

# Monolithic crystal filter

## MQF70.0-5000/13



### Application

- 6 pol filter
- i.f.- filter
- use in mobile and stationary transceivers

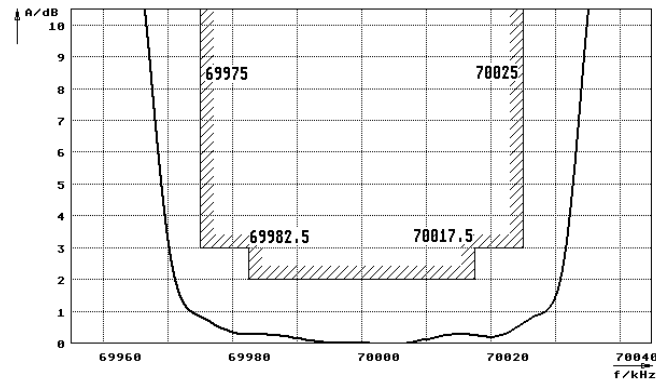
Limiting values		Unit	Value
Nominal frequency	$f_0$	MHz	70.0
Insertion loss		dB	< 5.0
Pass band at 3.0dB		kHz	$\pm > 25$
Ripple in pass band	$f_0 \pm 17.5$ kHz	dB	< 2.0
Stop band attenuation	$f_0 \pm 80$ kHz	dB	> 60
	$f_0 \pm 100$ kHz	dB	> 70
Alternate attenuation		dB	> 80 except spurious
Spurious response		dB	> 50 dB

Terminating impedance Z			
R1  C1		Ohm/pF	50    0
R2  C2		Ohm/pF	50    0

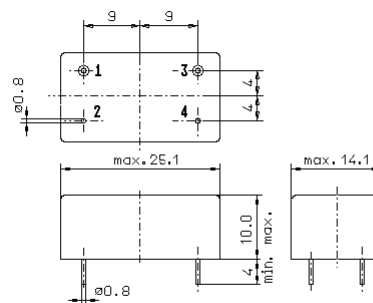
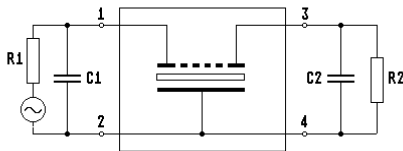
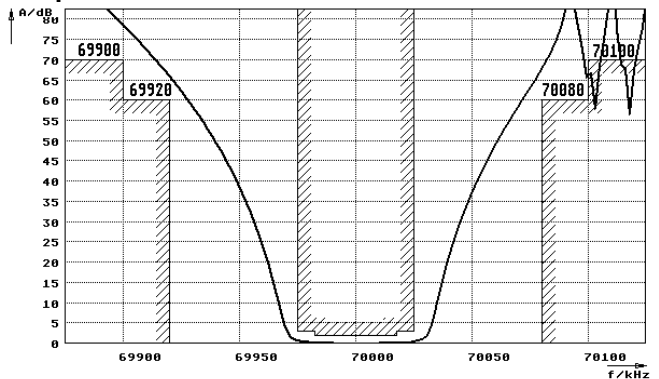
Operating temp. range	°C	-40... +85
Storage temp. range	°C	-45... +85
Environment conditions		according to CF001

### Characteristics MQF70.0-5000/13

#### Pass band



#### Stop band



GM3

- Pin connections:
- 1 Input
  - 2 Ground-Input
  - 3 Output
  - 4 Ground-Output