

HCWGMF

Three phase filters for wind mills applications

General Specifications

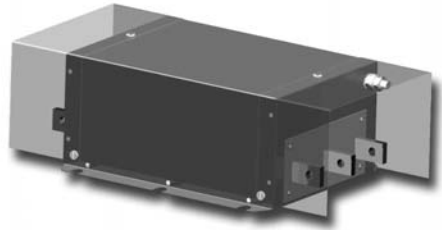
- Maximum operating voltage: 720 Vac
- Operating frequency: DC - 60Hz
- Hipot test voltage:
L/N->PE: 3100 Vdc 2s
L->N: 3000 Vdc 2s
- Flammability class: UL 94 V2

Three Phase Filters

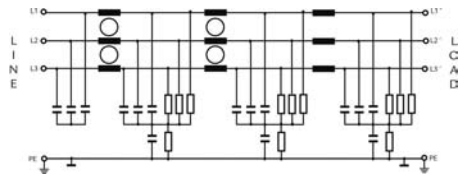
High-Power filters for rated currents up to 2500A
Attenuation loss for Class A compliance.
Protective cover for busbar optional
High voltage for IT networks

Applications

High power inverters, converters,
UPS and renewable
energy equipments



Electrical schematic



Product List

TYPE	Rated Current (A) @ 50 °c	Power (kW)	Leakage Current (mA)	Power Losses (W)	Connections Input/Output	Busbar Connections (mm)	Weight (Kg)	Housing
HCWGMF-150HV	150	110	<6	24	-28		6,5	65
HCWGMF-180HV	180	132	<6	34	-28		6,5	65
HCWGMF-250HV	250	200	<6	49	-28		7	66
HCWGMF-320HV	320	250	<6	19	-99	6 x 25	10,5	67
HCWGMF-400HV	400	315	<6	29	-99	6 x 25	10,5	67
HCWGMF-600HV	600	500	<6	44	-99	8 x 25	11	68
HCWGMF-800HV	800	630	<6	39	-99	8 x 40	18	69
HCWGMF-1000HV	1000	710	<6	60	-99	8 x 40	18	69
HCWGMF-1300HV	1300	1000	<6	100	-99	10 x 60	27	70
HCWGMF-1600HV	1600	1320	<6	131	-99	10 x 60	27	70
HCWGMF-2500HV	2500	2000	<6	300	-99	15 x 70	55	71

HCWMGF

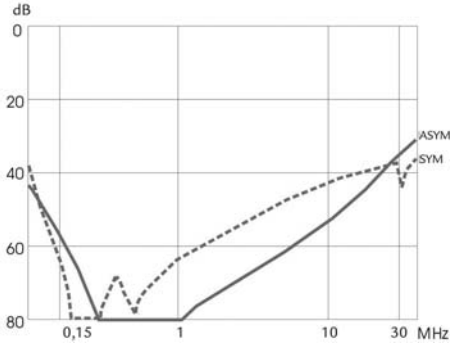
Three phase filters for wind mills applications

www.DataSheet4U.com

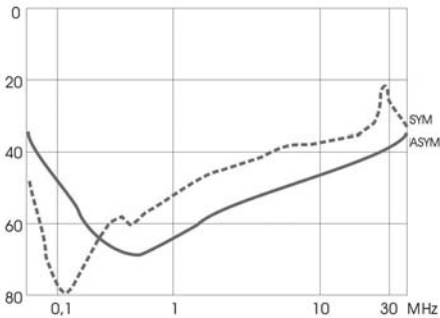
RFI Power Line Filters

Insertion Loss — ASYM
 - - - SYM

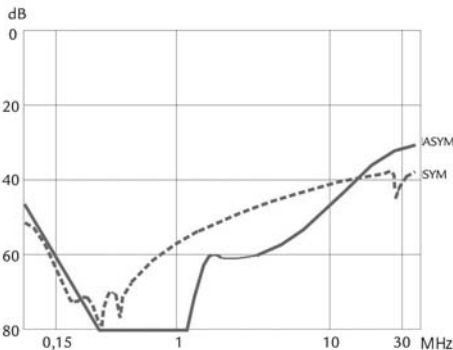
150-180A



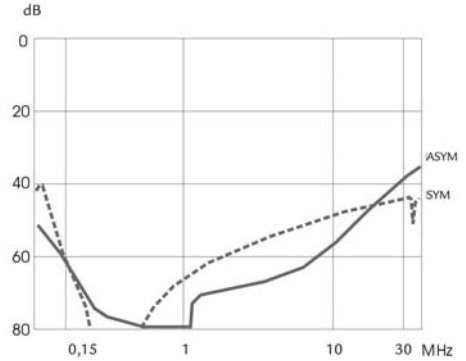
120A



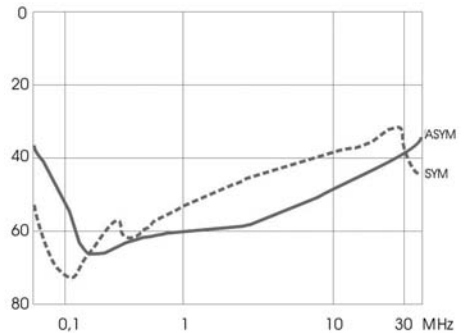
800-1000A



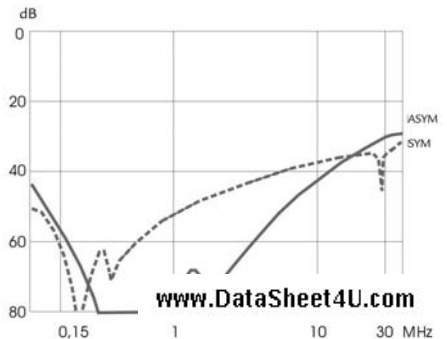
250-600A



160/200A



1600-2500A



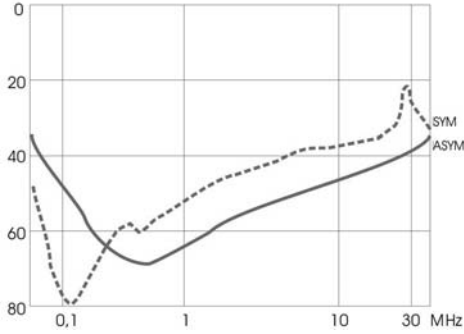
www.DataSheet4U.com

HCWMGF

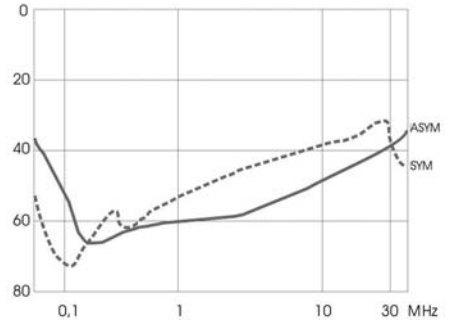
Three phase filters for wind mills applications

www.DataSheet4U.com

120A



160/200A



RFI Power Line Filters