

PLEASE CHECK WWW.MOLEX.COM FOR LATEST PART INFORMATION

Part Number: [0351430905](#)
Status: **Planned for Obsolescence**
Description: 2.00mm (.079") Dia Wire-to-Wire Housing, Plug, 9 Circuits

Documents:

[Drawing \(PDF\)](#) [RoHS Certificate of Compliance \(PDF\)](#)
[Product Specification PS-35141-001 \(PDF\)](#)

General

Product Family Crimp Housings
 Series [35143](#)
 Product Name N/A

Physical

Breakaway No
 Circuits (maximum) 9
 Gender Male
 Glow-Wire Compliant No
 Number of Rows 3
 Packaging Type Bag
 Panel Mount No
 Pitch - Mating Interface (in) 0.244 In
 Pitch - Mating Interface (mm) 6.20 mm
 Stackable No
 Temperature Range - Operating -25°C to +90°C

Material Info

Reference - Drawing Numbers

Product Specification PS-35141-001
 Sales Drawing SD-35143-090

EU RoHS

**ELV and RoHS
 Compliant**
**REACH SVHC
 Contains SVHC: No**
**Halogen-Free
 Status**
Not Reviewed

China RoHS



**Need more information on product
 environmental compliance?**

Email productcompliance@molex.com
 For a multiple part number RoHS Certificate of
 Compliance, [click here](#)

Please visit the [Contact Us](#) section for any
 non-product compliance questions.

Search Parts in this Series

[35143Series](#)

Mates With

[35141](#)

Use With

[35728-0201](#)

DO NOT SCALE DRAWING
DIMENSION IN METRIC

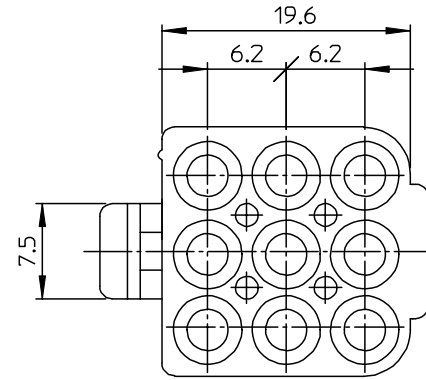
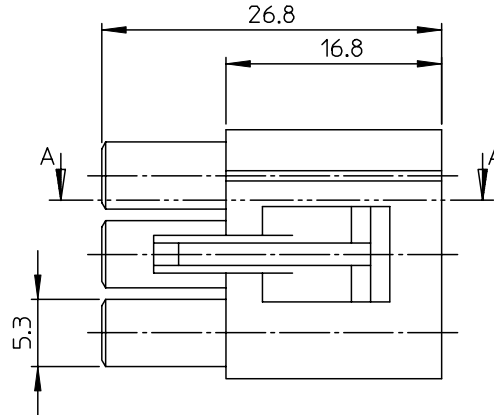
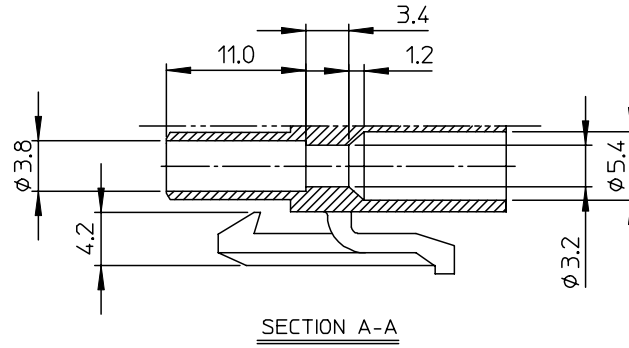
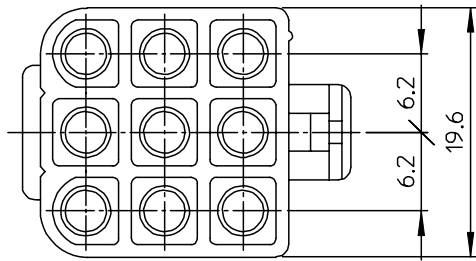
B

C

PROJECT NO.

SIMILAR ITEM

DWG. NO.
SD-35143-090



NOTES

1. MATERIAL : NYLON ,UL94V-2
 - 1) NATURAL COLOR : 35143-0901
 - 2) BLACK COLOR : 35143-0905
2. APPLICABLE TERMINAL : 35728-0201
3. MATING HOUSING : 35141-0901

NEW RELEASED ECN NO.KOR2003-0247 DRWN: C.B.CHIN CHK: W.Y.YANG APPR: C.W.LEE	QUALITY SYMBOLS MAJOR $\blacktriangledown = 0$ CRITICAL $\nabla C = 0$	GENERAL TOLERANCES: (UNLESS SPECIFIED)		SCALE 2.5:1	DESIGN UNITS <input checked="" type="checkbox"/> mm <input type="checkbox"/> INCH	THIRD ANGLE PROJECTION <input checked="" type="checkbox"/> <input type="checkbox"/>	DIMENSIONS: <input type="checkbox"/> mm <input type="checkbox"/> INCH <input checked="" type="checkbox"/> mm ONLY		SHT	REV
		4 PLACES	$\pm 0.$	$\pm -$	DRAWN BY & DATE C.B.CHIN 02/06/03		TITLE: \varnothing 2.0 PLUG HOUSING-9P			
		3 PLACES	$\pm 0.$	$\pm -$	CHECKED BY & DATE W.Y.YANG 02/06/03					
		2 PLACES	± 0.3	$\pm -$	APPROVED BY & DATE C.W.LEE 02/06/03		MOLEX INCORPORATED		SHEET NO. 1 OF 1	
1 PLACE	± 0.3	$\pm -$	ANGULAR: \pm °		CAD FILENAME S351430901MI	MATERIAL NO. SEE NOTES	DRAWING NO. SD-35143-090	KOREA		
A	REV	DRAFT WHERE APPLICABLE MUST REMAIN WITHIN DIMENSIONS		THIS DRAWING CONTAINS INFORMATION THAT IS PROPRIETARY TO MOLEX INCORPORATED AND SHOULD NOT BE USED WITHOUT WRITTEN PERMISSION.				SIZE B		

A

B

C

D

E

F

8 7 6 5 4 3 2 1

8 7 6 5 4 3 2 1 KOREA MX-A3