

PLEASE CHECK WWW.MOLEX.COM FOR LATEST PART INFORMATION

Part Number: [0395151006](#)
Status: **Active**
Description: 3.81mm (.150") Pitch Eurostyle™ Vertical PCB Header, with Threaded Retention Inserts, 6 Circuits

Documents:

[3D Model](#) [Product Specification PS-39500-001 \(PDF\)](#)
[Drawing \(PDF\)](#) [RoHS Certificate of Compliance \(PDF\)](#)

General

| | |
|-----------------------------|---------------------------|
| Product Family | Terminal Blocks |
| Series | 39515 |
| Application | Wire-to-Board |
| Component Type | PCB Header |
| Product Literature Order No | USA-355 |
| Product Name | ESE, Eurostyle™ Pluggable |
| Type | Euro Block |

Physical

| | |
|--------------------------------|-----------------|
| Circuits (Loaded) | 6 |
| Entry Angle | N/A |
| Lock to Mating Part | Yes |
| Number of Rows | 1 |
| Orientation | Vertical |
| PC Tail Length (in) | 0.138 In |
| PC Tail Length (mm) | 3.50 mm |
| PCB Thickness Recommended (in) | 0.098 In |
| PCB Thickness Recommended (mm) | 2.50 mm |
| Panel Mount | No |
| Pitch - Mating Interface (in) | 0.150 In |
| Pitch - Mating Interface (mm) | 3.81 mm |
| Polarized to Mating Part | Yes |
| Shrouded | Fully |
| Stackable | No |
| Temperature Range - Operating | -40°C to +105°C |
| Wire Size AWG | N/A |

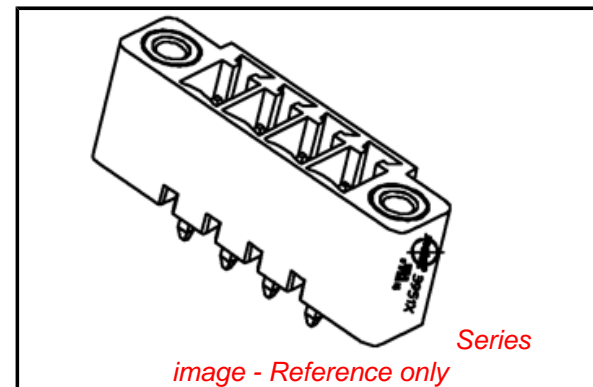
Electrical

| | |
|-------------------------------|------|
| Current - Maximum per Contact | 8A |
| Voltage - Maximum | 300V |

Material Info

Reference - Drawing Numbers

| | |
|-----------------------|----------------------------|
| Product Specification | PS-39500-001 |
| Sales Drawing | SD-39501-002, SD-39515-001 |



EU RoHS

ELV and RoHS Compliant
REACH SVHC
 Not Reviewed
Halogen-Free Status

China RoHS



Not Reviewed

Need more information on product environmental compliance?

Email productcompliance@molex.com
 For a multiple part number RoHS Certificate of Compliance, [click here](#)

Please visit the [Contact Us](#) section for any non-product compliance questions.

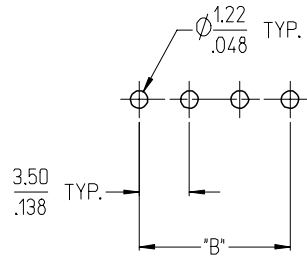
Search Parts in this Series

[39515Series](#)

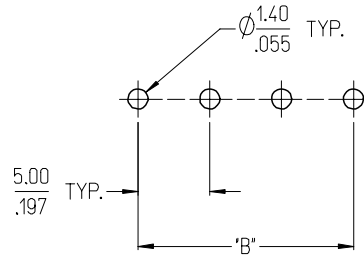
Mates With

Most 3.81mm (.150") Pitch Industry Standard Plugs, [39517](#) Vertical Plug with Retention Screws, [39514](#) Horizontal Plug with Retention Screws

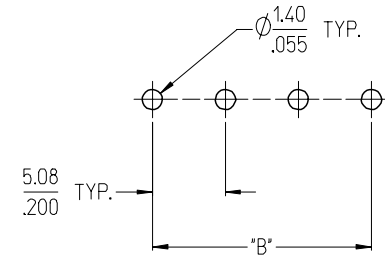
3950X SERIES
3.50mm HEADERS



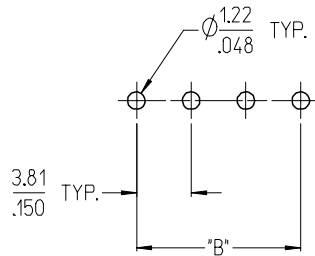
3952X & 3954X SERIES
5.00mm HEADERS
5.00mm 10 AMP FIXED



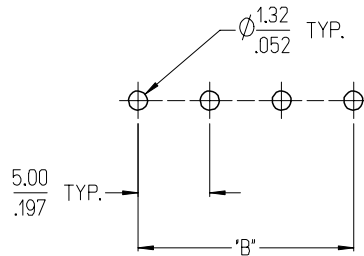
3953X SERIES
5.08mm HEADERS



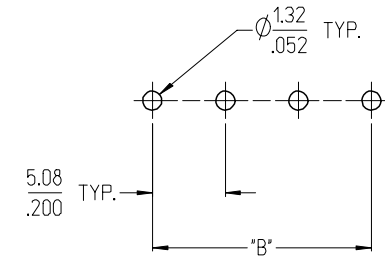
3951X SERIES
3.81mm HEADERS



3954X SERIES
5.00mm 15 AMP FIXED



3954X SERIES
5.08mm 15 AMP FIXED



NOTES:

- REFER TO INDIVIDUAL PRODUCT SALES DRAWINGS FOR "B" DIMENSION.
- DOES NOT APPLY TO DUAL LEVEL HEADERS, SERIES 39528 AND 39538.
- TYP. = TYPICAL.

INITIAL RELEASE
EC NO: ETC2007-0096
DRWN: CLYORK 2006/10/02
CHKD: JMACNEIL 2006/10/04
APPR: JMACNEIL 2006/10/04

| REV | DESCRIPTION |
|-----|-------------|
| A | |

| QUALITY SYMBOLS | |
|-----------------|-----|
| | = 0 |
| | = 0 |

| GENERAL TOLERANCES (UNLESS SPECIFIED) | | |
|---------------------------------------|--------|---------|
| | mm | INCH |
| 4 PLACES | ± .005 | ± .0005 |
| 3 PLACES | ± .005 | ± .0005 |
| 2 PLACES | ± 0.13 | ± .01 |
| 1 PLACE | ± 0.3 | ± .012 |
| ANGULAR ± 2 ° | | |

| DIMENSION STYLE | | SCALE | DESIGN UNITS | THIRD ANGLE PROJECTION |
|-----------------|--|--------------|---|------------------------|
| MM/IN | | 3:1 | INCH | |
| DRAWN BY | | DATE | TITLE | |
| C. YORK | | 2006/08/25 | RECOMMENDED PCB LAYOUT FOR ESE TERMINAL BLOCKS | |
| CHECKED BY | | DATE | MOLEX INCORPORATED | |
| J. MACNEIL | | 2006/08/25 | SD-39501-002 | |
| APPROVED BY | | DATE | SHEET NO. | |
| J. MACNEIL | | 2006/08/25 | 1 OF 1 | |
| MATERIAL NO. | | DOCUMENT NO. | THIS DRAWING CONTAINS INFORMATION THAT IS PROPRIETARY TO MOLEX INCORPORATED AND SHOULD NOT BE USED WITHOUT WRITTEN PERMISSION | |
| --- | | SD-39501-002 | | |

10 9 8 7 6 5 4 3 2 1

F

E

D

C

B

A

F

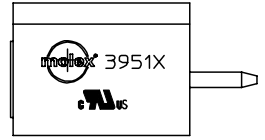
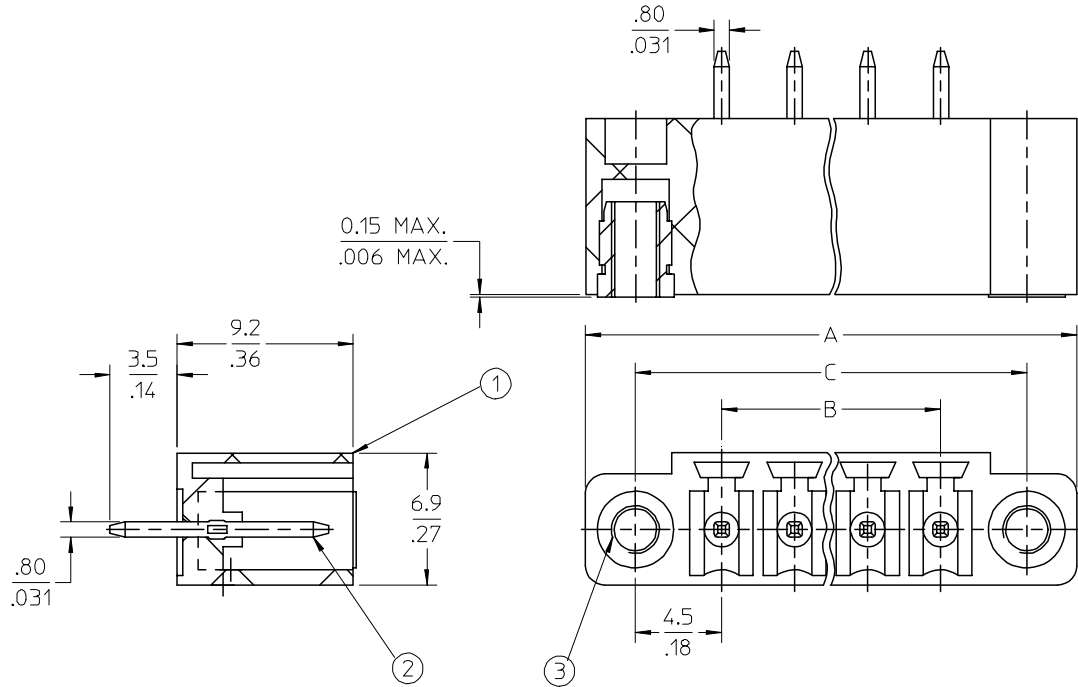
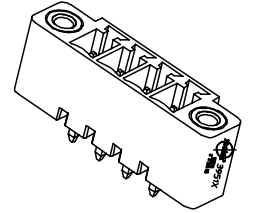
E

D

C

B

A



SPECIFICATIONS:

- 1. Material:
 - (1). Body: PA66
 - (2). Terminal: Brass
 - (3). Threaded Insert: Brass
- 2. Wire range: N/A
- 3. Electrical rating: 300V, 8A.
- 4. Max Torque: N/A.
- 5. Wire strip length: N/A.
- 6. Operating temperature: -40C to +105C.
- 7. $A = (N \times P) + 10.39MM$
- 8. $B = (N - 1) \times P$
- 9. $C = (B + 9.0MM)$
- 10. P (PITCH) = 3.81MM (150°).
- 11. N = Number of positions available 2 through 20.

| ENTER DESCRIPTION EC NO: NEO2006-0310 DRWNL: LROTHAUS 2006/01/09 CHKD: CYORK 2006/01/09 APPR: JPAMLICK 2006/01/10 DESCRIPTION | QUALITY SYMBOLS | GENERAL TOLERANCES (UNLESS SPECIFIED) | DIMENSION STYLE | SCALE | DESIGN UNITS | THIRD ANGLE PROJECTION | | | | | | | | | | | | | | | |
|--|---|--|---|--------------------|--------------|------------------------|-------|--------|----------|---------|-------|----------|--------|------|---------|-------|-------|-------|-----|------|--|
| | $\nabla=0$ $\nabla=0$ | <table border="1"> <thead> <tr> <th></th> <th>mm</th> <th>INCH</th> </tr> </thead> <tbody> <tr> <td>4 PLACES</td> <td>± ---</td> <td>±.0015</td> </tr> <tr> <td>3 PLACES</td> <td>± 0.038</td> <td>±.005</td> </tr> <tr> <td>2 PLACES</td> <td>± 0.13</td> <td>±.01</td> </tr> <tr> <td>1 PLACE</td> <td>± 0.3</td> <td>± ---</td> </tr> </tbody> </table> | | mm | INCH | 4 PLACES | ± --- | ±.0015 | 3 PLACES | ± 0.038 | ±.005 | 2 PLACES | ± 0.13 | ±.01 | 1 PLACE | ± 0.3 | ± --- | MM/IN | 4:1 | INCH | |
| | | mm | INCH | | | | | | | | | | | | | | | | | | |
| | 4 PLACES | ± --- | ±.0015 | | | | | | | | | | | | | | | | | | |
| 3 PLACES | ± 0.038 | ±.005 | | | | | | | | | | | | | | | | | | | |
| 2 PLACES | ± 0.13 | ±.01 | | | | | | | | | | | | | | | | | | | |
| 1 PLACE | ± 0.3 | ± --- | | | | | | | | | | | | | | | | | | | |
| | DRAWN BY: LROTHAUS DATE: 12/6/05 CHECKED BY: C. YORK DATE: 01/06/06 APPROVED BY: _____ DATE: _____ | TITLE | 3.81MM, EURO HEADER VERTICAL, MOUNTING ENDS | | | | | | | | | | | | | | | | | | |
| | DRAFT WHERE APPLICABLE MUST REMAIN WITHIN DIMENSIONS | MATERIAL NO. SEE CHART | DOCUMENT NO. SD-39515-001 | MOLEX INCORPORATED | | | | | | | | | | | | | | | | | |
| | | SIZE B | THIS DRAWING CONTAINS INFORMATION THAT IS PROPRIETARY TO MOLEX INCORPORATED AND SHOULD NOT BE USED WITHOUT WRITTEN PERMISSION | | | | | | | | | | | | | | | | | | |

9 8 7 6 5 4 3 2 1

| Description | Circuit size | Material Numbers | | | | | | | | | | | Dimensional Information | | | | | | |
|--|--------------|------------------|-----------|-----------|------------------|-----------|-----------|------------------|-----------|-----------|------------------|-----------|-------------------------|-------|-------|-------|-------|-------|-------|
| | | Black | | | | | | Green | | | | | | | | | | | |
| | | 100% Tin | | | 30 u" Gold | | | 100% Tin | | | 30 u" Gold | | | | | | | | |
| | | Printing Options | | | Printing Options | | | Printing Options | | | Printing Options | | Dim. A | | Dim B | | Dim C | | |
| None | 10AV | 11AV | None | 10AV | 11AV | None | 10AV | 11AV | None | 10AV | 11AV | mm | inch | mm | inch | mm | inch | | |
| 3.81mm, Euro Header, Vertical, Mounting ends | 2 | 395151002 | 395151302 | 395151402 | 395151502 | 395151802 | 395151902 | 395156002 | 395156302 | 395156402 | 395156502 | 395156802 | 395156902 | 18.01 | 0.709 | 3.81 | 0.150 | 12.81 | 0.504 |
| 3.81mm, Euro Header, Vertical, Mounting ends | 3 | 395151003 | 395151303 | 395151403 | 395151503 | 395151803 | 395151903 | 395156003 | 395156303 | 395156403 | 395156503 | 395156803 | 395156903 | 21.82 | 0.859 | 7.62 | 0.300 | 16.62 | 0.654 |
| 3.81mm, Euro Header, Vertical, Mounting ends | 4 | 395151004 | 395151304 | 395151404 | 395151504 | 395151804 | 395151904 | 395156004 | 395156304 | 395156404 | 395156504 | 395156804 | 395156904 | 25.63 | 1.009 | 11.43 | 0.450 | 20.43 | 0.804 |
| 3.81mm, Euro Header, Vertical, Mounting ends | 5 | 395151005 | 395151305 | 395151405 | 395151505 | 395151805 | 395151905 | 395156005 | 395156305 | 395156405 | 395156505 | 395156805 | 395156905 | 29.44 | 1.159 | 15.24 | 0.600 | 24.24 | 0.954 |
| 3.81mm, Euro Header, Vertical, Mounting ends | 6 | 395151006 | 395151306 | 395151406 | 395151506 | 395151806 | 395151906 | 395156006 | 395156306 | 395156406 | 395156506 | 395156806 | 395156906 | 33.25 | 1.309 | 19.05 | 0.750 | 28.05 | 1.104 |
| 3.81mm, Euro Header, Vertical, Mounting ends | 7 | 395151007 | 395151307 | 395151407 | 395151507 | 395151807 | 395151907 | 395156007 | 395156307 | 395156407 | 395156507 | 395156807 | 395156907 | 37.06 | 1.459 | 22.86 | 0.900 | 31.86 | 1.254 |
| 3.81mm, Euro Header, Vertical, Mounting ends | 8 | 395151008 | 395151308 | 395151408 | 395151508 | 395151808 | 395151908 | 395156008 | 395156308 | 395156408 | 395156508 | 395156808 | 395156908 | 40.87 | 1.609 | 26.67 | 1.050 | 35.67 | 1.404 |
| 3.81mm, Euro Header, Vertical, Mounting ends | 9 | 395151009 | 395151309 | 395151409 | 395151509 | 395151809 | 395151909 | 395156009 | 395156309 | 395156409 | 395156509 | 395156809 | 395156909 | 44.68 | 1.759 | 30.48 | 1.200 | 39.48 | 1.554 |
| 3.81mm, Euro Header, Vertical, Mounting ends | 10 | 395151010 | 395151310 | 395151410 | 395151510 | 395151810 | 395151910 | 395156010 | 395156310 | 395156410 | 395156510 | 395156810 | 395156910 | 48.49 | 1.909 | 34.29 | 1.350 | 43.29 | 1.704 |
| 3.81mm, Euro Header, Vertical, Mounting ends | 11 | 395151011 | 395151311 | 395151411 | 395151511 | 395151811 | 395151911 | 395156011 | 395156311 | 395156411 | 395156511 | 395156811 | 395156911 | 52.30 | 2.059 | 38.10 | 1.500 | 47.10 | 1.854 |
| 3.81mm, Euro Header, Vertical, Mounting ends | 12 | 395151012 | 395151312 | 395151412 | 395151512 | 395151812 | 395151912 | 395156012 | 395156312 | 395156412 | 395156512 | 395156812 | 395156912 | 56.11 | 2.209 | 41.91 | 1.650 | 50.91 | 2.004 |
| 3.81mm, Euro Header, Vertical, Mounting ends | 13 | 395151013 | 395151313 | 395151413 | 395151513 | 395151813 | 395151913 | 395156013 | 395156313 | 395156413 | 395156513 | 395156813 | 395156913 | 59.92 | 2.359 | 45.72 | 1.800 | 54.72 | 2.154 |
| 3.81mm, Euro Header, Vertical, Mounting ends | 14 | 395151014 | 395151314 | 395151414 | 395151514 | 395151814 | 395151914 | 395156014 | 395156314 | 395156414 | 395156514 | 395156814 | 395156914 | 63.73 | 2.509 | 49.53 | 1.950 | 58.53 | 2.304 |
| 3.81mm, Euro Header, Vertical, Mounting ends | 15 | 395151015 | 395151315 | 395151415 | 395151515 | 395151815 | 395151915 | 395156015 | 395156315 | 395156415 | 395156515 | 395156815 | 395156915 | 67.54 | 2.659 | 53.34 | 2.100 | 62.34 | 2.454 |
| 3.81mm, Euro Header, Vertical, Mounting ends | 16 | 395151016 | 395151316 | 395151416 | 395151516 | 395151816 | 395151916 | 395156016 | 395156316 | 395156416 | 395156516 | 395156816 | 395156916 | 71.35 | 2.809 | 57.15 | 2.250 | 66.15 | 2.604 |
| 3.81mm, Euro Header, Vertical, Mounting ends | 17 | 395151017 | 395151317 | 395151417 | 395151517 | 395151817 | 395151917 | 395156017 | 395156317 | 395156417 | 395156517 | 395156817 | 395156917 | 75.16 | 2.959 | 60.96 | 2.400 | 69.96 | 2.754 |
| 3.81mm, Euro Header, Vertical, Mounting ends | 18 | 395151018 | 395151318 | 395151418 | 395151518 | 395151818 | 395151918 | 395156018 | 395156318 | 395156418 | 395156518 | 395156818 | 395156918 | 78.97 | 3.109 | 64.77 | 2.550 | 73.77 | 2.904 |
| 3.81mm, Euro Header, Vertical, Mounting ends | 19 | 395151019 | 395151319 | 395151419 | 395151519 | 395151819 | 395151919 | 395156019 | 395156319 | 395156419 | 395156519 | 395156819 | 395156919 | 82.78 | 3.259 | 68.58 | 2.700 | 77.58 | 3.054 |
| 3.81mm, Euro Header, Vertical, Mounting ends | 20 | 395151020 | 395151320 | 395151420 | 395151520 | 395151820 | 395151920 | 395156020 | 395156320 | 395156420 | 395156520 | 395156820 | 395156920 | 86.59 | 3.409 | 72.39 | 2.850 | 81.39 | 3.204 |

| | | | | | | | | | | |
|---|-------------------------------|---|--|------------------|--|------------------|--------------|--|--|--|
| SEE SHEET 1 EC NO: NEC2006-0310 DRWNL: LROTHAUS 2006/01/09 CHKDC: CYORK 2006/01/09 APPR: J.P.A.M.L.I.C.K 2006/01/10 | QUALITY SYMBOLS ▽=0 ▽=0 | GENERAL TOLERANCES (UNLESS SPECIFIED) | | DIMENSION STYLE | | SCALE | DESIGN UNITS | THIRD ANGLE PROJECTION | | |
| | | | | MM/IN | | 4:1 | INCH | | | |
| | | | | DRAWN BY DATE | | CHECKED BY DATE | | TITLE 3.81MM, EURO HEADER VERTICAL, MOUNTING ENDS | | |
| | | | | LROTHAUS 12/6/05 | | C. YORK 01/06/06 | | | | |
| | | APPROVED BY DATE | | MATERIAL NO. | | DOCUMENT NO. | | | | |
| | | ANGULAR ± 2 ° | | SEE CHART | | SD-39515-001 | | | | |
| | | DRAFT WHERE APPLICABLE MUST REMAIN WITHIN DIMENSIONS | | SIZE B | | SHEET NO. 2 OF 2 | | | | |
| | | THIS DRAWING CONTAINS INFORMATION THAT IS PROPRIETARY TO MOLEX INCORPORATED AND SHOULD NOT BE USED WITHOUT WRITTEN PERMISSION | | | | | | | | |