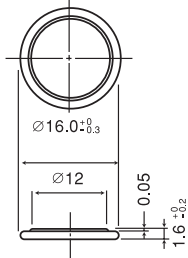


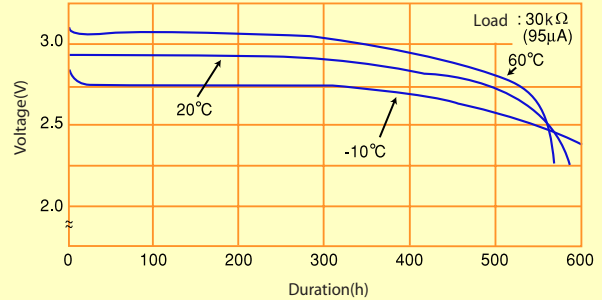
CR1616

Manganese Dioxide
Lithium Coin Batteries

Dimensions(mm)



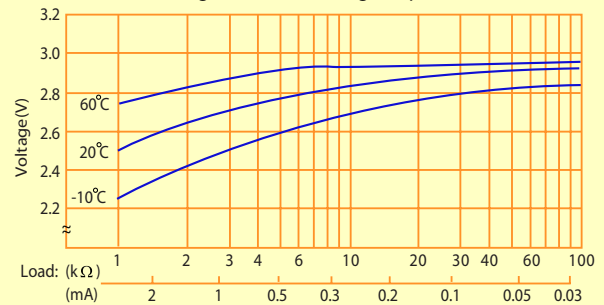
TEMPERATURE CHARACTERISTICS



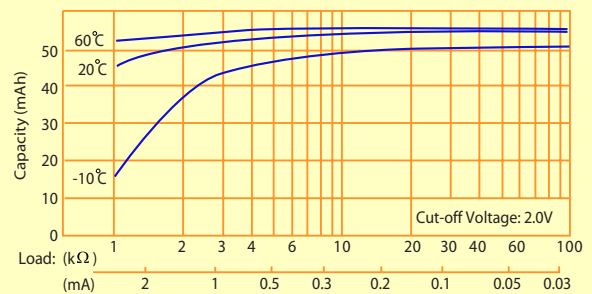
SPECIFICATION

Nominal voltage (V)	3
Nominal capacity (mAh)	50
Continuous standard load (mA)	0.1
Operating temperature (°C)	-20 ~ +60
Weight(g)	1.2

OPERATING VOLTAGE VS. LOAD RESISTANCE (voltage at 50% discharge depth)



CAPACITY VS. LOAD RESISTANCE



WARNING:

- Forbid short-circuit, charge between "+" and "-".
- Forbid over-discharge, fire, damage.
- Finish sealing less more 5 seconds at 200°C~250°C.
- Take out the battery when discharging to cut-off voltage, and embedding it under the ground or jump in the deep water.

EVE BATTERY CO., LTD.

Tel:+86-752-260 1898 +86-752-260 1128 Fax:+86-752-260 6033

<http://www.evebattery.com> Email:sales@evebattery.com

Latest version can be downloaded from EVE website