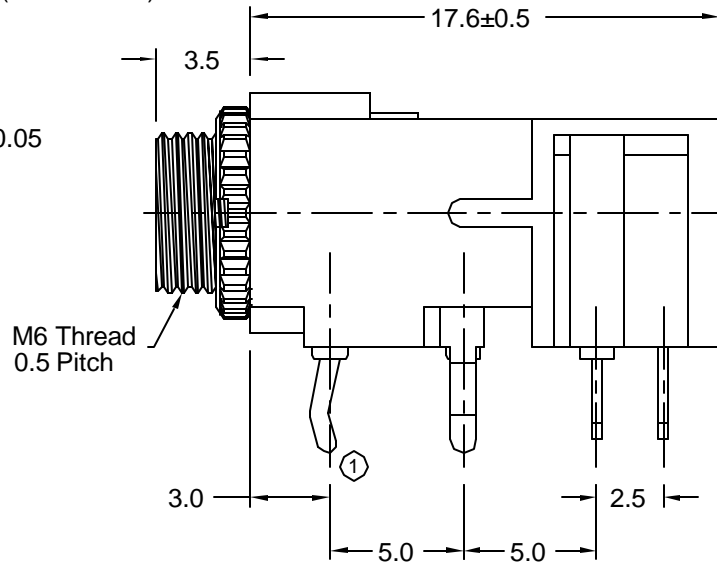
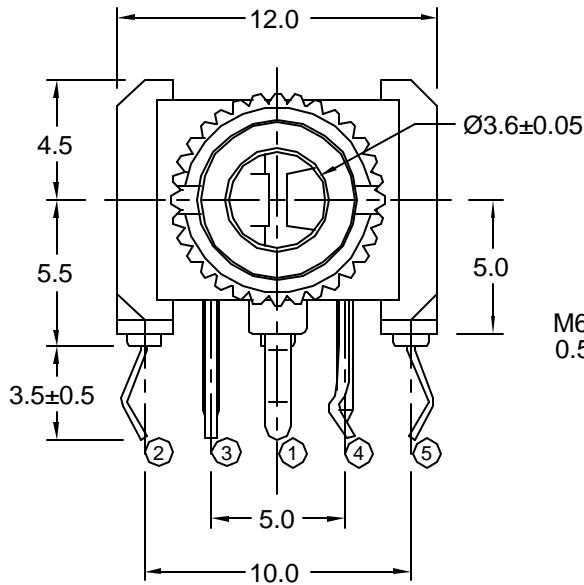
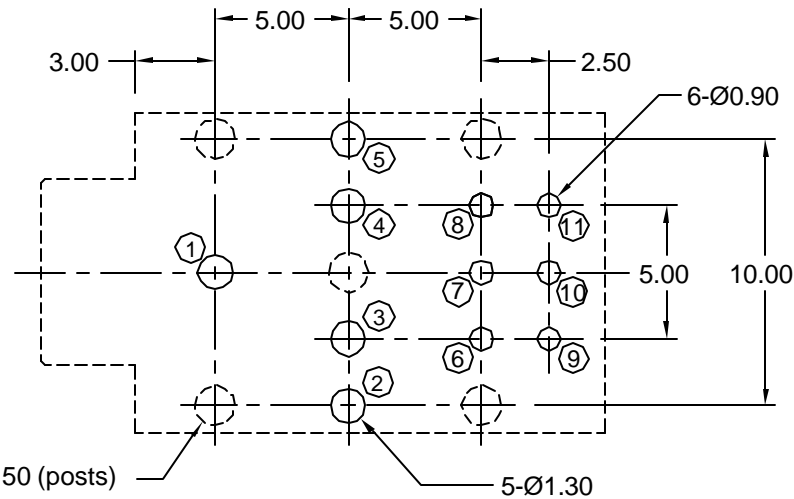
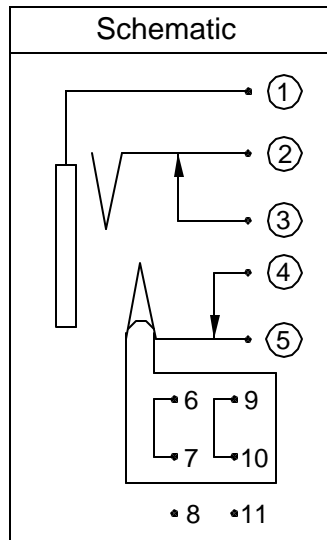


M6 Knurled Nut Included  
(not installed)



M6 Thread  
0.5 Pitch



Recommended PCB Layout  
(Bottom View)

**Material and Finish**

Housing: high temp. thermoplastic, black color, UL 94V-0 rated, reflow process compatible

Bushing: copper alloy, nickel plated

Sleeve: SPCC, nickel plated

Jack Terminals: copper alloy, tin plated over nickel underplating

Slide Switch Terminals: copper alloy, silver plated over nickel underplating

Recommended Reflow Temperature: 230°C for 30 seconds, 260°C maximum

**Mechanical Characteristics**

Insertion Force: 0.4kg - 3.0kg

Extraction Force: 0.3kg - 3.0kg

Durability: 5000 mating cycles

**Electrical Characteristics**

Contact Resistance: Before Test: 50 mohms max. After Durability Test: 100 mohms max.

Insulation Resistance: more than 100 Megohms at 500V DC

Dielectric Strength: 500V AC RMS for 1 minute

Operating Temperature: -25°C to +85°C

**RoHS COMPLIANT**  
EU Directive 2002/95/EC

Tolerances  
X.X ± 0.25  
X.XX ± 0.15  
Unless Stated Otherwise

REV.	DATE	DESCRIPTION	REV. BY	CHK. BY	DRAWN BY	DATE
A1	9/6/05	New Drawing	R. Aguirre	H. MA	R. Aguirre	07/11/05

**STX-3100-11C-HT**

3.5mm Audio Jack, Threaded Barrel, Reflow Compatible, RoHS Compliant

1 Double-Pole/Double-Throw Switch, 1 Double-Pole/Single-Throw Switch

