



# SAW Components

Data Sheet B3802





## SAW Components

B3802

## Low-Loss Filter

110,0 MHz

## Data Sheet

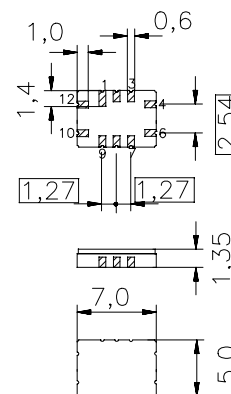
## Ceramic package QCC12B

## Features

- Low-loss IF filter
- Package for Surface Mounted Technology (SMT)
- Hermetically sealed ceramic package
- Balanced or unbalanced operation

## Terminals

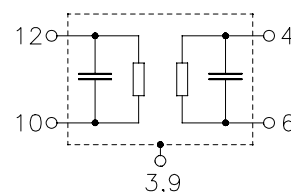
- Gold-plated



Dimensions in mm, approx. weight 0,2 g

## Pin configuration

12	Input
10	Input or input ground
4	Output
6	Output or output ground
1, 2, 7, 8	Ground
3, 9	Case ground



Type	Ordering code	Marking and Package according to	Packing according to
B3802	B39111-B3802-Z910	C61157-A7-A56	F61064-V8070-Z000

Electrostatic Sensitive Device (ESD)

## Maximum ratings

Operable temperature range	$T$	- 40/+ 85	°C	
Storage temperature range	$T_{stg}$	- 40/+ 85	°C	
DC voltage	$V_{DC}$	0	V	
Source power	$P_s$	10	dBm	



## SAW Components

B3802

## Low-Loss Filter

110,0 MHz

## Data Sheet

## Characteristics

Operating temperature:

 $T = 25\text{ °C}$ 

Terminating source impedance:

 $Z_S = 50\ \Omega$  and matching network

Terminating load impedance:

 $Z_L = 50\ \Omega$  and matching network

		min.	typ.	max.		
<b>Center frequency</b>	$f_C$	109,9	110,0	110,1	MHz	
<b>Minimum insertion attenuation</b>	$\alpha_{\min}$	—	6,8	10,0	dB	
<b>Pass bandwidth</b>	$\alpha_{\text{rel}} \leq 3,0\text{ dB}$	$B_{3\text{dB}}$	3,75	4,0	—	MHz
	$\alpha_{\text{rel}} \leq 1,0\text{ dB}$	$B_{1\text{dB}}$	—	3,1	—	MHz
<b>Amplitude ripple</b> (max peak to adjacent valley)	$\Delta\alpha$					
	$f_C \pm 1,6\text{ MHz}$	—	0,5	—	dB	
<b>Group delay ripple</b>	$\Delta\tau$					
	$f_C \pm 1,6\text{ MHz}$	—	45	80	ns	
<b>Relative attenuation</b> (relative to $\alpha_{\min}$ )	$\alpha_{\text{rel}}$					
	60,0 MHz ... 100,0 MHz	40	42	—	dB	
	100,0 MHz ... 105,5 MHz	36	41	—	dB	
	114,5 MHz ... 120,0 MHz	36	41	—	dB	
	120,0 MHz ... 160,0 MHz	38	43	—	dB	
<b>Temperature coefficient of frequency</b>	$TC_f$	—	-18	—	ppm/K	



## SAW Components

B3802

## Low-Loss Filter

110,0 MHz

## Data Sheet

## Characteristics

Operating temperature:

$$T = -10 \dots 70 \text{ } ^\circ\text{C}$$

Terminating source impedance:

$$Z_S = 50 \text{ } \Omega \text{ and matching network}$$

Terminating load impedance:

$$Z_L = 50 \text{ } \Omega \text{ and matching network}$$

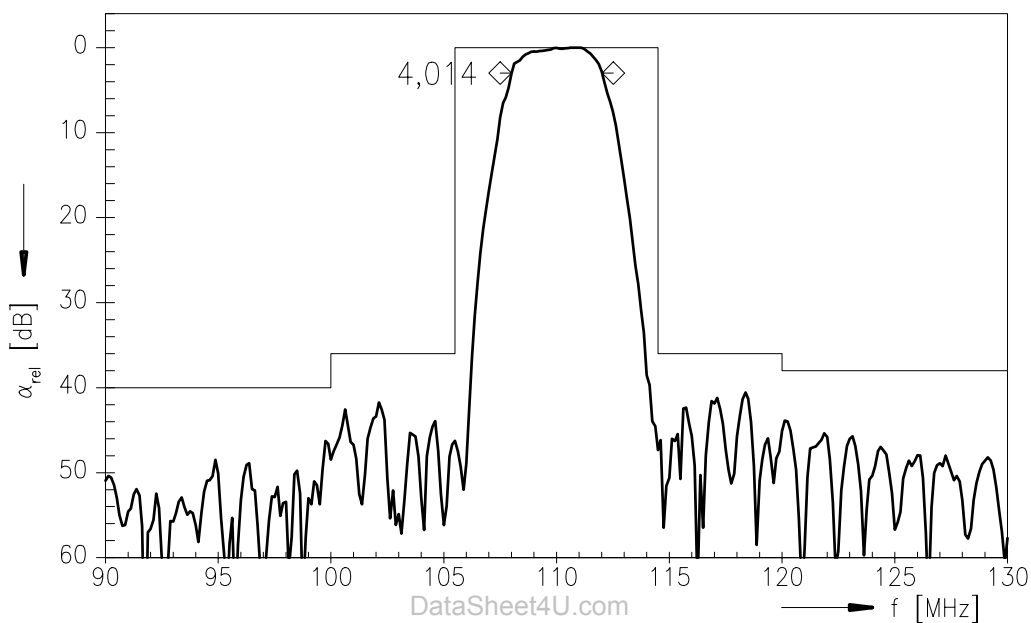
		min.	typ.	max.	
<b>Center frequency</b>	$f_C$	109,8	110,0	110,18	MHz
<b>Minimum insertion attenuation</b>	$\alpha_{\min}$	—	6,8	10,0	dB
<b>Pass bandwidth</b>	$\alpha_{\text{rel}} \leq 3,0 \text{ dB}$	$B_{3\text{dB}}$	3,75	4,0	—
	$\alpha_{\text{rel}} \leq 1,0 \text{ dB}$	$B_{1\text{dB}}$	—	3,1	—
<b>Amplitude ripple</b> (max peak to adjacent valley)	$\Delta\alpha$				
	$f_C \pm 1,6 \text{ MHz}$	—	0,5	—	dB
<b>Group delay ripple</b>	$\Delta\tau$				
	$f_C \pm 1,6 \text{ MHz}$	—	45	80	ns
<b>Relative attenuation</b> (relative to $\alpha_{\min}$ )	$\alpha_{\text{rel}}$				
	60,0 MHz ... 100,0 MHz	40	42	—	dB
	100,0 MHz ... 105,5 MHz	36	41	—	dB
	114,5 MHz ... 120,0 MHz	36	41	—	dB
120,0 MHz ... 160,0 MHz	38	43	—	dB	
<b>Temperature coefficient of frequency</b>	$TC_f$	—	-18	—	ppm/K



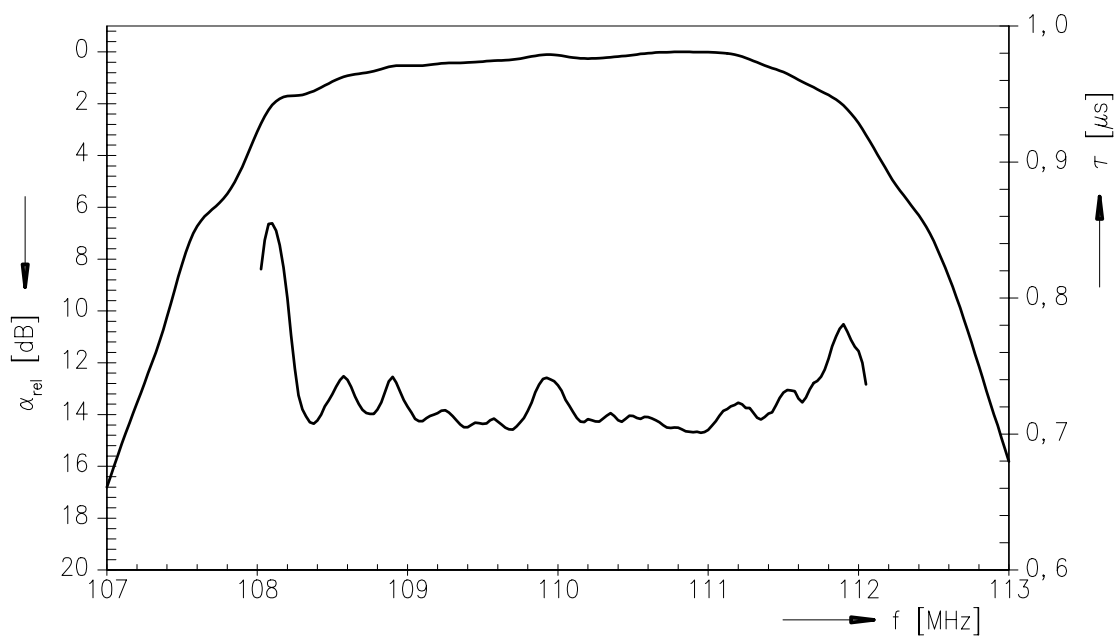
<b>SAW Components</b>	<b>B3802</b>
<b>Low-Loss Filter</b>	<b>110,0 MHz</b>

**Data Sheet**

**Normalized frequency response**



**Normalized frequency response (pass band)**





SAW Components

B3802

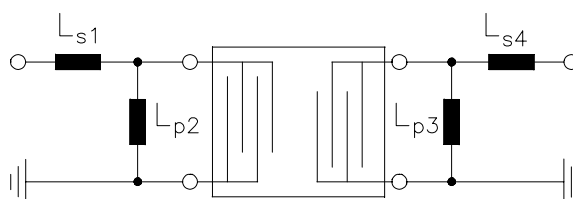
Low-Loss Filter

110,0 MHz

Data Sheet

**Matching network** (element values may depend on pcb layout)

**50  $\Omega$  unbalanced:**



$$L_{s1} = 82 \text{ nH}$$

$$L_{p2} = 47 \text{ nH}$$

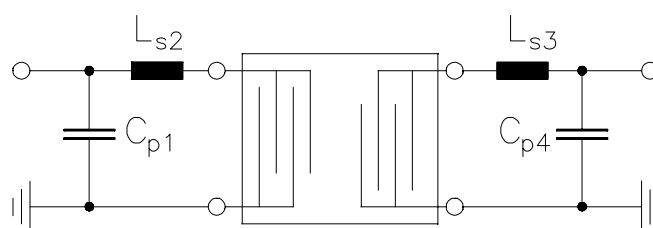
$$L_{p3} = 33 \text{ nH}$$

$$L_{s4} = 12 \text{ nH}$$

DataSheet4U.com

DataShee

**50  $\Omega$  unbalanced :** (higher IL, but more attenuation in the upper stopband)



$$C_{p1} = 100 \text{ nF}$$

$$L_{s2} = 56 \text{ nH}$$

$$L_{s3} = 56 \text{ nH}$$

$$C_{p4} = 68 \text{ nF}$$



<b>SAW Components</b>	<b>B3802</b>
<b>Low-Loss Filter</b>	<b>110,0 MHz</b>

Data Sheet

et4U.com

DataSheet4U.com

**Published by EPCOS AG**  
**Surface Acoustic Wave Components Division, SAW MC IS PD WL**  
**P.O. Box 80 17 09, D-81617 München**

© EPCOS AG 2001. All Rights Reserved.

As far as patents or other rights of third parties are concerned, liability is only assumed for components per se, not for applications, processes and circuits implemented within components or assemblies.

The information describes the type of component and shall not be considered as assured characteristics.

Terms of delivery and rights to change design reserved.

For questions on technology, prices and delivery please contact the sales offices of EPCOS AG or the international representatives.

Due to technical requirements components may contain dangerous substances. For information on the type in question please also contact one of our sales offices.