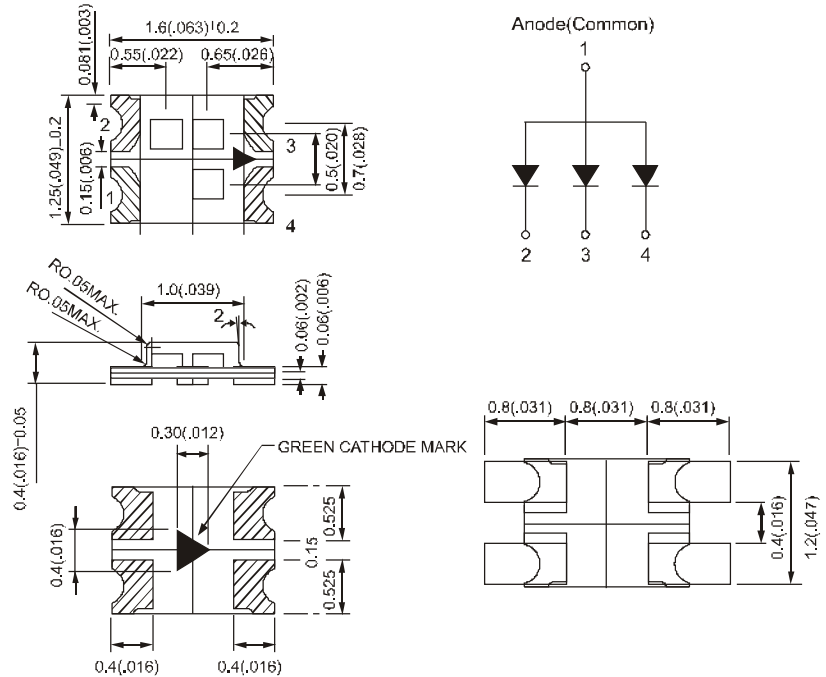




SURFACE MOUNT TRI COLOR LED LAMPS



BL-Hxxxxxxx6T Series



■ Absolute Maximum Ratings
(Ta=25°C)

	UNIT	SPEC.
IF	mA	30
IFp	mA	100
VR	V	5
Topr	°C	-25 ~ +80
Tstg	°C	-20 ~ +85

NOTE:
 1. All dimensions are in millimeters (inches).
 2. Tolerance is $\pm 0.10(.004)$ unless otherwise specified.
 3. Specifications are subject to change without notice.

Part No.	Chip				Lens Appearance	Electro-optical Data (At 20mA)				Viewing Angle 2θ 1/2 (deg)
	Material	Emitted Color	λp (nm)	λd (nm)		Vf (V)		Iv (mcd)		
						Typ.	Max.	Min.	Typ.	
BL-HJEGKBE36T	AlGaInP	Super Orange Red	630	620	Water Clear	1.8	2.4	1.23	25.0	120°
	AlGaInP	Green	525	525		2.8	3.2	18.5	40.0	
	AlInGaN	Super Blue	460	465		3.2	3.6	12.3	20.0	
BL-HJCGKBE36T	AlGaInP	Super Amber	610	605		1.8	2.4	18.5	25.0	
	INGaN	Green	525	525		2.8	3.2	18.5	40.0	
	AlInGaN	Super Blue	460	465		3.2	3.6	12.3	20.0	
BL-HJCGEB336T	AlGaInP	Super Amber	610	605		1.8	2.4	18.5	25.0	
	AlGaInP	Super Yellow Green	570	570		1.8	2.4	5.5	10.0	
	AlInGaN	Super Blue	460	465-470		2.8	3.2	8.2	15.0	
BL-HKCGEBE36T	AlGaInP	Super Yellow	590	589	1.8	2.4	12.3	30.0		
	AlGaInP	Super Yellow Green	570	570	1.8	2.4	5.5	10.0		
	AlInGaN	Super Blue	460	465	3.2	3.6	12.3	20.0		
BL-HUBGE36T	AlGaInP	Super Red	645	632	1.8	2.4	5.5	15.0		
	AlGaInP	Super Yellow Green	570	570	1.8	2.4	5.5	10.0		
	AlInGaN	Super Blue	460	465	3.2	3.6	12.3	20.0		