

Crystal filter

QF21.4-20000/06



Application

- 4 pol filter
- i.f.- filter
- use in mobile and stationary transceivers

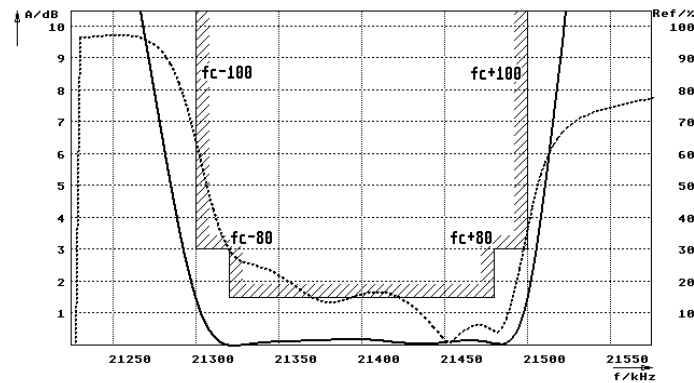
Limiting values		Unit	Value
Nominal frequency	f_0	MHz	21.4
Centre frequency	f_c	MHz	21.4 ± 7.5 kHz
Insertion loss		dB	< 8.0
Pass band at 3.0dB		kHz	$\pm > 100$
Ripple in pass band	$f_c \pm 80$ kHz	dB	< 1.5
Stop band attenuation	$f_c \pm 400$ kHz	dB	> 60 except spurious
Alternate attenuation	$f_0 \pm 2.5...5$ MHz	dB	> 90 except spurious
Spurious response		dB	> 55
Return loss	$f_0 \pm 80$ kHz	dB	> 9
IP3 (input)	$f_0 \pm 200; f_0 \pm 400$ kHz	Bm	> 30

Terminating impedance Z			
R1 C1		Ohm/pF	50 0
R2 C2		Ohm/pF	50 0

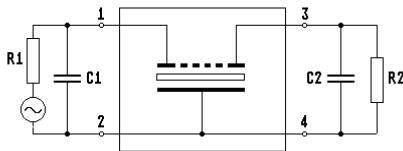
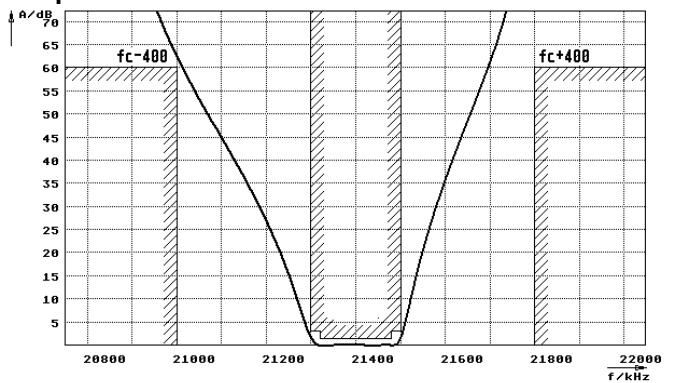
Operating temp. range	°C	-10... +70
-----------------------	----	------------

Characteristics QF21.4-20000/06

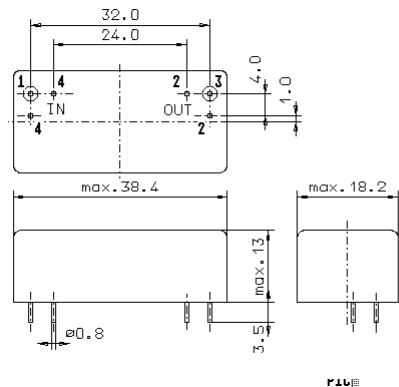
Pass band



Stop band



- Pin connections:
- 1 Input
 - 2 Ground-Input
 - 3 Output
 - 4 Ground-Output



GM17.1