

# Monolithic crystal filter

## MQF10.7-0240/07



### Application

- 8 pol filter
- i.f.- filter
- use in mobile and stationary transceivers

### Limiting values

		Unit	Value
Center frequency	$f_0$	MHz	10.7
Insertion loss		dB	$\leq 5.0$
Pass band at 3.0 dB		kHz	$\pm 1.20$
Ripple in pass band	$f_0 \pm 0.90$ kHz	dB	$\leq 2.0$
Stop band attenuation	$f_0 \pm 5$ kHz	dB	$\geq 70$
Alternate attenuation	$f_0 \pm 200 \dots 1000$ kHz	dB	$> 80$

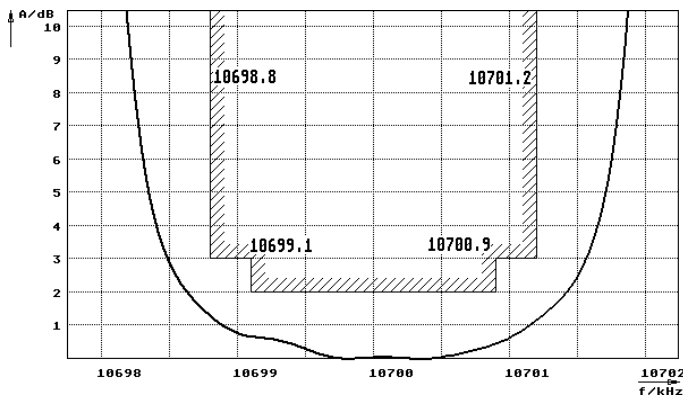
### Terminating impedance Z

R1    C1	Ohm/pF	50    0
R2    C2	Ohm/pF	50    0

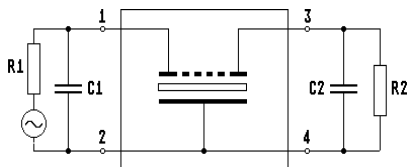
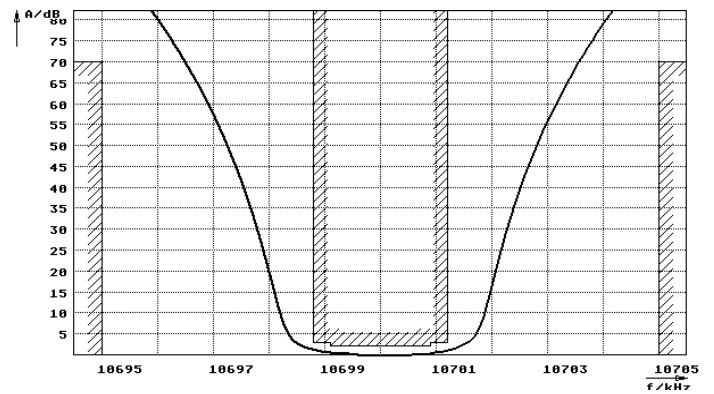
Operating temp. range	$^{\circ}\text{C}$	-20... +70
-----------------------	--------------------	------------

### Characteristics MQF10.7-0240/07

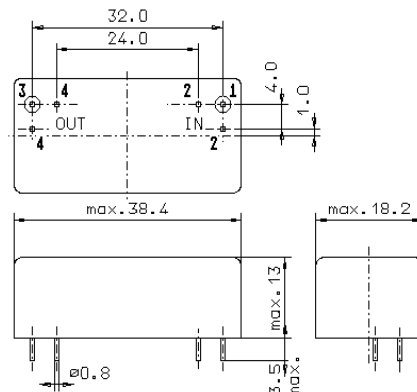
#### Pass band



#### Stop band



Pin connections: 1 Input  
2 Input-E  
3 Output  
4 Output-E



GM17