

## Specifications

Insulation Resistance:	1,000MΩ min. at 500V DC
Dielectric Withstanding Voltage:	700V AC for 1 minute
Contact Resistance:	30mΩ max. at 10mA/20mV max.
Current Rating:	1A max.
Operating Temperature Range:	-40°C to +170°C (-40°C to +150°C for -004 type)
Mating Cycles:	10,000 insertions min.
Contact Force:	20g min. per pin at minimum displacement of 0.3mm 80g max. per pin at maximum displacement of 0.7mm

## Materials and Finish

Housing: Polyetherimide (PEI), glass-filled  
 Contacts: Beryllium Copper (BeCu)  
 Plating: Gold over Nickel

## Part Number (Details)

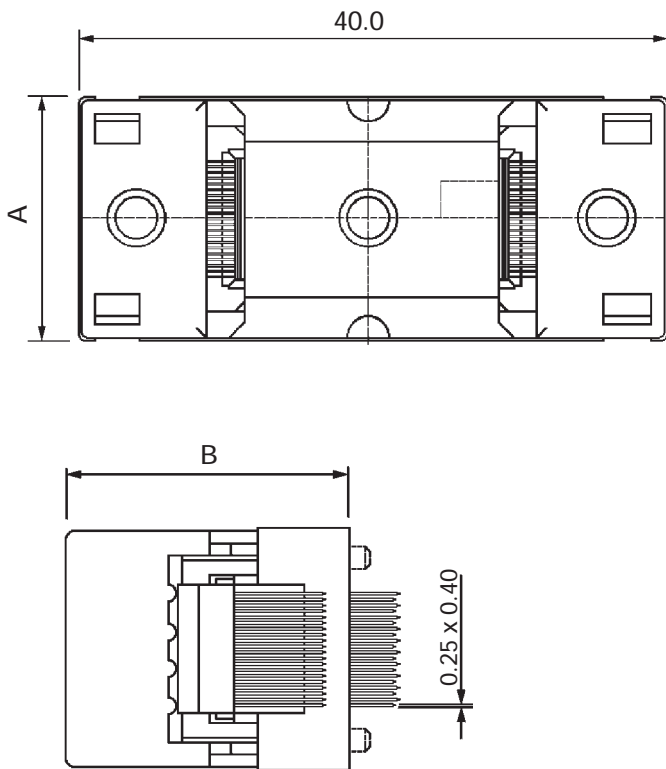
**IC191 - 032 2 - 001 x - x**

Series No.	IC191
No. of Contact Pins	032
Number of Sides with Contacts	2
Design Number	001
Posi	x - x
N = Without Positioning Pin Unmarked = With Positioning Pin	
K = With Protection Key Unmarked = Without Protection Key	

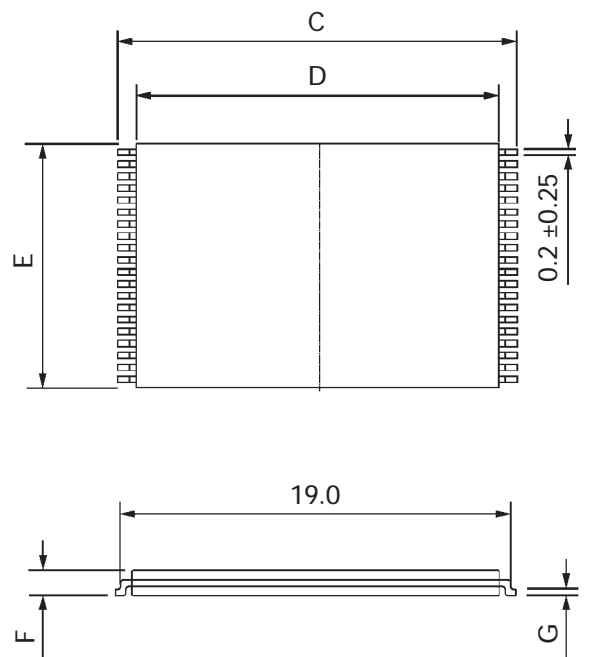
\*Protection Key: Prevents IC from releasing during transportation

## Applicable Socket and IC Dimensions (Reference Only)

Outline Socket Dimensions



Outline IC Dimensions



Part Number	Pin Count	Pitch	Socket Dim.		IC Dimensions				
			A	B	C	D	E	F	G
IC191-0322-001 x-x	32	0.5	16.0	19.0	19.8 ~ 20.2	18.3 ~ 18.5	8.2 max.	1.27	0.15
IC191-0402-002 x-x	40	0.5	18.0	19.0	19.8 ~ 20.2	18.3 ~ 18.5	10.2 max.	1.27	0.125
IC191-0482-004 x-x	48	0.5	20.0	19.2	19.9 ~ 20.1	18.35 ~ 18.45	12.3 max.	1.20 max.	0.157

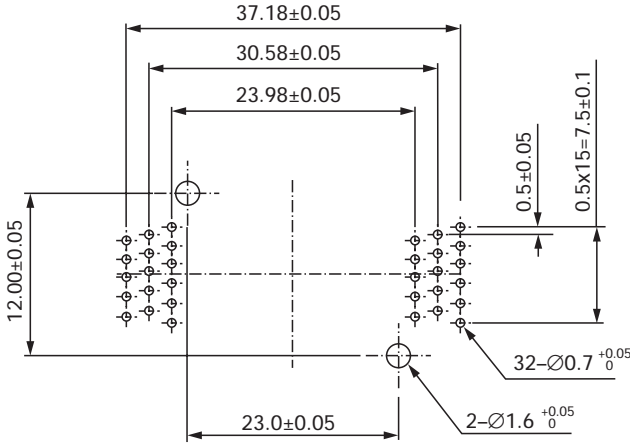
# IC191 - Open Top (Type I)

# Thin Small Outline Package (TSOP)

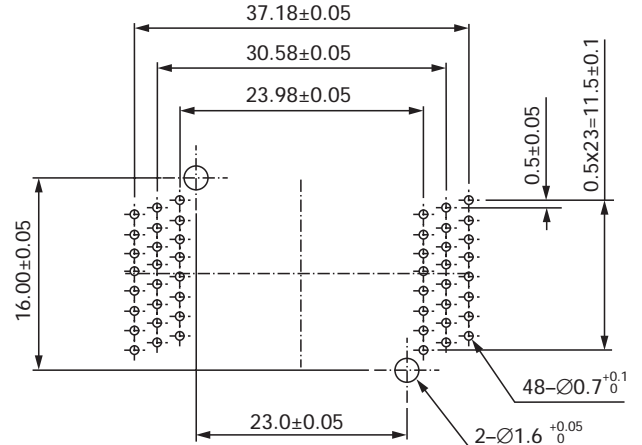
## Recommended PCB Layouts

Top view from socket

### TSOP IC191-0322-001 (32 Pins)



### TSOP IC191-0482-004 (48 Pins)



### TSOP IC191-0402-002 (40 Pins)

