

RJ-45

1000 Base-TX  
4 Ports with LED

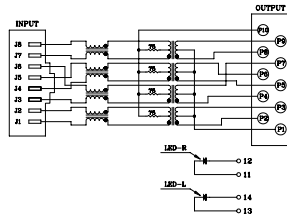
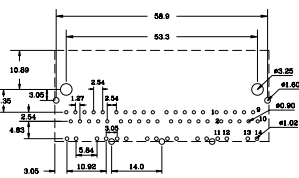
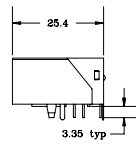
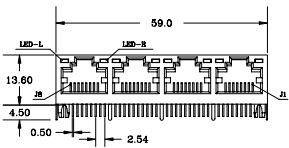
8328



- RJ-45 connector integrated with XFMR impedance resistor/high voltage capacitor
- Meets IEEE 802.3 and ANSI X3.263 requirements including 350µH OCL with 8mA DC bias
- Reduced EMI radiation and improved EMI performance
- Contacting Plating: 6u-inch gold flashed



Mechanical and Schematic (All dimensions in millimetres)



PCB LAYOUT - component side view

SCHEMATIC

ELECTRICAL SPECIFICATION @ 25 °C

Turns Ratio (±3%)	DCR (ΩMAX)	Inductance <sup>1</sup> (µH MIN)	L <sub>2</sub> <sup>2</sup> (µH MAX)	Return Loss (dB MIN)	Insertion Loss (dB TYP)	Crosstalk (dB TYP)	CCMA (dB TYP)	Hipot <sup>3</sup> (VAC)	
(P3-P2)/(J2-J1) (P7-P4)/(J6-J3) (P6-P5)/(J5-J4) (P9-P8)/(J8-J7)	(J6-J3)= (J1-J2)= (J4-J5)= (J7-J8)=	(P3-P2)/(P7-P4) (P6-P5)/(P9-P8)	(P3-P2), short J2-J1 (P7-P4), short J6-J3 (P6-P5), short J5-J4 (P9-P8), short J8-J7	1-30 30-80	0.1-100 MHz	1-100MHz	1-100MHz	(J1-J2) to (P2-P3) (J5-J4) to (P6-P5) (J3-J6) to (P7-P4) (J8-J7) to (P9-P8)	
1CT:1CT	1.2	350	0.3	-18	-12	-1.1	-30.0	-35.0	1500

1. Inductance @ 0.01V, 100kHz, 8mA DC Bias  
2. Leakage Inductance @ 1MHz  
3. Hipot @ 1.0mA, 1sec