

Electrical / Environmental

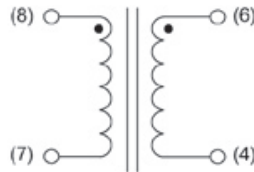
HM33



Current Sense Surface Mount Transformers

- Insulation Resistance, Minimum 10 MΩ
- Operating Temperature Range -25°C to + 105°C
- Insulation System Class B, 130°C

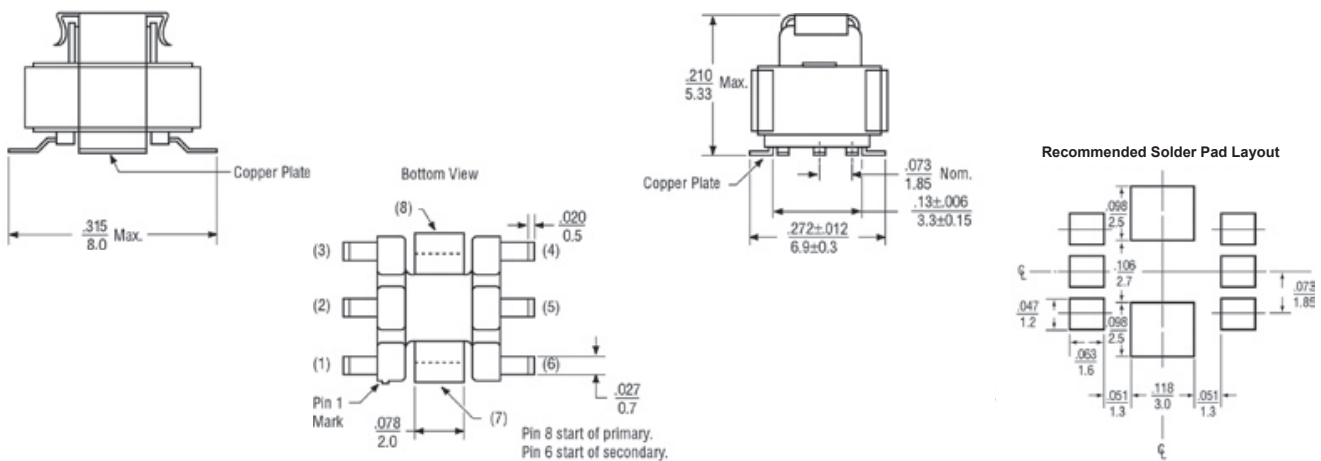
Schematic



Specifications @ 25°C

Part Number	Turns NI:N2 @ 10 kHz	Secondary Inductance μH Min.	Secondary DC Resistance Ω Max.	Primary Amps Max.	Color Code
HM33-10125	1:125	3000	7.36	6	White
HM33-10100	1:100	2000	5.50	6	Black
HM33-10070	1:70	980	4.75	6	Yellow
HM33-10050	1:50	500	2.50	6	Green
HM33-10040	1:40	320	1.35	6	Blue
HM33-10030	1:30	180	1.00	6	Red

Outline Dimensions (Inch/mm)



Ordering Information

