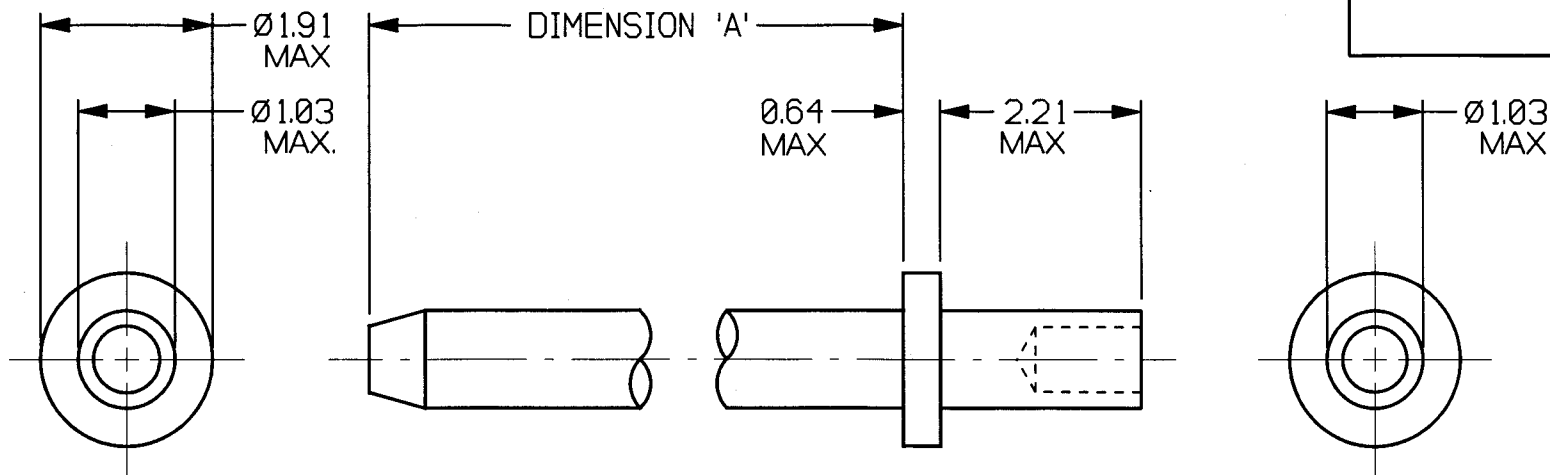


CUSTOMER INFORMATION
SHEET

www.DataSheet4u.com



HARWIN PART No.	DIMENSION 'A' (MAX)
H2170-XX	12.83
H2171-XX	19.18
H2172-XX	25.53
H2173-XX	7.75
H2174-XX	3.94
H2176-XX	9.15
H2177-XX	6.61
H2179-XX	7.72

NOTE:

1. PLATING FINISHES AVAILABLE:

 $\varnothing 1$ = TIN $\varnothing 5$ = GOLD2. RECOMMENDED MOUNTING HOLE: $\varnothing 1.04/\varnothing 1.14$

3. RECOMMENDED PANEL THICKNESS: 1.6mm

4. FOR SWAGING TOOL CHANGE PART No.

TO PREFIX 'Z' AND SUFFIX '00'

(EXAMPLE Z2174-00)

1	6.195	
ISS.	DATE	C/N
DRAWN: I.SANDY		
CHECKED: <i>[Signature]</i>		
APPD.: <i>[Signature]</i>		
CUSTOMER REF.		
ASSEMBLY DRG:		

HARWIN

TOLERANCES

X.	± 1 mm
X.X	± 0.25 mm
X.XX	± 0.10 mm
X.XXX	± 0.01 mm
ANGLES	$\pm 1^\circ$

MATERIAL:
BRASS

TITLE:

TERMINAL PIN

HARWIN PLC
UKTEL: (01705) 370451
FAX: (01705) 324010HARWIN INC
U.S.A.TEL: (812) 285-0055
FAX: (812) 285-0056HARWIN PTE
SINGAPORETEL: 7794909
FAX: 7793868

IF IN DOUBT - ASK

FINISH: SEE NOTE 1

S/AREA:

mm²

DRAWING NUMBER:

H217X-XX

SHT.
2
OF
2