

1.0 GENERAL

RCPW (Remote Configuration Package for Windows) runs on a PC and communicates via an interface adaptor to enable re-programming and interrogation of the transmitter.

2.0 UNPACKING

Please check carefully for any signs of shipping damage. The packaging has been designed to afford maximum protection, however, we cannot guarantee that mishandling will not cause damage. In the case of this unlikely event, please contact your supplier immediately for a Returns number and we will send a form to be completed and returned with the instrument. Please retain the packaging for subsequent inspection.

- Check that the power supply is the correct voltage for your country.

3.0 CONFIGURATION

A programming kit package is available containing all the accessories to facilitate programming the transmitter straight away. The full contents are as follows:

- The configurator for connection between the PC and the mA-signal of the transmitter
- Power supply unit with output 24 V DC, 150 mA for connection to mains
- RCPW Installation disk
- Instructions (this document)
- Transmitter to configurator connection cable

3.1 PC Installation of RCPW

Minimum PC operating system: Windows™ 3.1

Minimum PC requirement: IBM® compatible 386 or above with 4mb RAM and available serial port

Insert the "RCPW" disk into your PC and run A:\Setup.

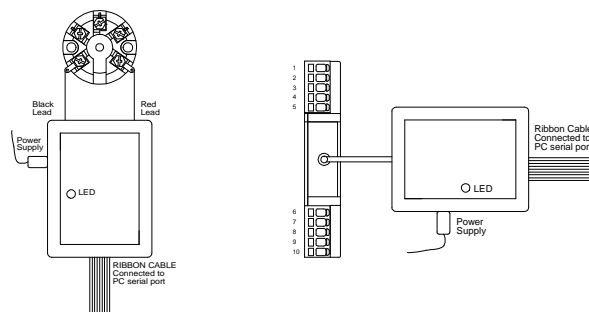
Installation directory for the storage defaults to C:\RCPW which can be amended. Icons are automatically created to run RCPW and to uninstall.

3.2 Connection using Configuration Module

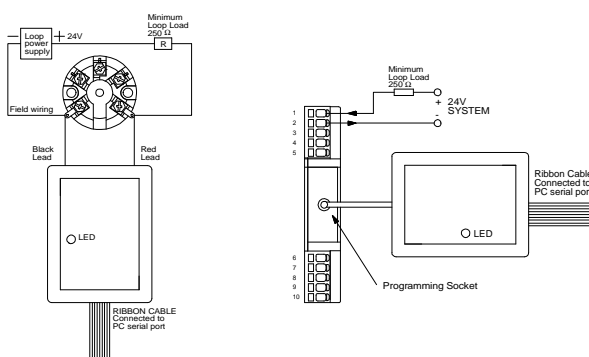
When configuration is made using an existing loop, the loop power supply must be capable of supplying 30mA and the load resistor chosen so that at least 10V remains across the transmitter, taking into account all other volt drops within the loop.

There are two possible methods of connecting the PC to the transmitter as below.

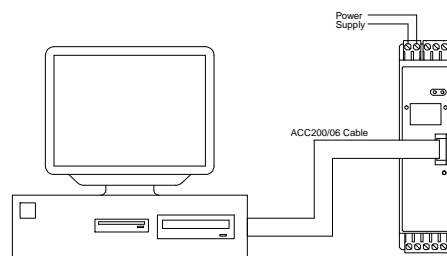
(A) Configurator Powered Programming



(B) Configuration for In-Loop Programming



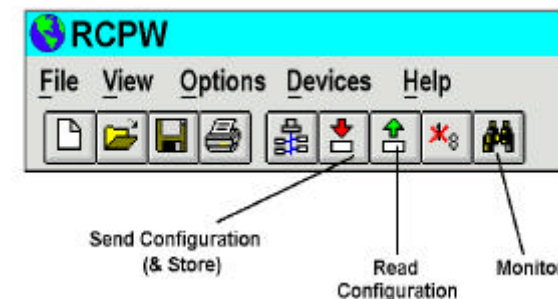
3.3 Connection with direct cable (Optional extra)



4.0 PROGRAMMING

4.1 Menu Structures

RCPW contains the following menus: File, View, Options, Devices and Help. These options can be selected with the mouse or by simultaneously depressing <ALT> and the letter underlined as above. Once a menu option has been selected, the status bar shows a brief description of the functions which are as follows:



FUNCTION

DESCRIPTION

File

New	Create a new device template
Open	Open an existing template
Close	Close template
Save	Save template
Save As	Save template as...
Print	Print the active document
Print Preview	Preview the active document
Print Setup	Setup options for printing
Exit	Exit RCPW

View

Toolbar	Show or hide the toolbar
Status Bar	Show or hide the status bar

Options

Set Password	Set or change the password
Enable Password	Enable or disable the password
Set Comm port	Choose serial comms port
Enable Config. Verification	Enable verification of parameters
Set Network Mode	Set network to single or multi device

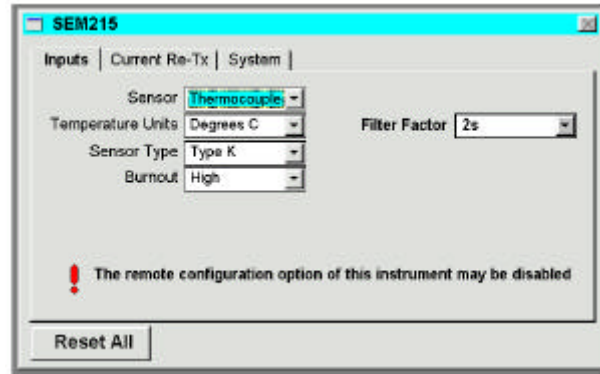
Devices

Scan Devices	Scan for devices on the network
Configure	Configure device with template parameter
Read	Read device parameter into template
Modify Device Address	Modify the address of a device
Monitor	Monitor devices

Help

Help	Detailed help
About	Program information, version, copyright

Template example is shown below, fields automatically update when changing sensor type etc.



Templates can be loaded/saved and uploaded/downloaded using the function list or icons from the previous page.

4.2 Programming instructions

Please take the following into account:

- A) Decimal numbers: the . (decimal point) is to be used.
- B) The parameters uploaded to the transmitter will over-write the previous settings.
- C) The Help menu gives further information about the program functions.
- D) When using configuration module connected to the normal measuring loop (as 3.2b) caution has to be taken for the following:
 - The loop supply unit must be able to deliver 32 mA continuously.
 - The load resistance at loop current 32 mA must not cause the voltage drop across the transmitter to become less than 10 V.
 - The load resistance has to be at least 250 ohms.

The 32 mA in the mA-loop will be drawn directly when the configurator is connected. Make sure that alarms and trip are deactivated.

To get started:

- a) Connect the unit as shown in Fig. 3.2 and 3.2.
- b) Read the actual configuration (setup status) of your connected transmitter by clicking in the read button.
- c) After a successful reading the template box will appear as shown above. You may now amend fields as necessary.

4.3 Troubleshooting

- a) Re-check the connections and electrical conditions.
- b) Check the chosen transmitter type and comms protocol:
 - Choose File, New and correct the transmitter type the software expects to communicate with.
 - Check comms protocol: Select "Options" and "Set network mode" , select "Single Device Mode"" and check that communication protocol is marked for the connected transmitter.

4.4 Some useful Hints

With Output adjustment you can adjust both the output and input range. Note that the software will recalculate the given data to a new input range that matches the standard output range 4-20 mA.

Sensor Offset: e.g. 0.1 means that a 0.1°C is all the time added to each measured value. The values shown in the Monitor function are not affected by the given Sensor Offset value.

To Save a configuration means to store it as a file. When a file is opened remember that the file format may be different for different type of transmitters.

RCPW CONFIGURATION MODULE

For configuration of Programmable Transmitters

Every effort has been taken to ensure the accuracy of this specification, however we do not accept responsibility for damage, injury, loss or expense resulting from errors and omissions, and we reserve the right of amendment without notice.

Stock code : 52-214-2244-01

Issue : 01