

**CMOS TIMER**

**Description**

The  $\mu$ PD5555 is a CMOS RC timer providing significantly improved performance over the standard bipolar 555 timer, while at the same time being direct replacement for that device in most applications. Improved parameters include low supply current, wide operating supply voltage range, THRESHOLD, TRIGGER and RESET currents as low as 2 pA, no crowbaring of the power supply during output transitions, higher frequency performance, and no requirement to decouple control voltage for stable operation.

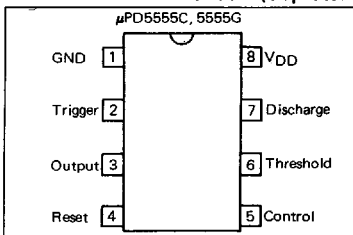
Specifically, the  $\mu$ PD5555 is stable controller capable of producing accurate time delays or frequencies.

In the one-shot mode, the pulse width of each circuit is precisely controlled by one external resistor and capacitor. For astable operation as an oscillator, the free running frequency and the duty cycle are controlled by two external resistors and one capacitor. The circuits can source or sink current large enough to drive TTL loads or provide minimal offsets to drive CMOS loads.

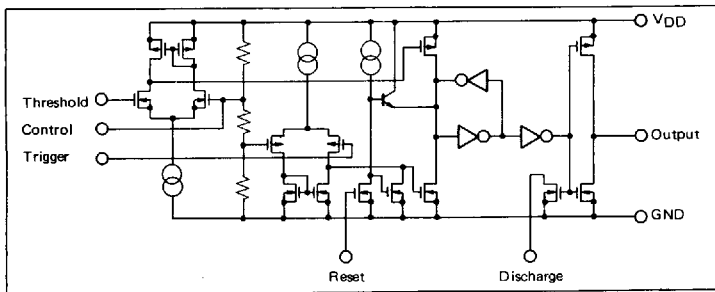
**Features**

- Exact equivalent in most cases for industry standard 555 timer
- Low supply current
- 3 to 16 V operating voltage range
- Timing from microseconds through hours

**CONNECTION DIAGRAM (Top View)**



**EQUIVALENT CIRCUIT**



**ORDERING INFORMATION**

Part Number	Package
$\mu$ PD5555C	8 PIN PLASTIC DIP (300 mil)
$\mu$ PD5555G2	8 PIN PLASTIC SOP (225 mil)

**ABSOLUTE MAXIMUM RATINGS (T<sub>a</sub>=25 °C)**

PARAMETER		SYMBOL	μPD5555	UNIT
Supply Voltage		V <sub>DD</sub>	18	V
Input Voltage (Trigger, Threshold, Reset, Control)		V <sub>IN</sub>	$GND - 0.3 \leq V_{IN} \leq V_{DD} + 0.3$	V
Output Current		I <sub>O</sub>	100	mA
Operating Temperature Range		T <sub>opt</sub>	-20 ~ +70	°C
Storage Temperature Range		T <sub>stg</sub>	-55 ~ +125	°C
Power Dissipation	C Package (Note 1)	P <sub>T</sub>	350	mW
	G Package (Note 2)		440	

Note 1: Thermal derating factor is -5 mW/°C when ambient temperature is higher than 55 °C.

Note 2: Thermal derating factor is -4.4 mW/°C when ambient temperature is higher than 25 °C.

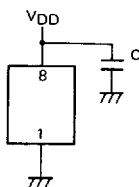
**RECOMMENDED OPERATING CONDITIONS**

CHARACTERISTIC	SYMBOL	MIN.	TYP.	MAX.	UNIT
Oscillation Frequency				500	kHz
Supply Voltage	V <sub>DD</sub>	3		16	V
Input Voltage	V <sub>IN</sub>	0		V <sub>DD</sub>	V
Output Sink Current	I <sub>O SINK</sub>			3.2	mA
Output Source Current	I <sub>O SOURCE</sub>			1	mA
Operating Temperature	T <sub>opt</sub>	-20		70	°C

ELECTRICAL CHARACTERISTICS (T<sub>a</sub>=25 °C, V<sub>DD</sub>=+3~+15 V)

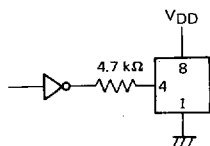
CHARACTERISTIC	SYMBOL	MIN.	TYP.	MAX.	UNIT	CONDITION
Supply Current	I <sub>DD</sub>		115	250	μA	V <sub>DD</sub> =5 V
			150	350		V <sub>DD</sub> =15 V
Threshold Voltage	V <sub>th</sub>		2/3 V <sub>DD</sub>		V	
Threshold Current	I <sub>th</sub>		50		pA	V <sub>DD</sub> =15 V
			10			V <sub>DD</sub> =5 V
			1			V <sub>DD</sub> =3 V
Trigger Voltage	V <sub>tr</sub>		1/3 V <sub>DD</sub>		V	
Trigger Current	I <sub>tr</sub>		50		pA	V <sub>DD</sub> =15 V
			10			V <sub>DD</sub> =5 V
			1			V <sub>DD</sub> =3 V
Reset Voltage (V <sub>O</sub> becomes low)	V <sub>reset</sub>	0.6	1.1	2.0	V	V <sub>DD</sub> =15 V
		0.6	1.1	2.0		V <sub>DD</sub> =3 V
Reset Current	I <sub>reset</sub>		100		pA	V <sub>RESET</sub> =GND, V <sub>DD</sub> =15 V
			20			V <sub>RESET</sub> =GND, V <sub>DD</sub> =5 V
			2			V <sub>RESET</sub> =GND, V <sub>DD</sub> =3 V
Output Low Voltage	V <sub>OL</sub>		0.06	0.4	V	V <sub>DD</sub> =15 V, I <sub>SINK</sub> =3.2 mA
			0.14	0.4		V <sub>DD</sub> =5 V, I <sub>SINK</sub> =3.2 mA
Output High Voltage	V <sub>OH</sub>	14.25	14.85		V	V <sub>DD</sub> =15 V, I <sub>SOURCE</sub> =1 mA
		4.0	4.7			V <sub>DD</sub> =5 V, I <sub>SOURCE</sub> =1 mA
Output Rise Time	t <sub>rise</sub>		40		ns	R <sub>L</sub> =10 MΩ, C <sub>L</sub> =7 pF, V <sub>DD</sub> =5 V
Output Fall Time	t <sub>fall</sub>		40		ns	R <sub>L</sub> =10 MΩ, C <sub>L</sub> =7 pF, V <sub>DD</sub> =5 V
Max. Oscillation Frequency		500			kHz	Astable Operation
Propagation Delay	t <sub>pd</sub>		350		ns	Monostable Operation Trigger Level = 0.1 · V <sub>DD</sub>
Minimum Trigger Pulse Width (V <sub>DD</sub> =5 V)	t <sub>tr</sub>		160		ns	Trigger Level = 0.1 · V <sub>DD</sub>
Control Voltage	V <sub>cont</sub>		2/3 V <sub>DD</sub>		V	
Timing Error			2		%	R <sub>1</sub> , R <sub>2</sub> =1 k~100 kΩ
Initial Accuracy						C=0.1 μF
Temperature Drift			50		ppm/°C	V <sub>DD</sub> =5~15 V
Supply Voltage Drift			1		%/V	

**Note 1:** To reduce transient switching noise on the supply voltage line, install a bypass capacitor from V<sub>DD</sub> to ground. Connect the capacitor, with value listed below, close to V<sub>DD</sub>.



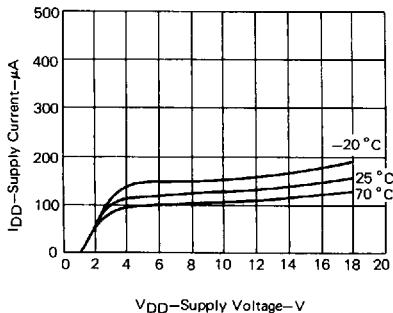
Capacitance C ≥ 0.047 μF V<sub>DD</sub> ≤ 10 V  
C ≥ 0.1 μF V<sub>DD</sub> > 10 V

**Note 2:** Install a series resistor (R ≥ 4.7 kΩ) to Reset, when reset is controlled by digital devices.

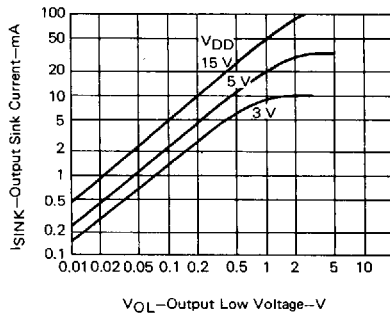


**TYPICAL PERFORMANCE CHARACTERISTICS ( $T_a=25^\circ\text{C}$ )**

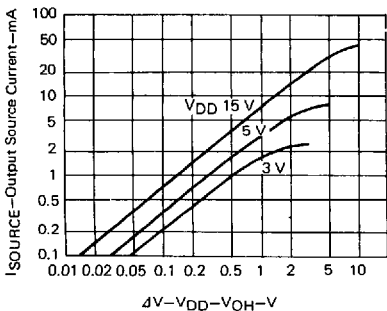
**SUPPLY CURRENT**



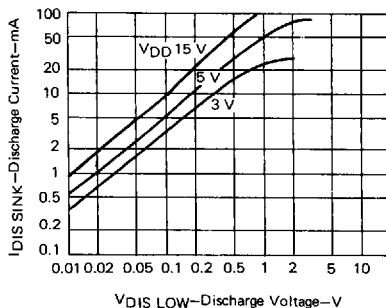
**OUTPUT SINK CURRENT**



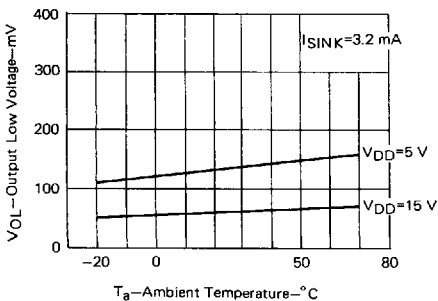
**OUTPUT SOURCE CURRENT**



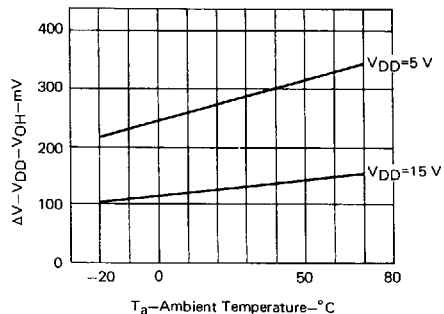
**DISCHARGE CURRENT**



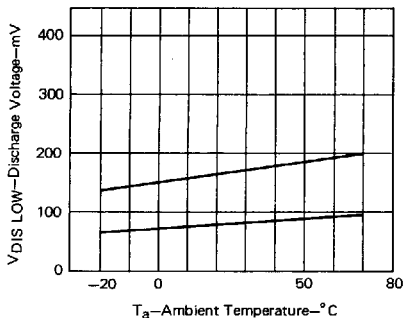
**OUTPUT LOW VOLTAGE**



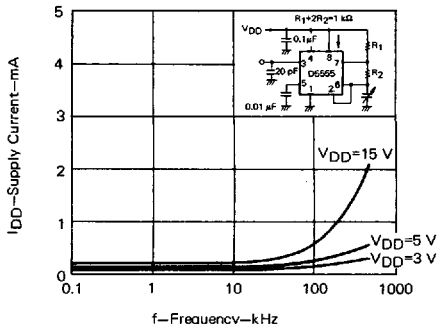
**V<sub>DD</sub>-OUTPUT HIGH VOLTAGE**



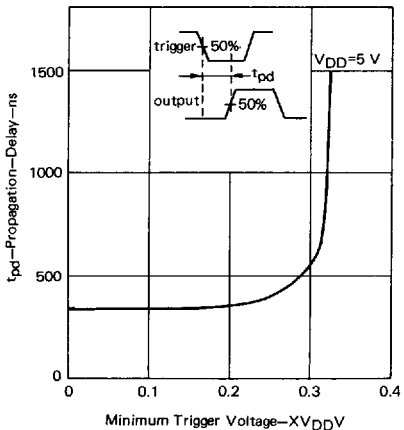
DISCHARGE VOLTAGE



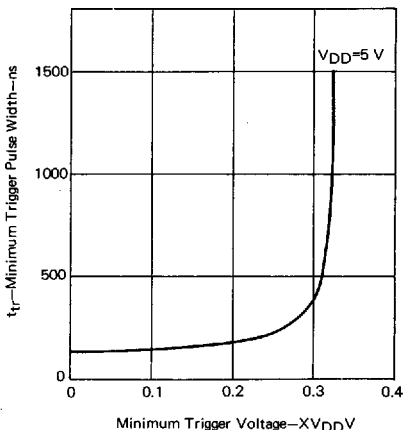
DYNAMIC CURRENT



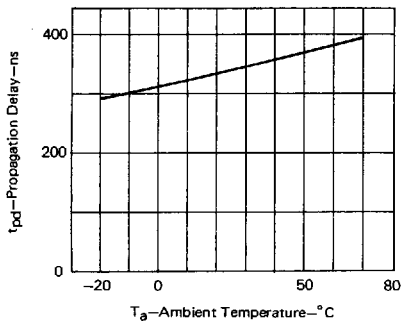
PROPAGATION DELAY



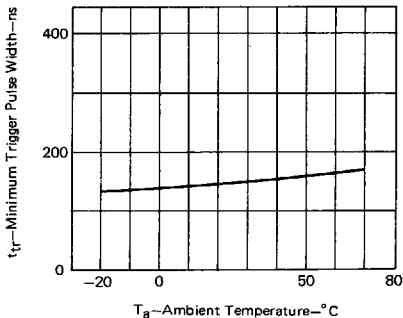
MINIMUM TRIGGER PULSE WIDTH



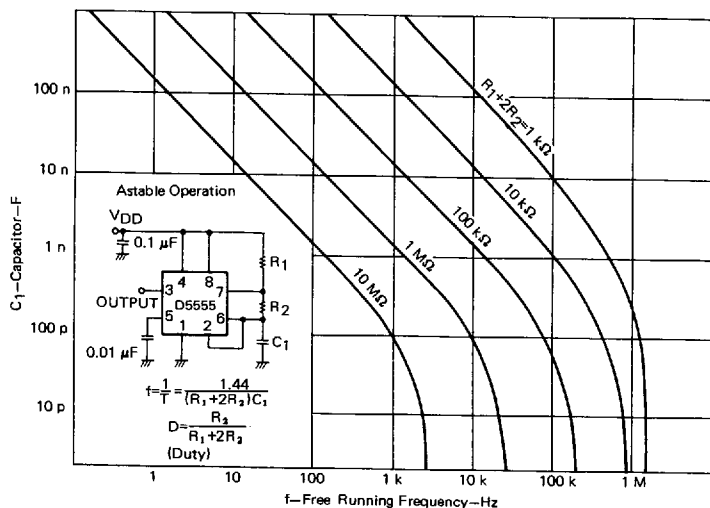
PROPAGATION DELAY



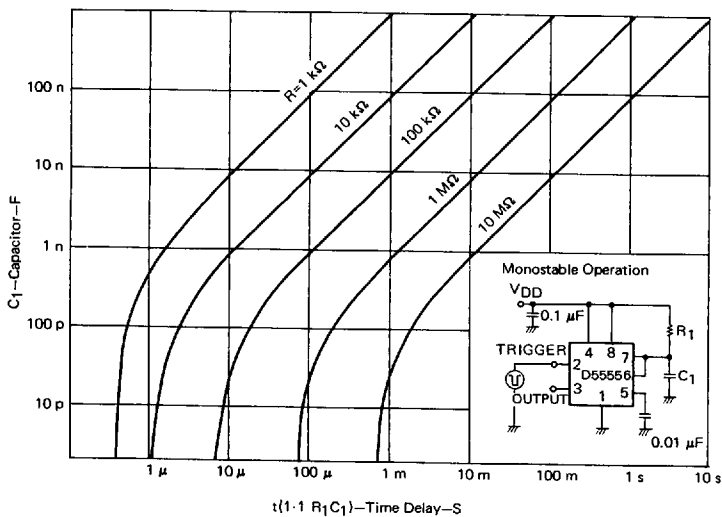
MINIMUM TRIGGER PULSE WIDTH

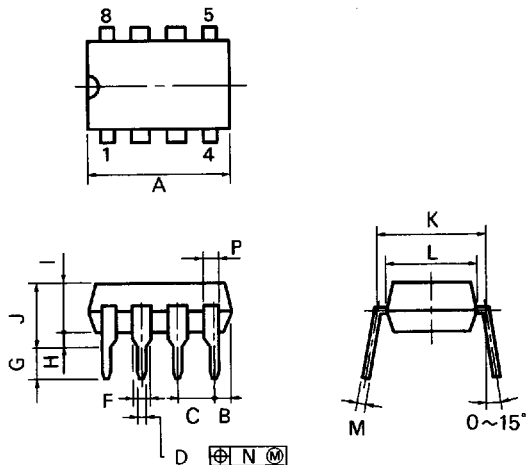


## FREE RUNNING FREQUENCY



## TIME DELAY



**8PIN PLASTIC DIP (300 mil)**


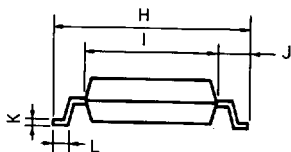
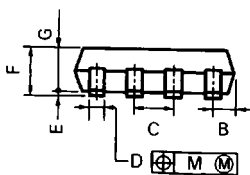
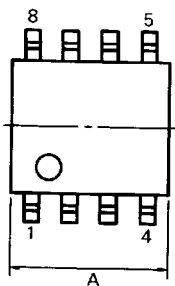
P8C-100-300B,C

**NOTES**

- Each lead centerline is located within 0.25 mm (0.01 inch) of its true position (T.P.) at maximum material condition.
- Item "K" to center of leads when formed parallel.

ITEM	MILLIMETERS	INCHES
A	10.16 MAX.	0.400 MAX.
B	1.27 MAX.	0.050 MAX.
C	2.54 (T.P.)	0.100 (T.P.)
D	0.50 <sup>+0.10</sup>	0.020 <sup>-0.005</sup>
F	1.4 MIN.	0.055 MIN.
G	3.2 <sup>+0.3</sup>	0.126 <sup>+0.012</sup>
H	0.51 MIN.	0.020 MIN.
I	4.31 MAX.	0.170 MAX.
J	5.08 MAX.	0.200 MAX.
K	7.62 (T.P.)	0.300 (T.P.)
L	6.4	0.252
M	0.25 <sup>+0.10</sup>	0.010 <sup>+0.005</sup>
N	0.25	0.01
P	0.9 MIN.	0.035 MIN.

## 8PIN PLASTIC SOP (225 mil)



S8GM-50-225B

**NOTE**

Each lead centerline is located within 0.12 mm (0.005 inch) of its true position (T.P.) at maximum material condition.

ITEM	MILLIMETERS	INCHES
A	5.70 MAX.	0.225 MAX.
B	0.94 MAX.	0.037 MAX.
C	1.27 (T.P.)	0.050 (T.P.)
D	0.40 $^{+0.10}_{-0.05}$	0.016 $^{+0.004}_{-0.003}$
E	0.1 $^{+0.1}$	0.004 $^{+0.004}$
F	1.8 MAX.	0.071 MAX.
G	1.49	0.059
H	6.5 $^{+0.3}$	0.256 $^{+0.012}$
I	4.4	0.173
J	1.1	0.043
K	0.15 $^{+0.10}_{-0.05}$	0.006 $^{+0.004}_{-0.002}$
L	0.6 $^{+0.2}$	0.024 $^{+0.008}_{-0.005}$
M	0.12	0.005