

PLEASE CHECK WWW.MOLEX.COM FOR LATEST PART INFORMATION

Part Number: [0355222403](#)
Status: **Active**
Description: 1.27/2.29/6.35mm (.050/.090/.250") Tab Hybrid Wire-to-Wire Housing, Male, 24 Circuits

Documents:

[Drawing \(PDF\)](#) [RoHS Certificate of Compliance \(PDF\)](#)
[Product Specification PS-35519-001 \(PDF\)](#)

General

Product Family	Crimp Housings
Series	35522
Comments	With option #1 polarization
Product Name	N/A

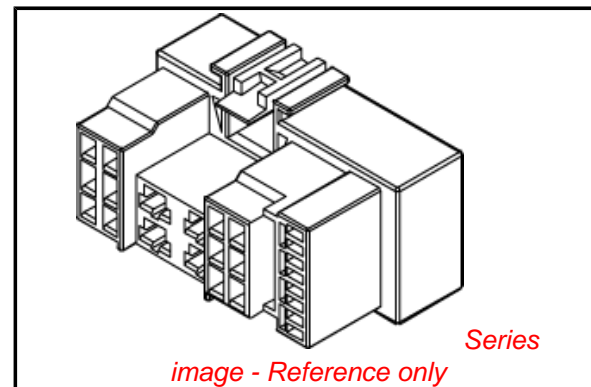
Physical

Circuits (maximum)	24
Color - Resin	Yellow
Gender	Male
Glow-Wire Compliant	No
Material - Resin	Polyester
Number of Rows	3
Packaging Type	Bag
Panel Mount	No
Pitch - Mating Interface (in)	0.098 In, 0.165 In, 0.374 In
Pitch - Mating Interface (mm)	2.50 mm, 4.20 mm, 9.50 mm
Stackable	No
Temperature Range - Operating	-40°C to +120°C

Material Info

Reference - Drawing Numbers

Product Specification	PS-35519-001
Sales Drawing	SD-35522-240*



EU RoHS

**ELV and RoHS
Compliant**
REACH SVHC
 Not Reviewed
**Halogen-Free
Status**
 Not Reviewed

China RoHS



**Need more information on product
environmental compliance?**

Email productcompliance@molex.com
 For a multiple part number RoHS Certificate of Compliance, [click here](#)

Please visit the [Contact Us](#) section for any non-product compliance questions.

Search Parts in this Series

[35522Series](#)

Mates With

[35198](#)|[35519](#)

Use With

[35725](#) , [35408](#) , [35417](#)

DWG. NO.
SD 35522-240*

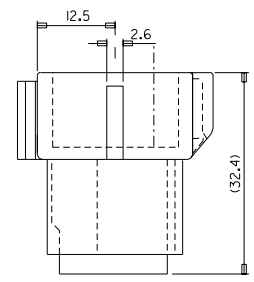
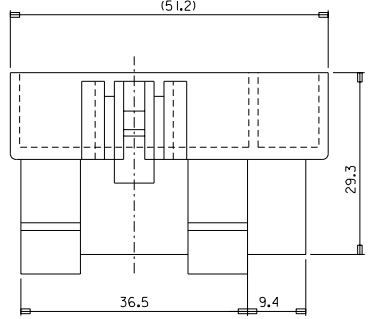
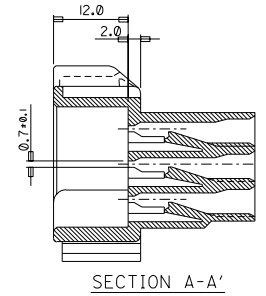
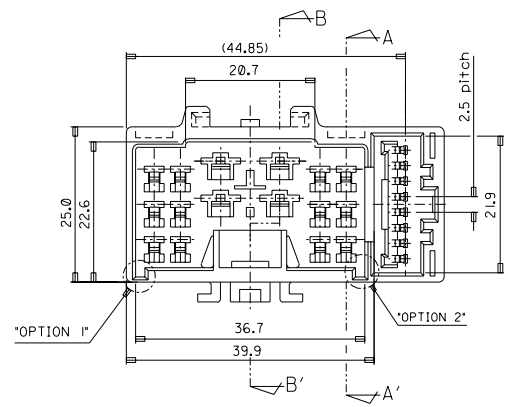
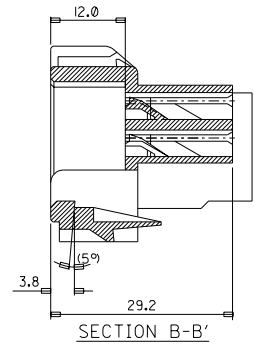
SIMILAR ITEM

PROJECT NO.
KOR 96-038

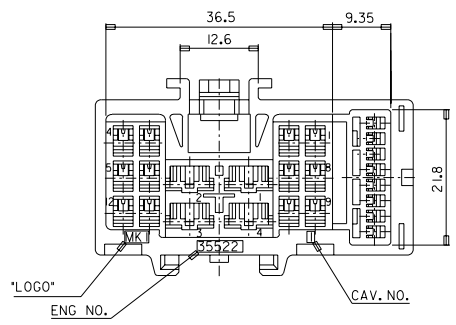
C

B

DO NOT SCALE DRAWING
DIMENSION IN METRIC



PART NO.	COLOR	REMARKS
E 35522-2403	YELLOW	WITH OPTION 1
E 35322-2405	GRAY	WITH OPTION 2



- NOTE
1. MATERIAL : POLYESTER (PBT)
 2. COLOR : SEE TABLE
 3. APPLICABLE TERMINAL : 35417-9*00/
35725-3**0/35408-***0
 4. APPLICABLE HOUSING : 35519-1603/1605
35198-0801/0890
 5. PRODUCT SPECIFICATION : PS-35522-0001.

REVISED	EC NO. KOR 1998-0116 DRWN: C.Y.CHO CHK: B.K.CHOI APPR: C.W.LEE	DESCRIPTION	MAJOR	QUALITY SYMBOLS	GENERAL TOLERANCES: (UNLESS SPECIFIED)		SCALE	DESIGN UNITS	THIRD ANGLE PROJECTION	DIMENSIONS:		SHT	REV	
			CRITICAL				1.5:1	<input checked="" type="checkbox"/> mm <input type="checkbox"/> INCH		<input type="checkbox"/> mm <input type="checkbox"/> INCH	<input checked="" type="checkbox"/> mm ONLY			
					4 PLACES	±.	±.	DRAWN BY & DATE		TITLE: 050/090/250 HYBRID MALE HOUSING (24P)				
					3 PLACES	±.	±.	C.Y.CHO 1998/05/15						
		2 PLACES	±0.20	±.	CHECKED BY & DATE		MOLEX INCORPORATED KOREA							
		1 PLACE	±0.30	±.	B.K.CHOI 1998/05/15									
			ANGULAR: ± 1°		APPROVED BY & DATE		CAD FILENAME	MATERIAL NO.	DRAWING NO.	SHEET NO.				
B	REV		DRAFT WHERE APPLICABLE MUST REMAIN WITHIN DIMENSIONS		C.W.LEE 1998/05/15				SD35522.DGN	SD 35522-240*	SD 35522-240*	1/1	SIZE B	
THIS DRAWING CONTAINS INFORMATION THAT IS PROPRIETARY TO MOLEX INCORPORATED AND SHOULD NOT BE USED WITHOUT WRITTEN PERMISSION.														