

PLEASE CHECK WWW.MOLEX.COM FOR LATEST PART INFORMATION

Part Number: [5033710000](#)
Status: **Active**
Description: 2.50mm (.098") Pitch Floating Wire-to-Board Plug Terminal, Reel

Documents:

[Drawing \(PDF\)](#) [RoHS Certificate of Compliance \(PDF\)](#)
[Product Specification PS-503367-001 \(PDF\)](#)

General

Product Family	Crimp Terminals
Series	503371
Crimp Quality Equipment	Yes
Product Name	N/A

Physical

Durability (mating cycles max)	100
Gender	Plug
Material - Metal	Copper Alloy
Material - Plating Mating	Gold
Material - Plating Termination	Tin
Packaging Type	Reel
Wire Insulation Diameter	1.40-1.70mm (.055-.067")
Wire Size AWG	22
Wire Size mm ²	N/A

Electrical

Current - Maximum per Contact	3A
Voltage - Maximum	250V AC (RMS)/DC

Material Info

Reference - Drawing Numbers

Application Specification	AS-503367-001
Product Specification	PS-503367-001
Sales Drawing	SD-503371-001

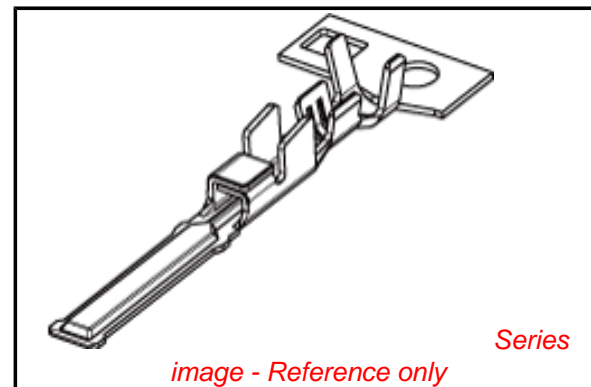


image - Reference only

EU RoHS

**ELV and RoHS
Compliant**
**REACH SVHC
Contains SVHC: No**
**Halogen-Free
Status
Not Reviewed**

China RoHS



**Need more information on product
environmental compliance?**

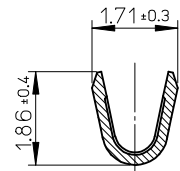
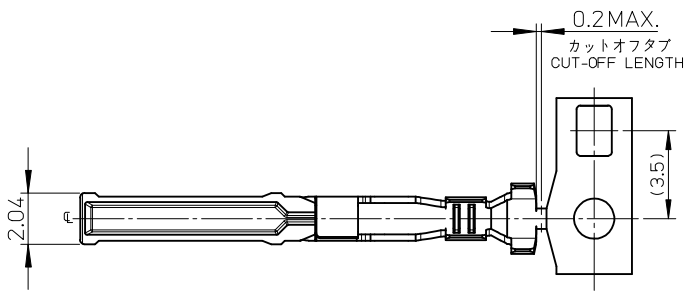
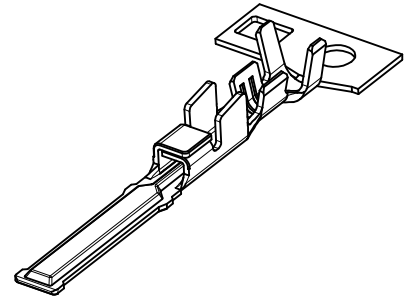
Email productcompliance@molex.com
 For a multiple part number RoHS Certificate of Compliance, [click here](#)

Please visit the [Contact Us](#) section for any non-product compliance questions.

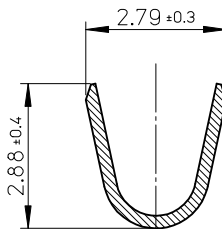
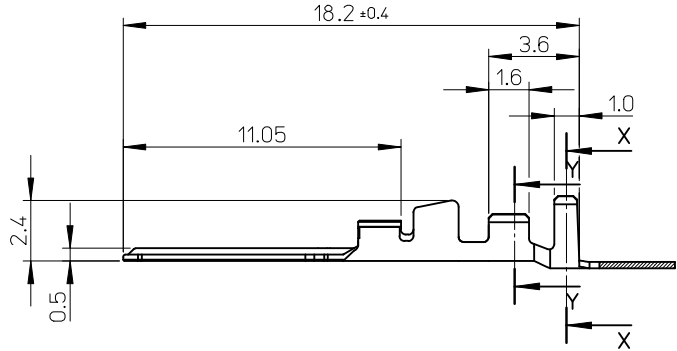
Search Parts in this Series
[503371Series](#)

Mates With
[503367](#) PCB Receptacle

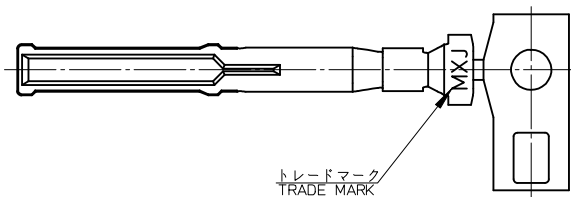
Use With
[503369](#) Plug Housing . [503371](#) Plug Adaptor



SECTION Y-Y
SCALE 10:1



SECTION X-X
SCALE 10:1



注記:
NOTES

- 材質:銅合金 (t=0.25)
MATERIAL: COPPER ALLOY (t=0.25)
- メッキ仕様
FINISHES
接点部:ニッケル下地金メッキ
CONTACT AREA: GOLD OVER NICKEL PLATING
金メッキ 0.1マイクロメートル以上
GOLD 0.1 MICROMETERS MINIMUM
ニッケル下地メッキ 1.0マイクロメートル以上
NICKEL 1.0 MICROMETERS MINIMUM
圧着部:ニッケル下地銀メッキ
CRIMP AREA: TIN OVER NICKEL PLATING
銀メッキ 1.0マイクロメートル以上
TIN 1.0 MICROMETERS MINIMUM
ニッケル下地メッキ 1.0マイクロメートル以上
NICKEL 1.0 MICROMETERS MINIMUM
- 嵌合相手:503369-***00
MATING CONNECTOR: 503369-***00
- 適用電線:AWG#22相当品
APPLICABLE WIRE: AWG#22
- 被覆外径:φ1.4~1.7
INSULATION OUTSIDE DIAMETER: φ1.4 - 1.7
- 製品仕様及び取り扱いについては、製品仕様書PS-503367-001及びコネクタ取扱説明書AS-503367-001を参照願います。
PLEASE REFER TO PRODUCTS SPECIFICATION PS-503367-001 AND USER'S MANUAL AS-503367-001.
- 圧着仕様については、圧着仕様書CS-503371-001を参照願います。
PLEASE REFER TO CRIMPING SPECIFICATION CS-503371-001.
- 適用圧着工具:578062-3000 (自動圧着機)
APPLICABLE CRIMPING TOOL: 578062-3000(AUTOMATIC)
- ELV及びRoHS適合品。
ELV AND RoHS COMPLIANT.

503371-0000	503371-****
連鎖状 CHAIN	MODEL NO.
オーダー番号 ORDER No.	

RELEASED EC NO: J2009-2286 DRWN:KWASHIO 2009/04/15 CHKD:SSAT003 2009/04/15 APPR:SI CHIKAWA 2009/04/15 REV: O	GENERAL TOLERANCES (UNLESS SPECIFIED)		DIMENSION STYLE MM ONLY		SCALE 5:1	DESIGN UNITS METRIC	THIRD ANGLE PROJECTION
	10 UNDER	±0.2	DRAWN BY KKOBAYASHI	DATE 09/04/15	TITLE 2.5 FLOATING CONN. PLUG CRIMP TERM.		
	10 OVER 30 UNDER	±0.25	CHECKED BY SSAT003	DATE 09/04/15	MOLEX INCORPORATED		
	30 OVER	±0.3	APPROVED BY SICHIKAWA	DATE 09/04/15	DOCUMENT NO. SD-503371-001	SHEET NO. 1 OF 1	
ANGULAR ±3 °		MATERIAL NO. SEE CHART		THIS DRAWING CONTAINS INFORMATION THAT IS PROPRIETARY TO MOLEX INCORPORATED AND SHOULD NOT BE USED WITHOUT WRITTEN PERMISSION			
DRAFT WHERE APPLICABLE MUST REMAIN WITHIN DIMENSIONS							