

PLEASE CHECK WWW.MOLEX.COM FOR LATEST PART INFORMATION

Part Number: **0357480210**
Status: **Active**
Overview: versablade
Description: Crimp Terminal 35748, 16-18 AWG

Documents:

Drawing (PDF)	Product Specification PS-35180-003 (PDF)
Product Specification PS-35150-001 (PDF)	Product Specification PS-35182-003 (PDF)
Product Specification PS-35150-003 (PDF)	Product Specification PS-35524-001 (PDF)
Product Specification PS-35180-002 (PDF)	RoHS Certificate of Compliance (PDF)

General

Product Family	Crimp Terminals
Series	<u>35748</u>
Crimp Quality Equipment	Yes
Overview	<u>versablade</u>
Product Name	VersaBlade™

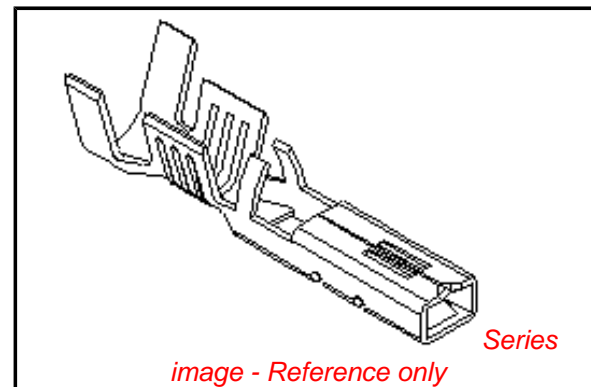
Physical

Gender	Female
Material - Metal	Phosphor Bronze
Material - Plating Mating	Tin
Material - Plating Termination	Tin
Packaging Type	Reel
Plating min: Mating (µin)	32.00
Plating min: Mating (µm)	0.800
Plating min: Termination (µin)	32.00
Plating min: Termination (µm)	0.80
Termination Interface: Style	Crimp or Compression
Wire Insulation Diameter	3.40mm (.134") max.
Wire Size AWG	16, 18
Wire Size mm²	N/A

Material Info

Reference - Drawing Numbers

Product Specification	PS-35150-001, PS-35150-003, PS-35180-002, PS-35180-003, PS-35182-003, PS-35524-001
Sales Drawing	SD-35748-001



EU RoHS

ELV and RoHS Compliant
REACH SVHC
Contains SVHC: No
Halogen-Free Status

China RoHS



Need more information on product environmental compliance?

Email productcompliance@molex.com
 For a multiple part number RoHS Certificate of Compliance, [click here](#)

Please visit the [Contact Us](#) section for any non-product compliance questions.

Search Parts in this Series

35748Series

Application Tooling | [FAQ](#)

Tooling specifications and manuals are found by selecting the products below. Crimp Height Specifications are then contained in the Application Tooling Specification document.

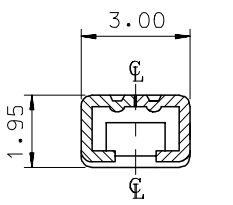
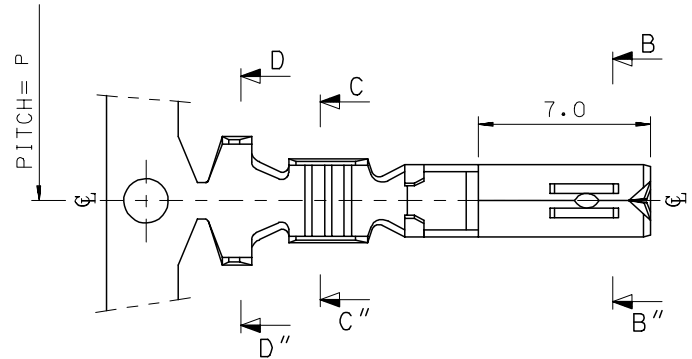
Global

Description	Product #
T2 Terminator Die	0638529100
FineAdjust™ Applicator	0638629100

10 9 8 7 6 5 4 3 2 1

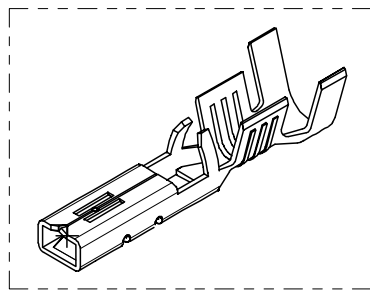
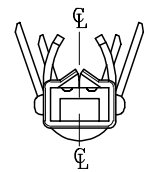
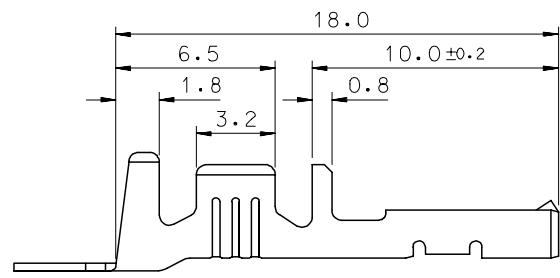
F
E
D
C
B
A

F
E
D
C
B
A

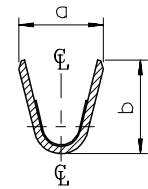
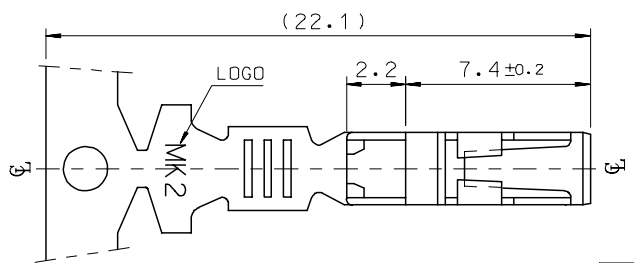


SEC' : B-B''

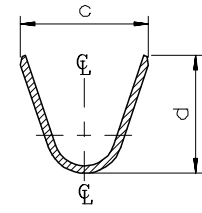
- NOTES
1. MATERIAL : PHOSPHOR BRONZE
0.3mm THICKNESS
 2. FINISH : PRE-PLATED TIN
 3. RECOMMENDED LENGTH OF WIRE STRIP IS 4.0-4.8mm.



ISOMETRIC VIEW



SEC' : C-C''



SEC' : D-D''

MATERIAL NO	ENG. No.	AWG	a	b	c	d	P
357480210	35748-0210	#18-#14	3.4	3.8	5.2	4.8	12.0
357480110	35748-0110	#22-#20	2.85	2.8	4.2	4.0	10.6
357480410	35748-0410	#24	2.2	1.75	3.85	3.5	10.6

REVISED
EC NO: KOR2008-0087
DRWN: JHPARK01 2007/11/15
CHKD: W. YANG 2007/11/15
APPR: YUNSIKKIM 2007/11/15

QUALITY SYMBOLS
▽=0
▽=0

	GENERAL TOLERANCES (UNLESS SPECIFIED)	
	mm	INCH
4 PLACES	± ---	± ---
3 PLACES	± ---	± ---
2 PLACES	± 0.3	± ---
1 PLACE	± 0.3	± ---
ANGULAR ± 1 °		

DIMENSION STYLE		SCALE		DESIGN UNITS		THIRD ANGLE PROJECTION	
MM ONLY	DATE	1:1	METRIC				
DRAWN BY	BK. CHOI	DATE	1992/11/17	TITLE		.070 FEMALE TERMINAL (B-TYPE)	
CHECKED BY	BK. CHOI	DATE	1992/11/17	APPROVED BY		CW. LEE	
APPROVED BY	CW. LEE	DATE	1992/11/17	MATERIAL NO.		DOCUMENT NO.	
DRAFT WHERE APPLICABLE MUST REMAIN WITHIN DIMENSIONS		SEE TABLE		SD-35748-001		SHEET NO. 1 OF 01	

MOLEX INCORPORATED

THIS DRAWING CONTAINS INFORMATION THAT IS PROPRIETARY TO MOLEX INCORPORATED AND SHOULD NOT BE USED WITHOUT WRITTEN PERMISSION

9 8 7 6 5 4 3 2 1