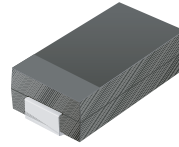


# SMD Schottky Barrier Rectifier

## SS12-G THRU SS110-G

### Reverse Voltage: 20~100 Volts

### Forward Current: 1.0 Amp

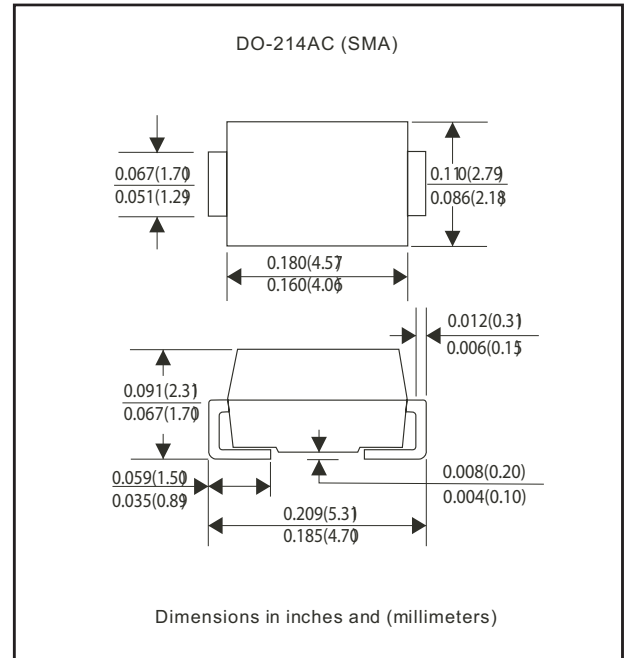


### Features

- Ideal for surface mount application
- Easy pick and place
- Plastic package has Underwriters Lab. Flammability classification 94V-0
- Built-in strain relief
- Low forward voltage drop

### Mechanical Data

- Case: JEDEC DO-214AC molded plastic
- Terminal: Solderable per MIL-STD-750 method 2026 guaranteed
- Polarity: Color band denotes cathode end
- Mounting position: Any
- Weight: 0.064 gram



### Maximum Rating and Electrical Characteristics

Parameter	Symbol	SS12-G	SS14-G	SS16-G	SS18-G	SS110-G	Unit	
Max. Repetitive Peak Reverse Voltage	$V_{RRM}$	20	40	60	80	100	V	
Max. DC Blocking Voltage	$V_{DC}$	20	40	60	80	100	V	
Max. RMS Voltage	$V_{RMS}$	14	28	42	56	70	V	
Peak Surge Forward Current 8.3ms single half sine-wave superimposed on rated load (JEDEC method)	$I_{FSM}$	35						A
Max. Average Forward Current	$I_o$	1.0						A
Max. Instantaneous Forward Current at 1.0 A	$V_F$	0.50		0.70		0.85	V	
Max. DC Reverse Current at Rated DC Blocking Voltage $T_a=25^{\circ}C$	$I_R$	0.5					mA	
$T_a=100^{\circ}C$		10		5				
Max. Thermal Resistance (Note 1)	$R_{\theta JA}$	88					$^{\circ}C/W$	
	$R_{\theta JL}$	20						
Operating Junction Temperature	$T_j$	-50 to +125					$^{\circ}C$	
Storage Temperature	$T_{STG}$	-65 to +150					$^{\circ}C$	

Note 1: Thermal resistance from junction to ambient and junction to lead P.C.B. Mounted on 0.2 x 0.2 copper pad areas

**-G** suffix designates RoHS compliant Version



## Rating and Characteristic Curves (SS12-G Thru SS110-G)

Fig. 1 - Reverse Characteristics

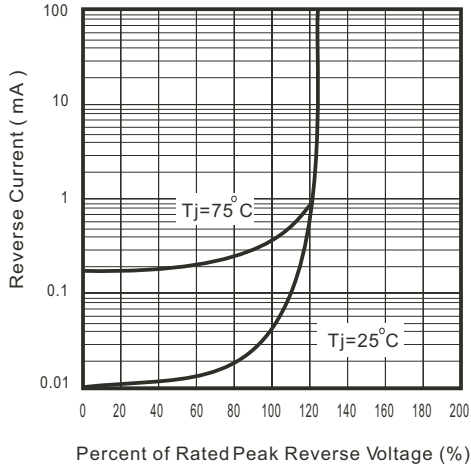


Fig. 2 - Forward Characteristics

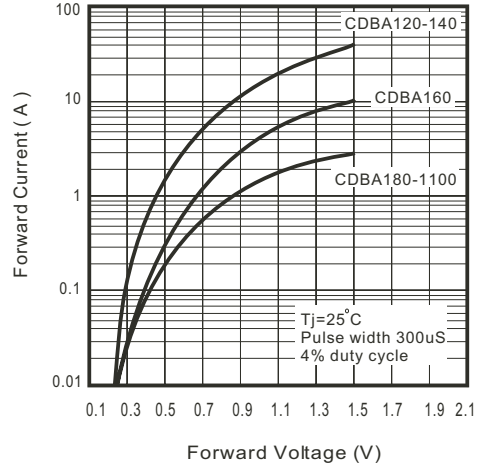


Fig. 3 - Junction Capacitance

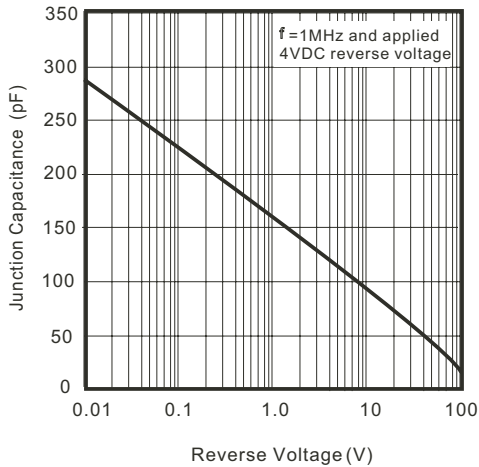


Fig. 4 - Current Derating Curve

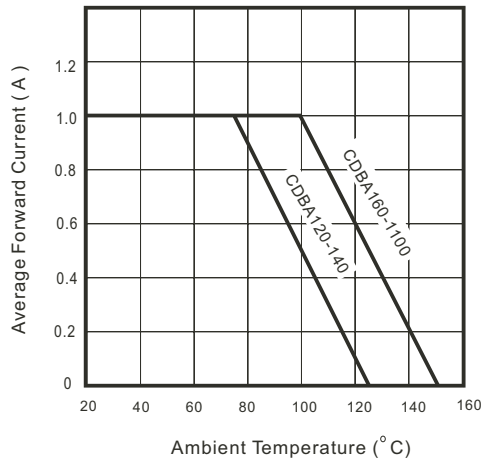


Fig. 5 - Non repetitive forward surge current

