

# Series IDC, (S)MIDC, X4IDC

## DC Input Modules

- Status Indicating LED on X4 Series
- UL, CSA, and CE

Solid state I/O switching modules deliver an electrically clean, photo-isolated, noise-free "output" interface from logic level control systems to external loads such as motors, valves, solenoids, etc. -- or an "input" interface from the load or sensors to microprocessor or computer-based logic level systems. Designed for long, reliable service in demanding industrial environments.

# CRYDOM

Control over power

### INPUT SPECIFICATIONS

	IDC5 (S)MIDC5 X4IDC5	IDC15 (S)MIDC15 X4IDC15	IDC24 (S)MIDC24 X4IDC24	IDC5D (S)MIDC5D X4IDC5D	IDC15D (S)MIDC15D X4IDC15D	IDC24D (S)MIDC24D X4IDC24D
Nominal Input Voltage [Vdc]	24	24	24	24	24	24
Min. Input Voltage [Vdc]	10	10	10	3.3	3.3	3.3
Max. Input Voltage [Vdc]	60	60	60	32	32	32
Nominal Input Resistance [ohm]	-	-	-	1K	1K	1K
Max. Input Current [mAdc]	60	60	60	32	32	32
Drop Out Current [mAdc]	1.0	1.0	1.0	1.0	1.0	1.0
Allowable Off-State Current [mAdc]	1.0	1.0	1.0	1.0	1.0	1.0
Allowable Off-State Voltage [Vdc]	2.0	2.0	2.0	2.0	2.0	2.0

### OUTPUT SPECIFICATIONS

Nominal Logic Voltage [Vdc]	5	15	24	5	15	24
Min. Logic Voltage [Vdc] (X4 Series)	1.5 (3)	8.5 (10)	16.5 (18)	1.5 (3)	8.5 (10)	16.5 (18)
Max. Logic Voltage [Vdc] (X4 Series)	6.0 (7)	18.5 (20)	30.5 (32)	5.5 (7)	18.5 (20)	30.5 (32)
Typical Logic Supply Current [mAdc]	10	10	10	10	10	10
Max. Logic Supply Current [mAdc]	18	16	14	18	16	14
Max. Logic Supply Leakage Current [µAdc]	10	10	10	10	10	10
Max. Output Voltage [Vdc]	30	30	30	30	30	30
Max. Output Current [mAdc]	50	50	50	50	50	50
Max. Output Leakage Current [µAdc]	10	10	10	10	10	10
Max. Output Voltage Drop [mVdc]	200	200	200	200	200	200
Max. Turn-On Time [µsec] ①	1000	1000	1000	300	300	300
Max. Turn-Off Time [µsec] ①	1000	1000	1000	600	600	600

### GENERAL NOTES

① At nominal voltage and room temperature.

©1998 CRYDOM CORP Specifications subject to change without notice.

For recommended applications and more information contact:

USA: (800) 8 CRYDOM • (800) 827-9366 • (619) 715-7200 • fax (619) 715-7280

Crydom Corp, 9525 Chesapeake Drive, San Diego, CA 92123 • e-mail: sales@crydom.com

WEB SITE: <http://www.crydom.com> FASTFAX Product Information: (888) 267-9191

UK: (44)1202 812300 • fax (44)1202 812340 Crydom International Ltd., 85, Condor Close,

Woolbridge Industrial Estate, Three-Legged Cross, Wimborne, Dorset, England BH21 6SJ

GERMANY: (49) (0)6874 182580 • fax (49)(0)6874 182585 Crydom GmbH,

Gewerbegebiet Im Schachen, D-66687 Nunkirchen, Germany • e-mail: vertrieb@crydom.com

Fast Fax Document No. 301  
SERIES IAC.070898, PAGE 1 OF 2



# Series IDC, (S)MIDC, X4IDC

## DC Input Modules



### GENERAL SPECIFICATIONS

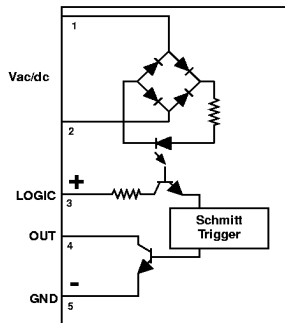
Operating temperature range	-30 to +80°C
Storage temperature range	-40 to +100°C
Isolation	4,000 Vrms
Capacitance input to output	8 pF
Package Color	White

### APPLICATION NOTES

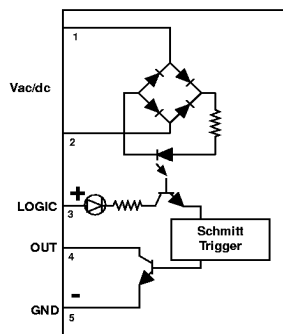
- Do not install or remove modules in live (electrically hot) circuits. High voltage may be present.
- An externally located commutating diode must be installed across inductive loads
- I/O module boards also available

### WIRING & MECHANICAL DIAGRAMS

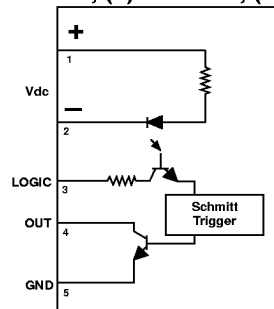
IDC5, IDC15, IDC24  
(S)MIDC5, MIDC15, MIDC24



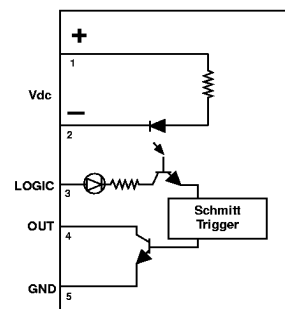
X4IDC5, X4IDC15, X4IDC24



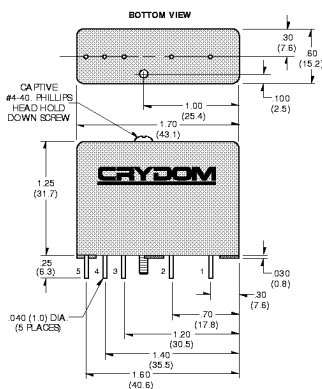
IDC5D, IDC15D, IDC24D  
(S)MIDC5D, (S)MIDC15D, (S)MIDC24D



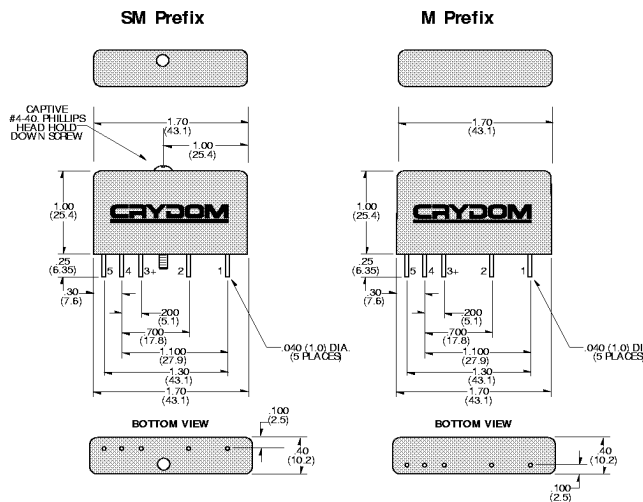
X4IDC5D, X4IDC15D, X4IDC24D



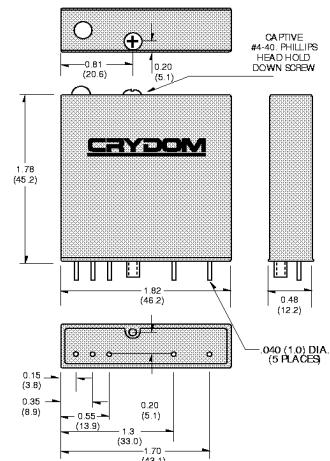
Standard Series, IDC



MINI-PACK Series, (S)MIDC



X4 Series, X4IDC



All dimensions are in inches (millimeters)

©1998 CRYDOM CORP Specifications subject to change without notice.

For recommended applications and more information contact:

**USA:** (800) 8 CRYDOM • (800) 827-9366 • (619) 715-7200 • fax (619) 715-7280  
 Crydom Corp, 9525 Chesapeake Drive, San Diego, CA 92123 • e-mail: sales@crydom.com  
**WEB SITE:** http://www.crydom.com **FASTFAX Product Information:** (888) 267-9191  
**UK:** (44)1202 812300 • fax (44)1202 812340 Crydom International Ltd., 85, Condor Close,  
 Woolsbridge Industrial Estate, Three-Legged Cross, Wimborne, Dorset, England BH21 6JU  
**GERMANY:** (49) (0)6874 182580 • fax (49)(0)6874 182585 Crydom GmbH,  
 Gewerbegebiet Im Schachen, D-66687 Nunkirchen, Germany • e-mail: vertrieb@crydom.com

