



SAW Components

Data Sheet B3882



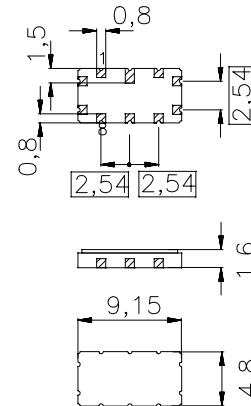
Data Sheet

 Ceramic package **QCC10B**
Features

- Low-loss filter
- Multichannel CDMA2000 capable
- Balanced or unbalanced operation possible
- Temperature stable
- Hermetically sealed ceramic SMD package

Terminals

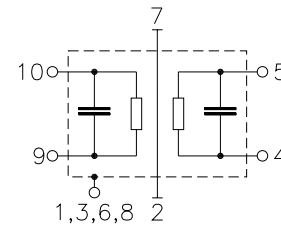
- Gold plated



Dimensions in mm, approx. weight 0,23 g

Pin configuration

10	Input
9	Input ground or balanced input
5	Output
4	Output ground or balanced output
2, 7	Ground
1, 3, 6, 8	To be grounded



Type	Ordering code	Marking and Package according to	Packing according to
B3882	B39171-B3882-Z710	C61157-A7-A49	F61074-V8172-Z000

Electrostatic Sensitive Device (ESD)
Maximum ratings

Operable temperature range	T	-40/ +85	°C
Storage temperature range	T_{stg}	-40/ +85	°C
DC voltage	V_{DC}	5	V
Source power	P_s	10	dBm



SAW Components

B3882

Low-Loss Filter

168,96 MHz

Data Sheet

Characteristics

Operating temperature: $T = 0 \dots +85 \text{ }^\circ\text{C}$
 Terminating source impedance: $Z_S = 50 \text{ } \Omega$ single ended and matching network
 Terminating load impedance: $Z_L = 50 \text{ } \Omega$ single ended and matching network

		min.	typ.	max.	
Nominal frequency	f_N	—	168,96	—	MHz
Minimum insertion attenuation (including matching network)	α_{\min}	—	13,0	14,5	dB
Passband width					
$\alpha_{\text{rel}} \leq 1 \text{ dB}$	$B_{1\text{dB}}$	—	4,4	—	MHz
$\alpha_{\text{rel}} \leq 5 \text{ dB}$	$B_{5\text{dB}}$	—	4,9	—	MHz
$\alpha_{\text{rel}} \leq 30 \text{ dB}$	$B_{30\text{dB}}$	—	6,1	—	MHz
Amplitude ripple¹⁾ (p-p)	$\Delta\alpha$				
$f_N \pm 1,92 \text{ MHz}$		—	0,5	0,9	dB
$f_N \pm k*1,25 \text{ MHz} \pm 0,6144 \text{ MHz}$		—	0,4	0,7	dB
Group delay ripple (p-p)	$\Delta\tau$				
$f_N \pm 1,92 \text{ MHz}$		—	70	120	ns
Phase Linearity¹⁾ (rms)	$\Delta\phi$				
$f_N \pm 1,92 \text{ MHz}$		—	1,0	1,4	$^\circ$
$f_N \pm k*1,25 \text{ MHz} \pm 0,6144 \text{ MHz}$		—	1,0	1,4	$^\circ$
Average Error Vector Magnitude¹⁾	EVM				
$f_N \pm 1,92 \text{ MHz}$		—	1,9	3,0	%
$f_N \pm k*1,25 \text{ MHz} \pm 0,6144 \text{ MHz}$		—	1,9	3,0	%
Relative attenuation (relative to α_{\min})	α_{rel}				
$f_N \pm 2,5 \text{ MHz} \dots f_N \pm 3,0 \text{ MHz}$		4	5	—	dB
$f_N \pm 3,0 \text{ MHz} \dots f_N \pm 17,5 \text{ MHz}$		10	20	—	dB
$f_N \pm 17,5 \text{ MHz} \dots f_N \pm 66,0 \text{ MHz}$		45	50	—	dB
Temperature coefficient of frequency²⁾	TC_f	—	-0,036	—	ppm/K ²
Turnover temperature	T_0	—	35	—	$^\circ\text{C}$

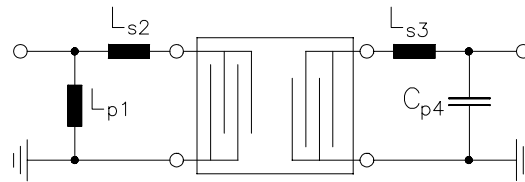
¹⁾Amplitude ripple/Phase Linearity/Average Error Vector Magnitude: where $k = (-1,0,1)$

²⁾ Temperature dependence of f_c : $f_c(T_A) = f_c(T_0)(1 + TC_f(T_A - T_0)^2)$

Data Sheet

Matching network to 50 Ω single ended input and output:

(Element values depend upon PCB layout)



$$L_{p1} = 18 \text{ nH}$$

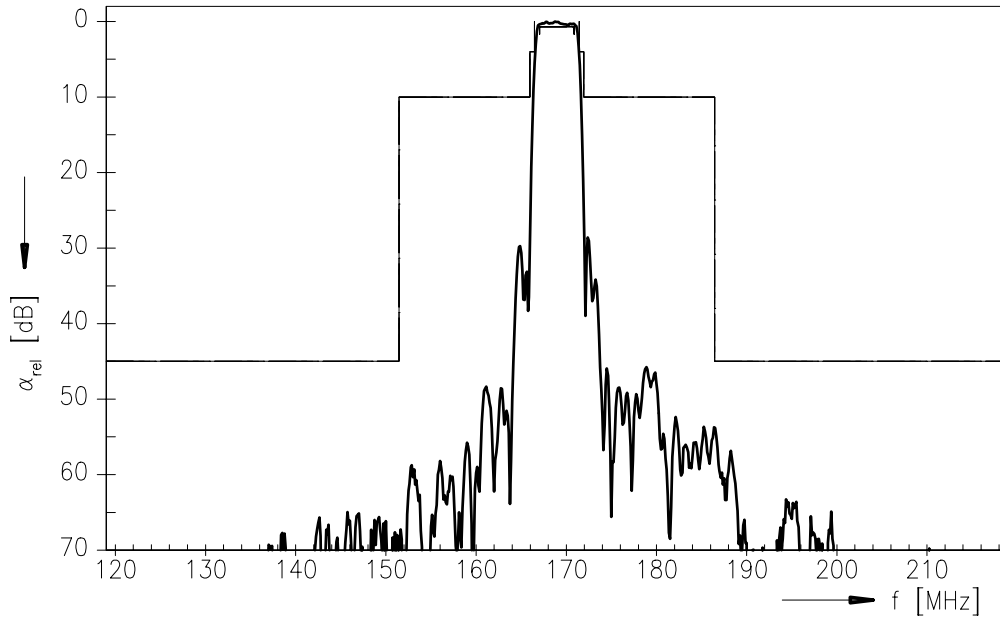
$$L_{s2} = 68 \text{ nH}$$

$$L_{s3} = 120 \text{ nH}$$

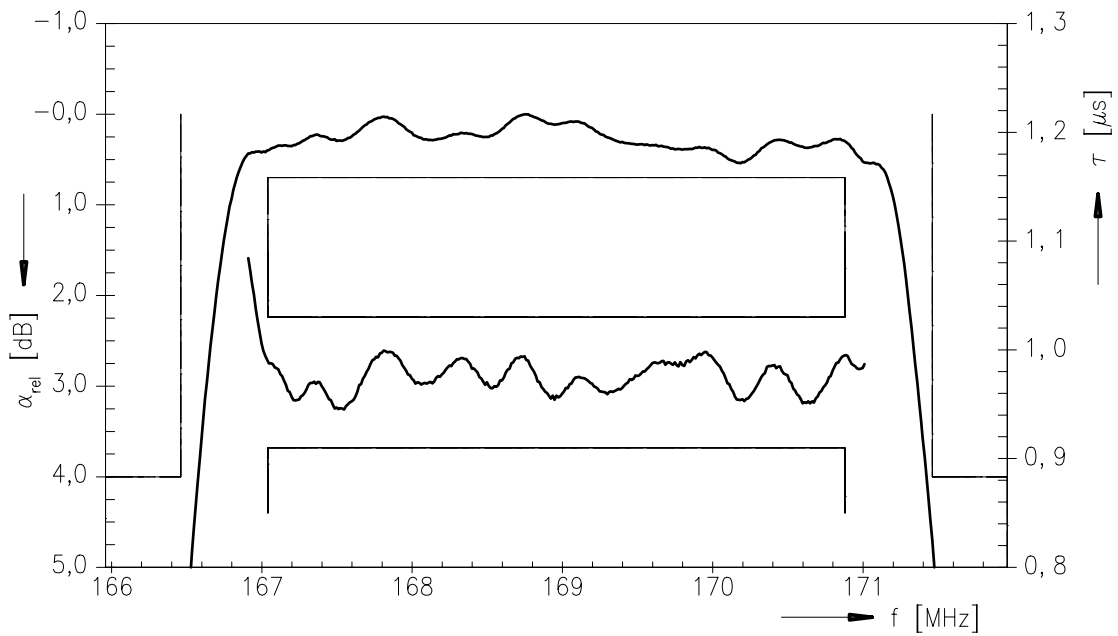
$$C_{p4} = 56 \text{ pF}$$

Data Sheet

Normalized frequency response



Normalized frequency response (pass band)





SAW Components

B3882

Low-Loss Filter

168,96 MHz

Data Sheet

Published by EPCOS AG

Surface Acoustic Wave Components Division, SAW MC PD

P.O. Box 80 17 09, 81617 Munich, GERMANY

© EPCOS AG 2004. Reproduction, publication and dissemination of this brochure and the information contained therein without EPCOS' prior express consent is prohibited.

Purchase orders are subject to the General Conditions for the Supply of Products and Services of the Electrical and Electronics Industry recommended by the ZVEI (German Electrical and Electronic Manufacturers' Association), unless otherwise agreed.

This brochure replaces the previous edition.

For questions on technology, prices and delivery please contact the Sales Offices of EPCOS AG or the international Representatives.

Due to technical requirements components may contain dangerous substances. For information on the type in question please also contact one of our Sales Offices.