

SINGLE TONE MELODY C-MOS

■ GENERAL DESCRIPTION

The NJU501 series is a single tone melody C-MOS IC incorporated with 64 notes ROM.

It plays the melody using a piezo buzzer and single battery only.

The NJU501 has 3 kinds of playing modes and these modes can be selected by either bonding or soldering option.

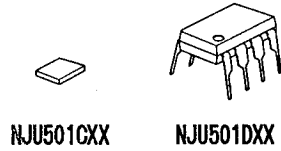
After melody playing, the LSI shifts mode to the power saving mode with oscillation stop to realize the long battery life.

The NJU501 series is suitable for melody greeting cards, toys, telephone rests and so on.

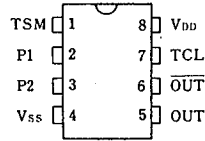
■ FEATURES

- Operating Voltage --- 1.2 ~ 3.6V
- Low Current Consumption
- 3 kinds of Playing Modes
 - Bonding or Soldering Option
- CR Oscillation Circuits On-chip
- Piezo Buzzer Direct Drive
- Minimum External Components
- Power Saving Function
 - Oscillation Stop After Replay
 - Value Shifted Pull-down Resistance
- Package Outline : DIP / DMP / CHIP 8
- C-MOS Technology

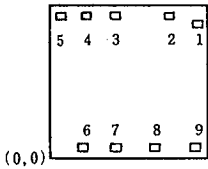
■ PACKAGE OUTLINE



■ PIN CONFIGURATION



■ PAD LOCATION

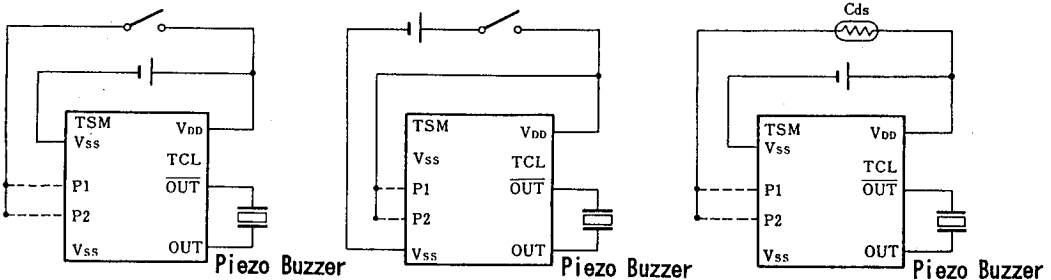


■ COORDINATES

UNIT: μm

No.	PAD Name	X	Y
1	TSM (NC)	1830	1780
2	V _{SS}	1540	1870
3	P ₁	870	1870
4	P ₂	460	1870
5	V _{SS}	130	1840
6	OUT	460	130
7	OUT	870	130
8	TCL (NC)	1320	130
9	V _{DD}	1830	130

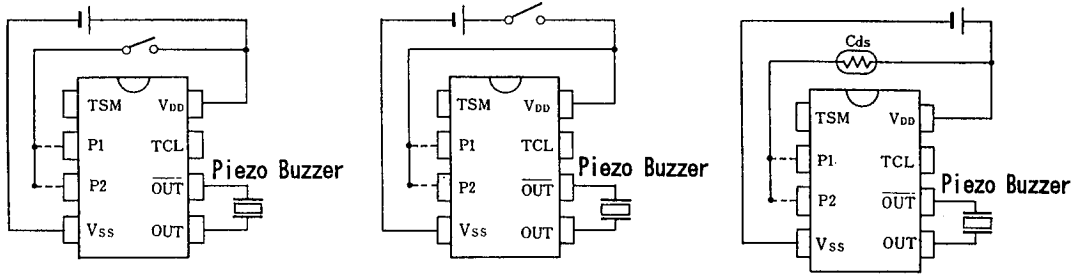
■ APPLICATION CIRCUITS (CHIP FORM)



CHIP SIZE: 1.96X2.00mm

CHIP THICKNESS: 400 μm \pm 30 μm

12

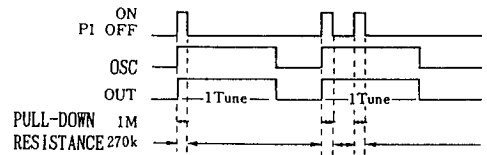
APPLICATION CIRCUITS (PACKAGE FORM)

PLAYING MODE

The NJU501 series have following 3 kinds of playing mode selected by P1 and/or P2 terminal.

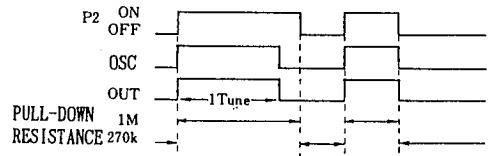
P1	P2	Playing Mode
○		One-Shot 1 (Edge trigger type)
	○	One-Shot 2 (Level control type)
○	○	Level Hold

(1) One-shot 1

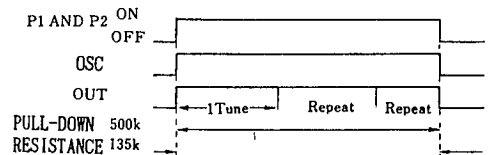
Melody is playing once when the P1 input turns on, then automatically stops at its end. The P1 input is disregarded during the play.


(2) One-shot 2

When the P2 input is remaining on over the one play cycle, melody is played once then automatically stops at its end. When the P2 input is turned off before the melody end, the melody stops halfway.


(3) Level hold

Melody is repeated while the both input of P1 and P2 remaining on. It stops when both input of P1 and P2 are turned off.



Note 1) Turn on level of P1 and P2 is V_{DD} .

Note 2) Minimum pulse width of all input are required over then 64msec as chatter free time.

■ POWER SAVE FUNCTION

- (1) Oscillation Stop Function.....Oscillation stops automatically when melody stops.
The current consumption is less than $0.3\mu\text{A}$ while no playing.
- (2) Input Current on P1 and P2.....Variable Pull-down resistance of P1 and P2 is controlled by switch conditions is as follows:
 During making (V_{DD})..... $1\text{M}\Omega/1$ Input
 During breaking (V_{SS})..... $270\text{K}\Omega/1$ Input
 This function is especially effective for Cds using application.

■ ABSOLUTE MAXIMUM RATINGS

PARAMETER	SYMBOL	RATINGS	UNIT
Supply Voltage	$V_{DD}-V_{SS}$	- 0.3 ~ + 5.0	V
Input Voltage	V_{IN}	$V_{SS}-0.2 \sim V_{DD}+0.2$	V
Operating Temperature	T_{OPR}	- 30 ~ + 85	$^{\circ}\text{C}$
Storage Temperature	T_{STG}	- 65 ~ + 125	$^{\circ}\text{C}$

■ ELECTRICAL CHARACTERISTICS

 ($T_a=25^{\circ}\text{C}$, $V_{DD}=1.5\text{V}$)

PARAMETER	SYMBOL	CONDITIONS	MIN	TYP	MAX	UNIT	
Operating Voltage	V_{DD}		1.2	1.5	3.6	V	
Stand-by Current	I_{DD1}	No Play, P1, P2 Open		0.01	0.3	μA	
Operating Current	I_{DD2}	Playing, OUT, $\overline{\text{OUT}}$ Open		40	70	μA	
Input Current	I_{IL}	P1, P2	$V_{IL}=0.4\text{V}$	0.7	1.5	3.0	μA
	I_{IH}		$V_{IH}=1.1\text{V}$	0.7	1.5	3.0	
Output Current	I_{OL}	OUT, $\overline{\text{OUT}}$	$V_{OL}=0.75\text{V}$	2.0		mA	
	I_{OH}		$V_{OH}=0.75\text{V}$	2.0			
Oscillation Frequency	f_o		80	100	120	kHz	
Osc. Stop Voltage	V_{DS}				1.2	V	

12

■ MUSICAL SPECIFICATION

(1) TEMPO

NJU501 series can take from any one of following 15 different tempos.

$\text{♩} =$	Tempo
43.5	LARGO
46.4	
49.7	
53.5	ADAGIO
58	
63.3	
69.6	ANDANTE
77.3	
87	
99.4	MODERATO
116	
139	PREST
174	
232	
348	

(2) NOTE/REST

The following 8 different notes and rest are provided.

Other kinds of note and rests may also be played by using TIE function.

notes	rests

(3) JUMP FUNCTION

Jump function saves the number of notes programed by repeating the same part.

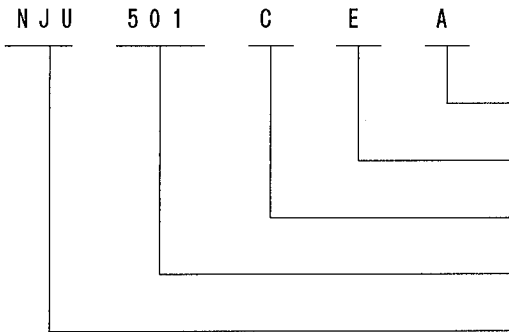
Maximum 7 jumps are available.

(4) COMPASS & SCALE

NJU501 series can poly 15 kinds of scales over 3 1/2 octave of G3 to D7 or G4 to D8.

■ ORDERING INFORMATION

The NJU501 series is named by following rules:



Music title

Music field

Package outline (C: Chip, D: DIP, M: DMP)

Device name

The mark of NJRC C-MOS products

NJU501 Series

MEMO

[CAUTION]

The specifications on this databook are only given for information, without any guarantee as regards either mistakes or omissions. The application circuits in this databook are described only to show representative usages of the product and not intended for the guarantee or permission of any right including the industrial rights.