

Features

- Wavelength : 790 nm (Typ.)
- Frame type : compact, light weight, thin package
- Low threshold current : I_{th} = 20 mA (Typ.)
- PIN photodiode built-in for light output monitor

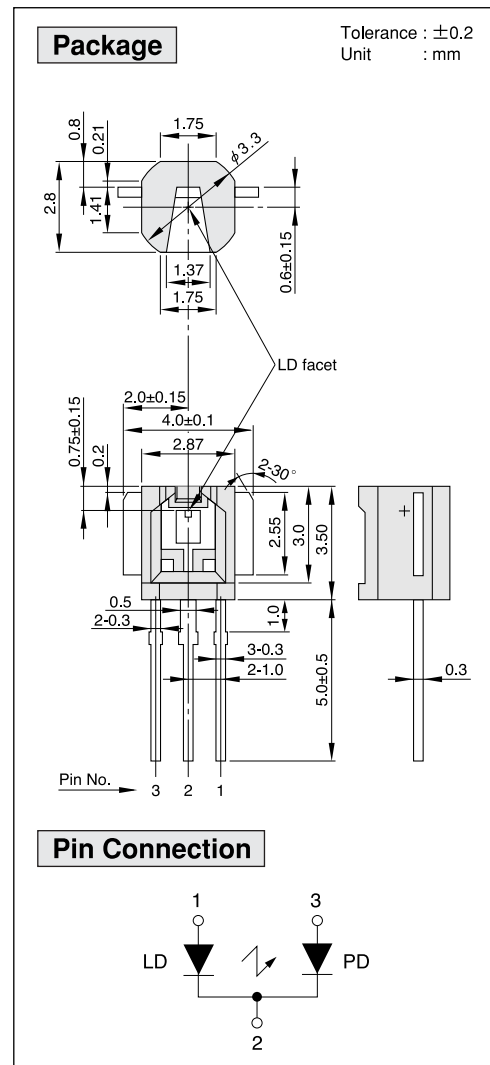
Applications

- CD, CD-ROM, VD

Absolute Maximum Ratings

(T_c = 25°C)

Parameter		Symbol	Ratings	Unit
Light Output	CW	P _o	5	mW
Reverse Voltage	LD	V _R	2	V
	PD		30	
Operating Temperature		T _{opr}	-10 to +60	°C
Storage Temperature		T _{stg}	-40 to +85	°C



Electrical and Optical Characteristics ^{1) 2)}

(T_c = 25°C)

Parameter		Symbol	Condition	Min.	Typ.	Max.	Unit
Threshold Current		I _{th}	CW	—	20	35	mA
Operating Current		I _{op}	P _o =3mW	—	25	45	mA
Operating Voltage		V _{op}	P _o =3mW	—	1.8	2.3	V
Lasing Wavelength		λ _p	P _o =3mW	—	790	805	nm
Beam Divergence ³⁾	Perpendicular	θ _⊥	P _o =3mW	25	35	45	°
	Parallel	θ _∥	P _o =3mW	8	11	14	°
Off Axis Angle	Perpendicular	Δθ _⊥	—	—	—	±3	°
	Parallel	Δθ _∥	—	—	—	±2	°
Differential Efficiency		dP _o /dI _{op}	—	0.3	—	—	mW/mA
Monitoring Output Current		I _m	P _o =3mW	0.05	0.2	0.4	mA
Astigmatism		A _s	P _o =3mW	—	18	—	μm

1) Initial values 2) All the above values are evaluated with Tottori Sanyo's measuring apparatus 3) Full angle at half maximum

Note : The above product specifications are subject to change without notice.