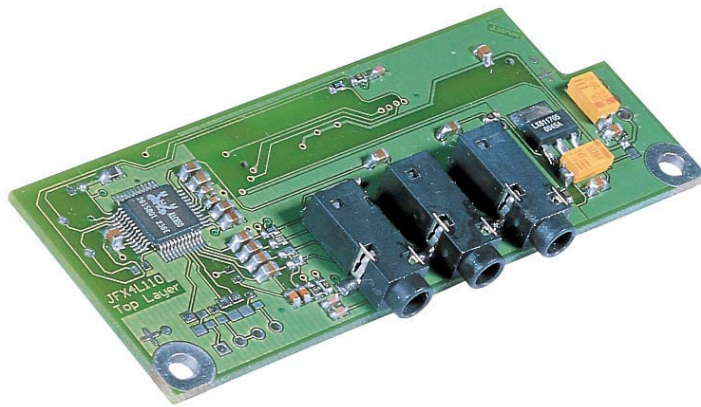


➤ JFLEX-Sound1



- Sound AC97
- cable free, customizable
- low cost Audio add-on for JReX 3.5" SBC

Product Overview

Every JREx 3.5" SBC features the interface to mount a JFLEX™.

JFLEX™ is an add-on I/O extension module that can be firmly screwed on top of every JREx without harming the JREx foot-print of the 3.5" size. The I/O functionality comes cable free with up to PCI performance at a fraction of the average price of comparable add-on solutions.

By keeping it most cable free, low cost is maintained and manual errors are minimized. Stacked on top, the JFLEX concept opens the way for immediately available, low cost, and even customizable I/O extensions.

JFLEX-Sound1 enhances JREx boards with the sound feature (AC97) and connectors for Line-In, Line-Out and MIC-In.

And that is done cable free, simply by stacking the JFLEX on top of a JREx.

...always a Jump ahead!

Technical Data

- **Sound (AC97):** Realtek ALC 650
- **Sound Interfaces 3.5 mm, jack plug:** Line-In, Line-Out, MIC-In
- **Dimensions:** 80 x 33 mm
- **Temperature:** operation: 0° to 60°C
storage: -10° to 85°C
- **Humidity:** operation: 10% to 90%
storage: 5% to 95%
(non condensing)

Article	Part.-No.	Description
JFLEX-Sound1	02053-0000-01-0	I/O extension for JREx boards with: Sound AC97 (Line-In, MIC-In and Line-Out)
JREx-GX1	02001-0000-30-1	Geode™ GX1 Processor 300MHz, VGA/LCD (18-Bit TFT)
JREx-C3	02002-0000-30-1	Ultra Low Power fanless Intel® Celeron® processor with 300MHz, VIA TwisterT chipset
JREx-P3	02002-0000-70-1	Low Power fanless Intel®Pentium® III processor with 700MHz, VIA TwisterT chipset
JREx-VE	02003-0000-66-1	VIA EDEN processor with 667MHz, VIA TwisterT chipset
JREx-VE	02003-0000-10-2	VIA C3 processor with 1.0 GHz, VIA TwisterT chipset

US/ Canada
6260 Sequence Drive
San Diego, CA 92121-4371

Tel.: (858) 677-0877
Fax: (858) 677-0898

sales@us.kontron.com

Europe, Middle East & Africa
Brunnwiesenstr. 16
94469 Deggendorf - Germany

Tel.: +49 (0)991/ 370 24-100
Fax: +49 (0)991/ 370 24-102

sales-kem@kontron.com

Asia Pacific
5F-1, 341, Sec 4, Chung Hsiao E.
Rd, Taipei, Taiwan

Tel: +886 2 2781 5791
Fax: +886 2 2741 7379

sales@kontron.com.tw

