

5V 400mA DC-DC Converter EPC1010

Features

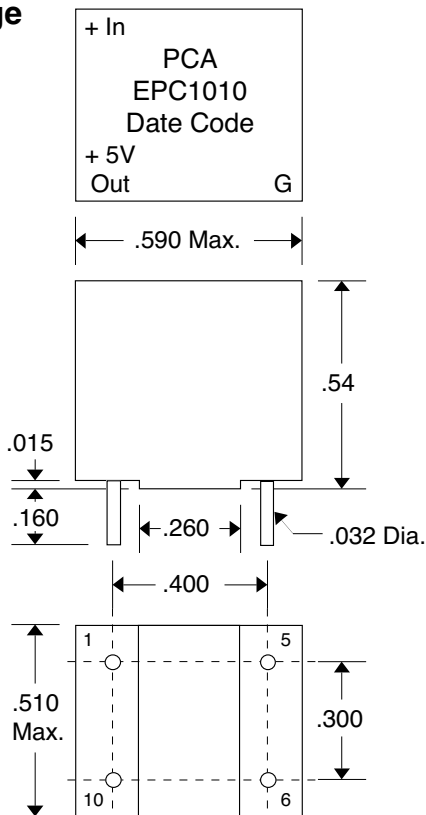
- 10V to 40V Input voltage
- Internal temporary short circuit protection
- Low quiescent current & high efficiency
- Output voltage regulated to $\pm 2\%$

Electrical Specifications

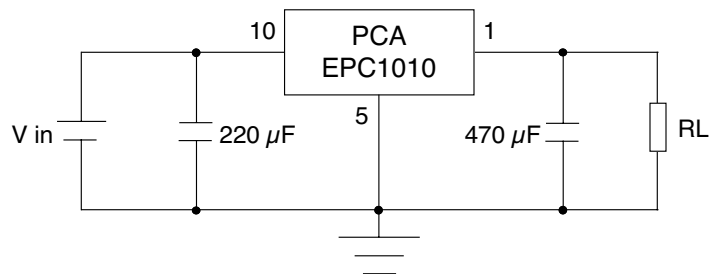
Parameters	Min.	Typ.	Max.	Unit
Input Voltage (Vin)	10		40	Volts
Output Voltage (Vo) (@ Vin = 15V to 30V, Io = 0 to 400 mA, Temp. = 25°C \pm 5°C)	4.9	5.0	5.1	Volts
Output Current (Io)	0		400	mA
Short Circuit Current Limit (@ Vin = 15V)			250	mA

Parameters	Min.	Typ.	Max.	Unit
Quiescent Current (@ Vin=15V)		3		mA
Efficiency (@ Io = 200 mA, Vin = 15V, Temp. = 25°C \pm 5°C)	70	80		%
Operating Temperature	-10	25	70	°C
Storage Temperature	-25		85	°C

Package



Test Circuit



Pin 1 = V out +
Pin 5 = Gnd
Pin 10 = V in +
Pin 6 = N.C.

*Capacitors should be mounted less than 20mm from pins