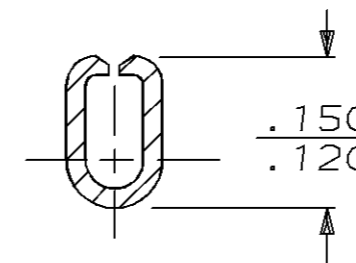
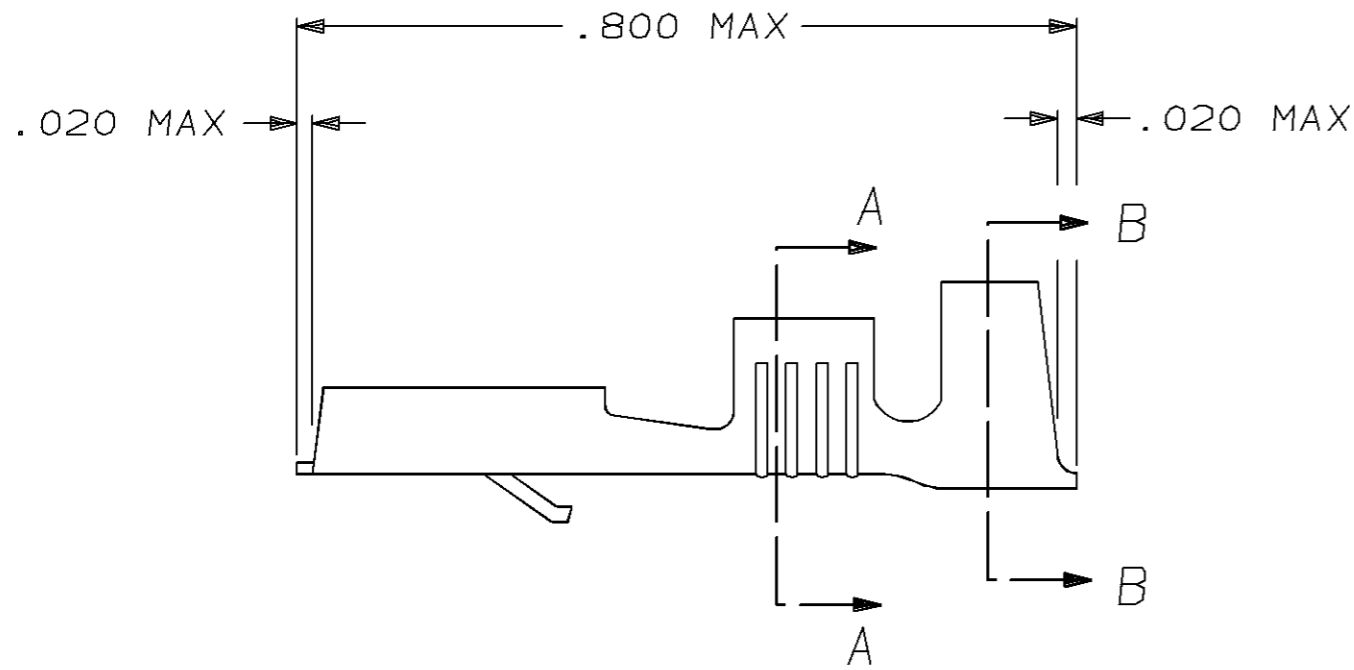


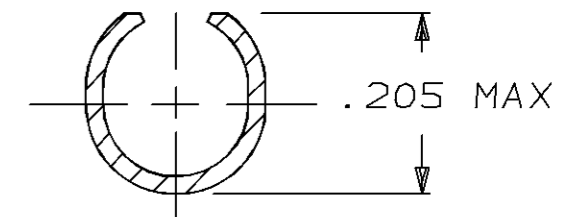
THIS DRAWING IS UNPUBLISHED. RELEASED FOR PUBLICATION, 19  
 © COPYRIGHT 19 BY AMP INCORPORATED, HARRISBURG, PA. ALL INTERNATIONAL RIGHTS RESERVED. AMP PRODUCTS MAY BE COVERED BY U.S. AND FOREIGN PATENTS AND/OR PATENTS PENDING.

LOC	DIST			REVISIONS				
AF	50	P	F	ZONE	LTR	DESCRIPTION	DATE	APPROVED
					A	OBS -3 PER 0L10-0209-96	12/13/96	JR/JG

1 - SUPPLIED IN LOOSE PIECE.



SECTION A-A



SECTION B-B

OBSOLETE	42100-3	SILVER	BRASS	.120-.160	18-14	.032 ±.001	42238-3
	42100-2	TIN	BRASS	.120-.160	18-14	.032 ±.001	42238-2
	42100-1	—	BRASS	.120-.160	18-14	.032 ±.001	42238-1
	MAKE FROM	FINISH	MATERIAL	INSULATION RANGE	WIRE SIZE	TAB THK	PART NO

UNLESS OTHERWISE SPECIFIED DIMENSIONS ARE IN INCHES TOLERANCES ON:  
 2 PL DEC ± \_\_\_\_\_  
 3 PL DEC ± .015  
 ANGLES ± \_\_\_\_\_

MATERIAL  
 .012 THK

FINISH  
 SEE ABOVE

DR 11/6/86  
 JR RUTH  
 CHK 11/6/86  
 G YETTER  
 APPD 11/6/86  
 J GILLESPIE  
 APPD 11/6/86  
 R KUZO  
 PRODUCT SPEC \_\_\_\_\_  
 APPLICATION SPEC \_\_\_\_\_  
 WEIGHT \_\_\_\_\_

**AMP** | AMP INCORPORATED  
 Harrisburg, Pa. 17105

NAME  
 .250 SERIES FASTIN - FASTON RECEPTACLE

SIZE <b>B</b>	FSCM NO 00779	DRAWING NO 42238
SCALE NTS	SHEET 1 OF 1	