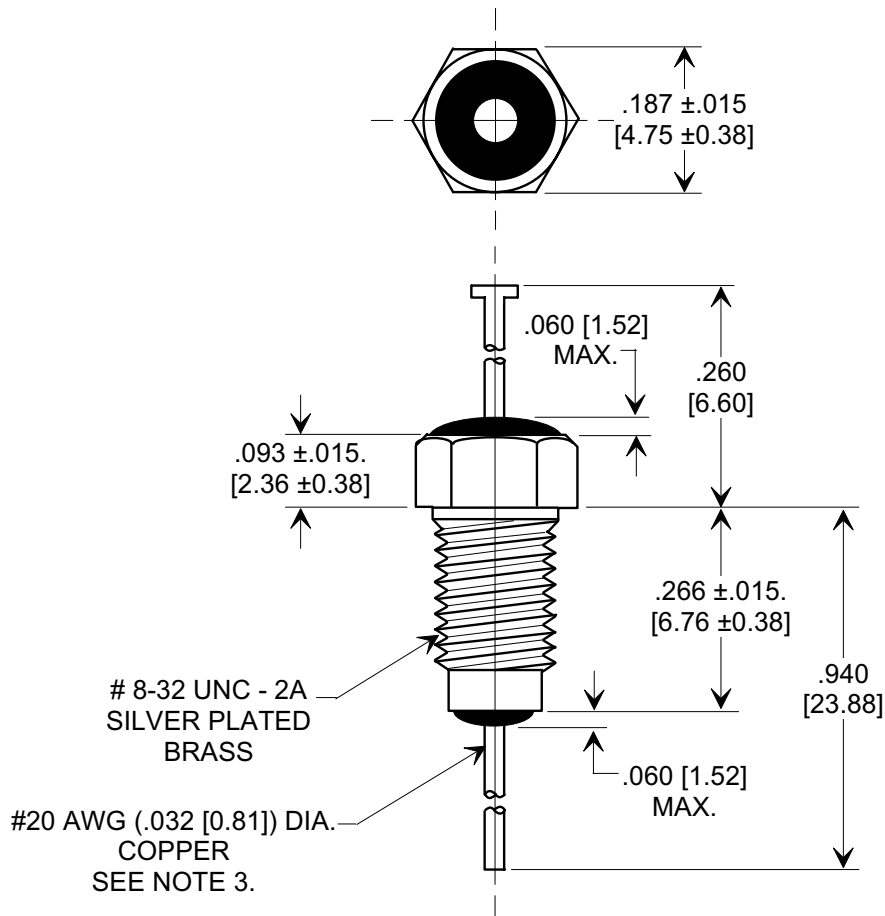
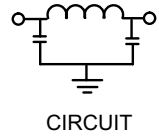
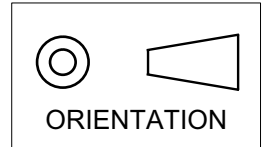


MARKETING SALES DRAWING
DIMENSIONS IN INCHES - DO NOT SCALE THIS DRAWING
DIMENSIONS IN METRIC - []

Electrical Testing
per Tusonix standard
test plans and Mil-Std-202
Test Methods.



NOTES:

- SUPPLIED WITH SILVER PLATED HEX NUT AND LOCKWASHER.
- TUSONIX STANDARD PART NUMBER: 4209-076
TUSONIX RoHS COMPLIANT PART NUMBER: 4209-076 LF.
CUSTOMER MUST SPECIFY STANDARD OR RoHS PART NUMBER WHEN ORDERING.
- LEAD FINISH: STANDARD PART #: 60/40 SOLDER PLATED. RoHS PART #: SILVER PLATED.
- PART MARKING: TRADEMARK AND VARIATION NUMBER ON HEX FLATS.
STANDARD PART: BLACK INK. RoHS PART: GREEN INK.

MIN. CAP (pF)	WORKING VOLTAGE		CURRENT	I.R. MIN. @ 100 (VDC.)	DWV (VDC)	MINIMUM NO LOAD INSERTION LOSS (dB) @ 25°C PER MIL-STD-220			
	85°C	125°C				10 MHz	100 MHz	1 GHz	10 GHz
5500	200	100	10A	10 G	400	14	55	70	70

X-2015 Rev-0	REVISION RECORD	Original Release	0	ADDED NOTES, IR, DWV & METRIC. S.M. 07-29-05	20050726-2-37	--TOLERANCES-- Unless Otherwise Specified		Title BUSHING STYLE EMI FILTER	
		C.O. 19980217-5-02				DECIMAL ± .031 [0.79]	Drawn S.M. 02-19-98		Scale NONE
		ANGLES ±				Approved J.Mc. 02-19-98			
		TUSONIX TUCSON, ARIZONA				A	4201-076		