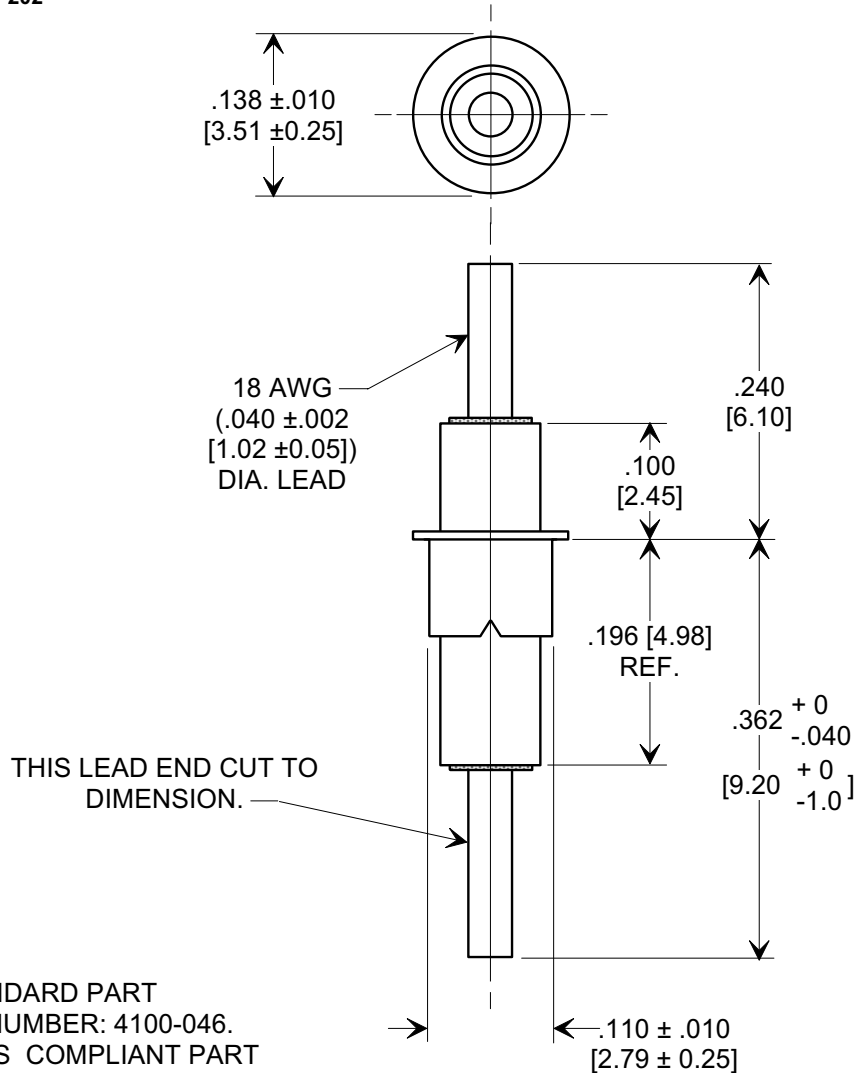
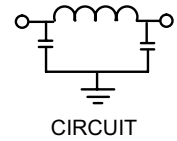
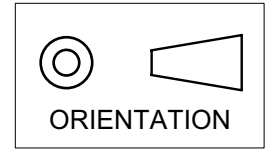


**MARKETING SALES DRAWING**  
**DIMENSIONS IN INCHES - DO NOT SCALE THIS DRAWING**  
**DIMENSIONS IN METRIC - [ ]**

Electrical Testing  
per Tusonix standard  
test plans and Mil-Std-202  
Test Methods.



**NOTES:**

- TUSONIX STANDARD PART  
NUMBER: 4100-046.  
TUSONIX RoHS COMPLIANT PART  
NUMBER: 4100-046 LF.  
CUSTOMER MUST SPECIFY STANDARD OR  
RoHS PART NUMBER WHEN ORDERING.
- LEAD FINISH: STANDARD PART #: 60/40 SOLDER PLATED.  
RoHS PART #: SILVER PLATED.
- EYELET FINISH: STANDARD PART #: 60/40 SOLDER PLATED.  
RoHS PART #: SILVER PLATED.
- PART MARKING: STANDARD, NO MARKING.  
RoHS PART: GREEN DOT ON INSULATION BAND, TYPICAL LOCATION.

MIN. CAP. pF	WORKING VOLTAGE		CURRENT Idc.	IR (MIN)	D.W.V	MINIMUM NO LOAD INSERTION LOSS (dB) AT 25°C PER MIL-STD-220			
	85°C	125°C				10 MHz	100 MHz	1 GHz	10 GHz
1500	350	200	15 A	10 G	700 VDC	5	25	60	60

X-2015 Rev-0	<b>REVISION RECORD</b>					--TOLERANCES-- Unless Otherwise Specified	Title		
	Original Release C.O.	WAS SK 8054-000. S.M. 01-29-02	<b>0</b>	DIM. REV'D.362 +0 - .040 WAS .342 ± .020 L.E. 02-01-02	<b>1</b>		<b>EYELET STYLE EMI FILTER</b>		
	<b>20020128-1-02</b>	<b>20020201-4-01</b>	<b>2</b>	ADDED NOTES. S.M. 06-07-05	<b>20050526-414</b>	DECIMAL ± .031 [0.79]	Drawn	L.E. 01-25-02	Scale 6 X
						ANGLES ±	Approved B.Mc. 01-25-02		
					<b>TUSONIX</b> TUCSON, ARIZONA	<b>A</b>	<b>4100-046</b>		