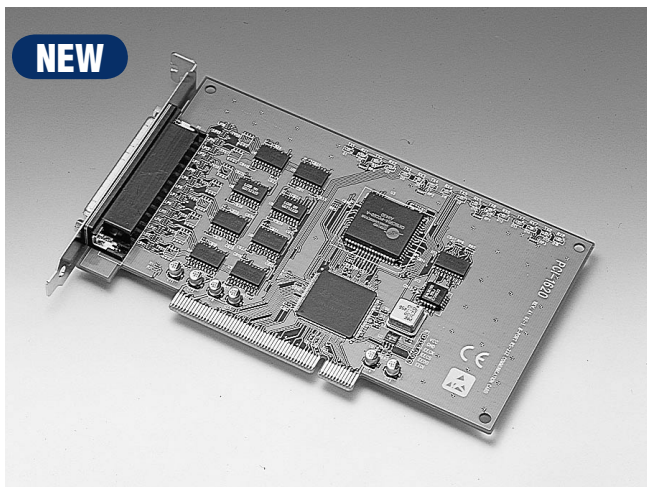


# PCI-1620A/B PCI-1620U

## 8-port RS-232 PCI Communication Card, with Surge Protection

## 8-port RS-232 Universal PCI Communication Card, with Surge Protection



CE

### Features

- PCI bus specification 2.1 compliant
- Speeds up to 921.6 Kbps
- 8-port RS-232
- I/O address automatically assigned by PCI plug-and-play
- OS supported: Windows® 95/98/NT/2000/XP, Linux
- Interrupt status register for increased performance
- Space reserved for termination resistors
- Powerful and easy-to-use utility: ICOM Tools
- Universal PCI (PCI-1620U)

### Introduction

The PCI-1620A/B is an 8-port RS-232 PCI communication card that is compatible with the PCI 2.1 bus specification. The PCI-1620A/B provides eight optional surge protected RS-232 ports, and has many functions such as high transmission speed of 921.6 Kbps, eight independent RS-232 ports, etc. The PCI-1620A/B also comes with high-performance 16PC1954 UARTs with 128-byte FIFO and 16C954 UART to reduce CPU load. Thus, the PCI-1620A/B is especially suitable for making your system reliable in multitasking environments.

PCI-1620U has an universal PCI connector that is compatible with both 3.3 V signaling and 5 V signaling. This means that PCI-1610U can not only be used in traditional systems with 5 V signaling but also newer systems with 3.3 V signaling.

To improve the performance of the system, the PCI-1620A/B allows transmission rates up to 921.6 kbps. To further increase reliability, The PCI-1620B offers surge protection technology, protecting your system from abrupt high voltage 3,000 V<sub>DC</sub>. Advantech also provides a convenient utility program, ICOM Tools, to help you test the PCI card's performance by analyzing the port status. ICOM Tools is easy to use with its menu commands and toolbar buttons, and acts as a PC-based data scope that lets you set a trigger condition, capture the communication data and monitor the signal status. ICOM Tools is applicable to all series of Advantech ICOM cards.

### Specifications

- **Bus Interface** PCI bus spec. 2.1 compliant
- **All ports use the same IRQ assigned by PCI plug-and-play**
- **Data Bits** 5, 6, 7, 8
- **Stop Bits** 1, 1.5, 2
- **Parity** None, even, odd
- **Communication Controller** 16PC1954+16C954
- **Speed (bps)** 50 ~ 921.6 K
- **Data Signals** TxD, RxD, RTS, CTS, DTR, DSR, DCD, GND (for RS-232)
- **Surge Protection** 3000 V<sub>DC</sub> (PCI-1620B)  
2500 V<sub>DC</sub> (PCI-1620U)
- **Power Consumption**
  - Typical** +12 V: 120 mA                      +5 V: 180 mA
  - Max** +12 V: 150 mA                      +5 V: 220 mA
- **Power Requirement** ±12 V
- **Dimensions** 185 x 100 mm
- **Operating Temp.** 0 ~ 65° C (refer to IEC 68-2-1,2) (32 ~ 149° F)
- **Operation Humidity** 5 ~ 95 % Relative Humidity, non-condensing (refer to IEC 68-2-3)
- **Storage Temperature** -25 ~ 85° C (-13 ~ 185° F)

### Ordering Information

- **PCI-1620A** 8-port RS-232 PCI COMM Card
- **PCI-1620B** 8-port RS-232 PCI COMM Card, w/surge protection
- **PCI-1620U** 8-port RS-232 universal PCI COMM card w/surq protection
- **Opt8C** 8-port RS-232 cable with male DB-62 to DB-25 connector (1 m)
- **Opt8H** 8-port RS-232 cable with male DB-62 to DB-9 connector (1 m)

1  
IPPC & AWS

2  
TPC

3  
FPM

4  
ATM

5  
DA&C

6  
ePCI

7  
ADAM-3000

8  
eConnectivity

9  
ICOM

10  
Software

11  
UNO-2000/3000

12  
VBOX

13  
ADAM-4000

14  
ADAM-5000

15  
ADAM-6000

16  
ADAM-8000

www.DataSheet4U.com