

## FEATURES AND SPECIFICATIONS

### Features and Benefits

- Sizes 8 to 64 circuits
- Polarized slot
- Low profile
- High temperature material version available, contact factory
- For alternate product, see 90709

### Reference Information

UL File No.: E29179 (H)  
 CSA File No.: LR19980A  
 Mates With: .050" pitch ribbon cable connectors  
 Designed In: Inches

### Electrical

Voltage: 250V  
 Current: 3.0A  
 Contact Resistance: 15mΩ max.  
 Dielectric Withstanding Voltage: 600V  
 Insulation Resistance: 1000 MΩ min.

### Mechanical

Contact Retention to Housing: 1.8kg (4 lb)  
 Durability: 50 cycles Gold

### Physical

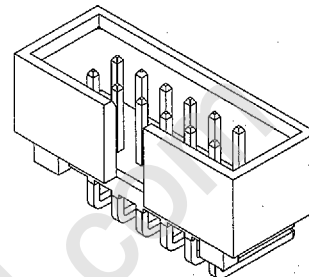
Housing: Glass-filled polyester, UL 94V-0  
 Contact: Brass  
 Plating: See Table  
 Temperature: -40 to +105°C



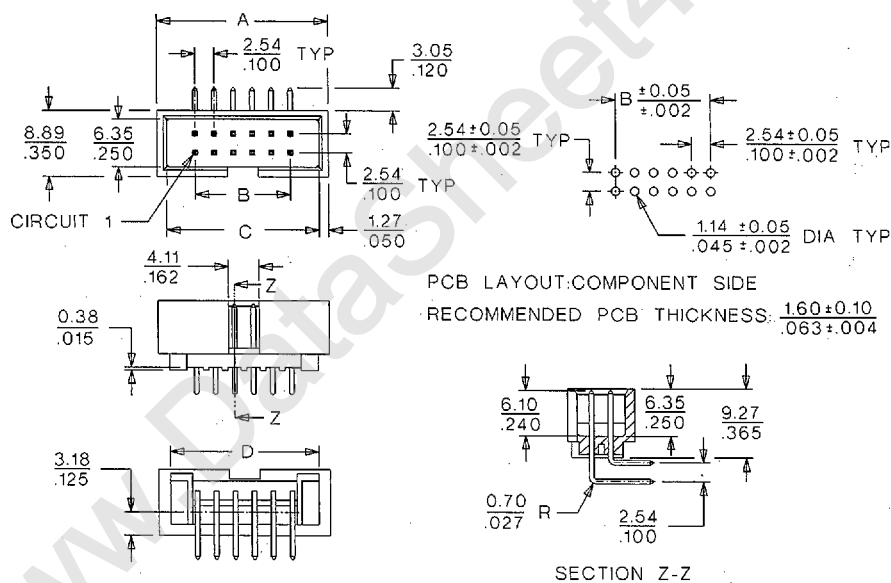
# 2.54mm (.100") Pitch C-Grid® Shrouded Header

## 70247

## Dual Row, Low Profile Right Angle



**Not For Use With C-Grid III™ Components**



## ORDERING INFORMATION AND DIMENSIONS

Circuits	Order No.			Dimension			
	15μ" Gold	20μ" Gold	30μ" Gold	A	B	C	D
8	70247-0801	70247-0800	70247-0802	17.78 (.700)	7.62 (.300)	15.25 (.600)	14.73 (.580)
10	70247-1001	70247-1000	70247-1002	20.32 (.800)	10.16 (.400)	17.78 (.700)	17.27 (.680)
12	70247-1201	70247-1200	70247-1202	22.86 (.900)	12.70 (.500)	20.32 (.800)	19.81 (.780)
14	70247-1401	70247-1400	70247-1402	25.40 (1.000)	15.24 (.600)	22.86 (.900)	22.35 (.880)
16	70247-1601	70247-1600	70247-1602	27.94 (1.100)	17.78 (.700)	25.40 (1.000)	24.89 (.980)
20	70247-2001	70247-2000	70247-2002	33.02 (1.300)	22.86 (.900)	30.28 (1.200)	29.97 (1.180)
24	70247-2401	70247-2400	70247-2402	38.10 (1.500)	27.94 (1.100)	35.56 (1.400)	35.05 (1.380)
26	70247-2601	70247-2600	70247-2602	40.64 (1.600)	30.48 (1.200)	38.10 (1.500)	37.59 (1.480)
30	70247-3001	70247-3000	70247-3002	45.72 (1.800)	35.56 (1.400)	43.18 (1.700)	42.67 (1.680)
34	70247-3401	70247-3400	70247-3402	50.80 (2.000)	40.64 (1.600)	48.26 (1.900)	47.75 (1.880)
40	70247-4001	70247-4000	70247-4002	58.42 (2.300)	48.26 (1.900)	55.88 (2.200)	55.37 (2.180)
44	70247-4401	70247-4400	70247-4402	63.50 (2.500)	53.34 (2.100)	60.96 (2.400)	60.45 (2.380)
48	70247-4801	70247-4800	70247-4802	68.58 (2.700)	58.42 (2.300)	66.04 (2.600)	65.53 (2.500)
50	70247-5001	70247-5000	70247-5002	71.12 (2.800)	60.96 (2.400)	68.58 (2.700)	68.07 (2.680)
56	70247-5601	70247-5600	70247-5602	78.74 (3.100)	68.58 (2.700)	76.20 (3.000)	75.69 (2.980)
60	70247-6001	70247-6000	70247-6002	83.82 (3.300)	73.66 (2.900)	81.28 (3.200)	80.77 (3.180)
64	70247-6401	70247-6400	70247-6402	88.90 (3.500)	78.74 (3.100)	86.36 (3.400)	85.85 (3.380)
72	70247-7201	70247-7200	70247-7202	99.06 (3.900)	88.90 (3.500)	96.52 (3.800)	96.01 (3.780)