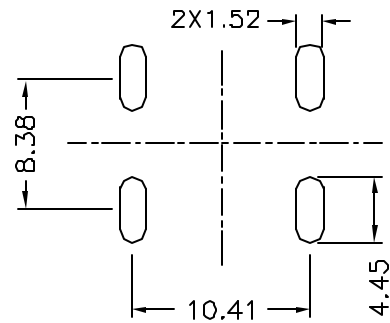
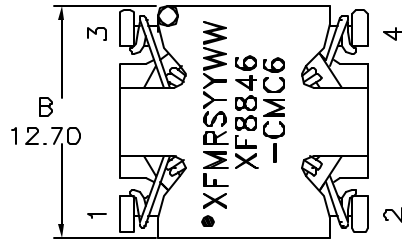
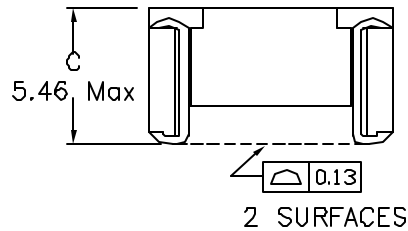
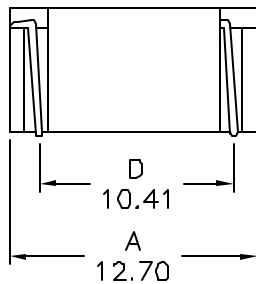


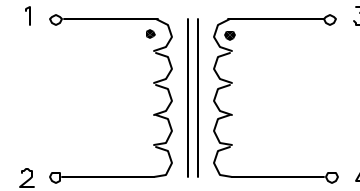
1. Mechanical Dimensions:



Suggested pad layout



2. Schematic:



3. Electrical Specification:

OCL: 0.884mH±25% @10KHz 1.0V

DCR: 0.110 OHMS MAX

Rated Current (For 55°C Rise): 1.63 A

HIPOT: 1000Vrms (wdg. to wdg.)

Notes:

1. Solderability: Leads shall meet MIL-STD-202G, Method 208H for solderability.
2. Flammability: UL94V-0
3. ASTM oxygen Index: > 28%
4. Insulation System: Class F 155°C. UL file E151556
5. Operating Temperature Range: All listed parameters are to be within tolerance from -40°C to +85°C
6. Storage Temperature Range: -55°C to +125°C
7. Aqueous wash compatible
8. SMD Lead Coplanarity: ±0.004"(0.102mm)
9. Electrical and mechanical specifications 100% tested
10. RoHS Compliant Component

DOC REV D/11

PROPRIETARY

Document is the property of XFMR5 Group & is not allowed to be duplicated without authorization.

XFMR5 Inc. www.XFMR5.com		Title: Common Mode Choke	
UNLESS OTHERWISE SPECIFIED TOLERANCES: .xx ±0.25 Dimensions in MM	P/N: XF8846-CMC6		REV. D
	DWN.	Juan mao	Sep-26-08
	CHK.	YK liao	Sep-26-08
SHEET 1 OF 1	APP	Joe Huff	Sep-26-08