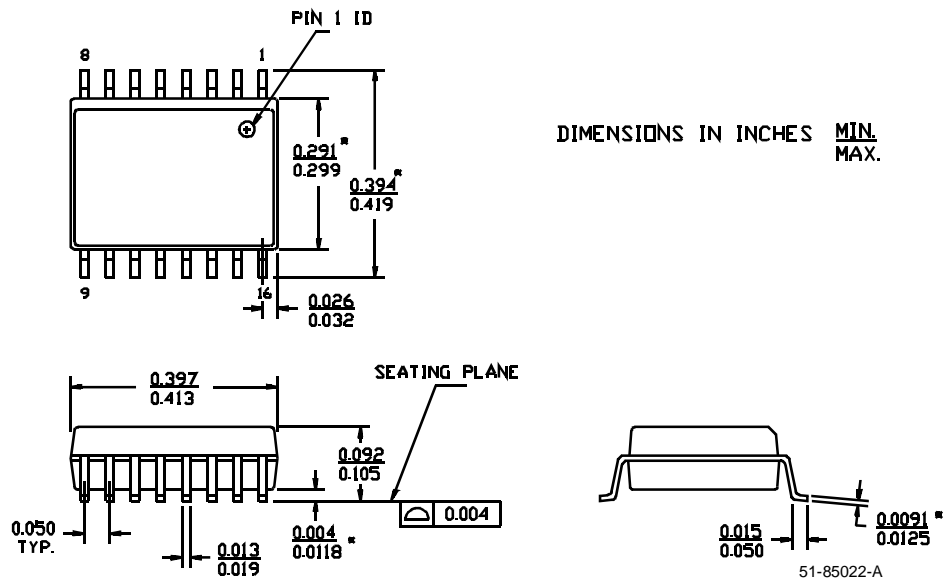
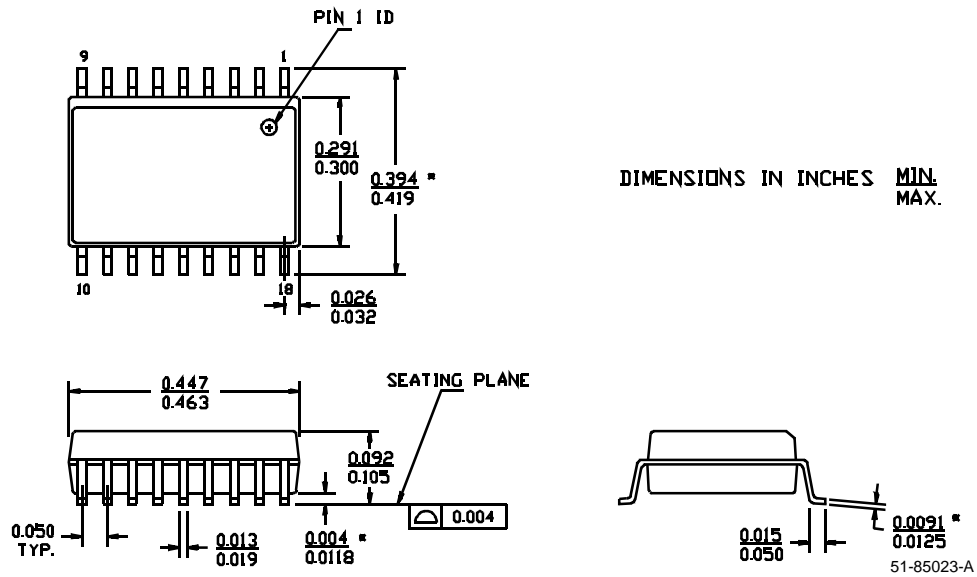
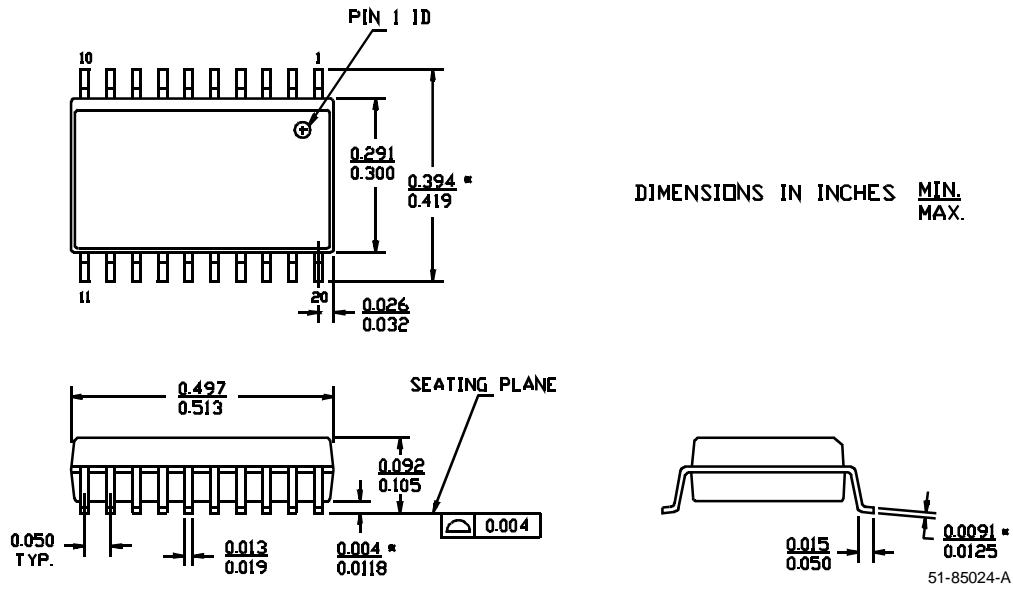
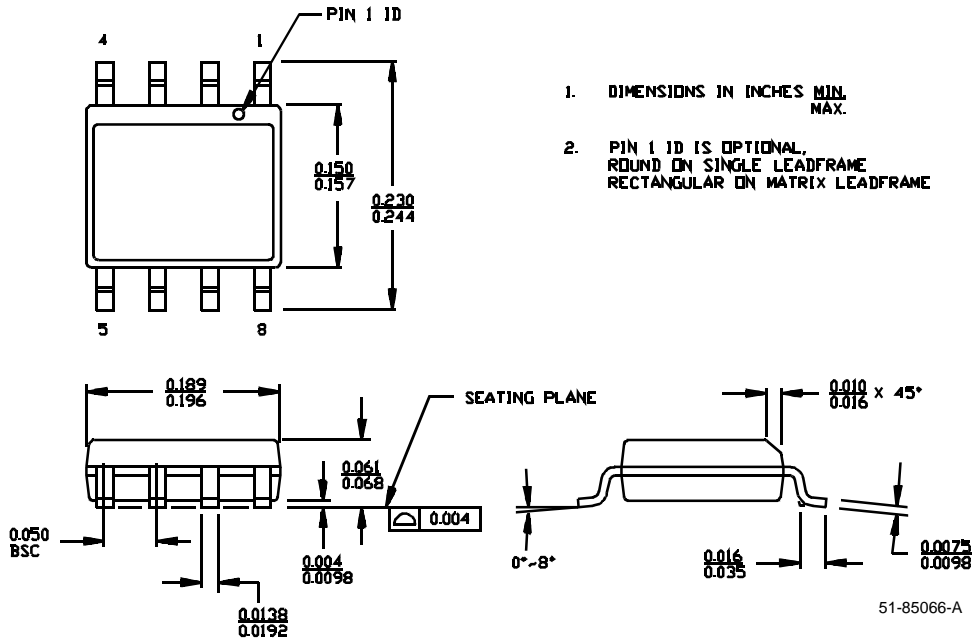
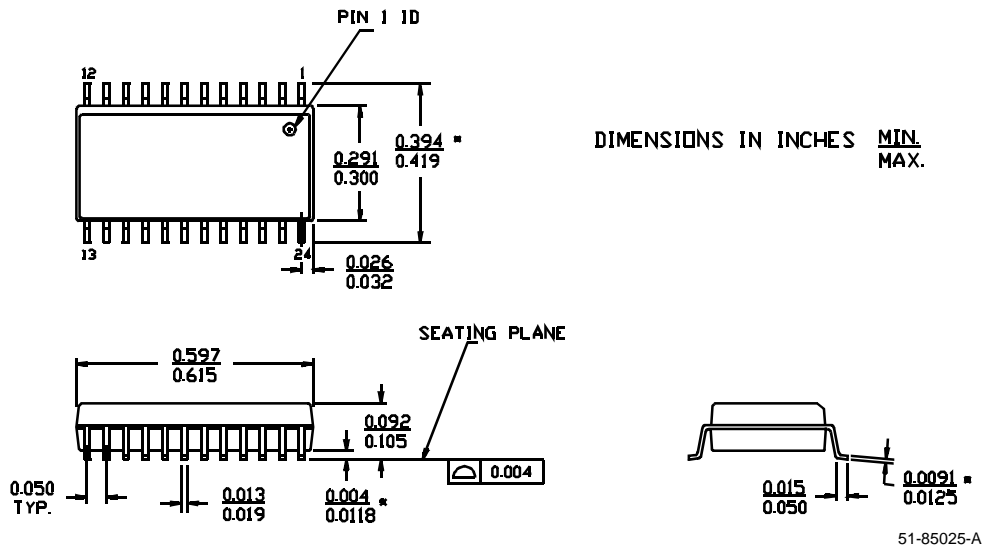
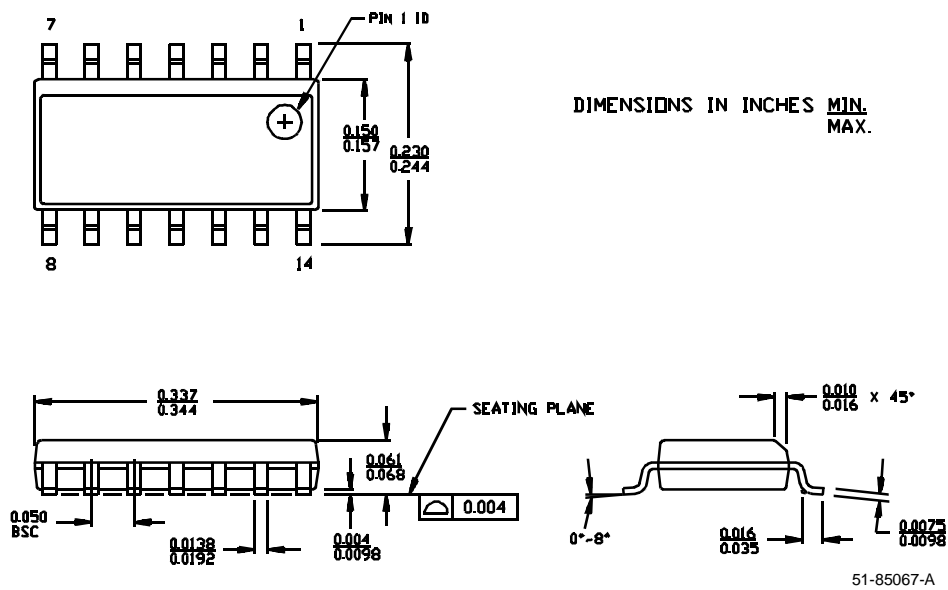
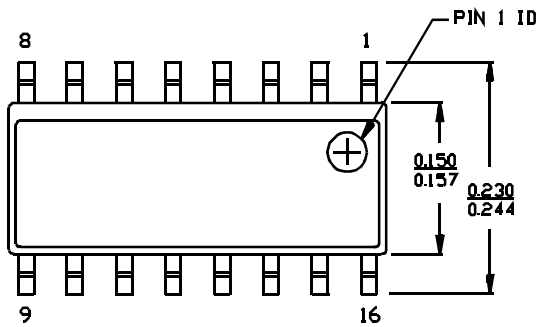
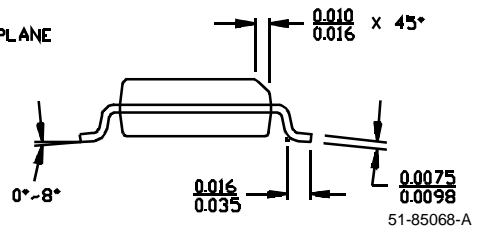
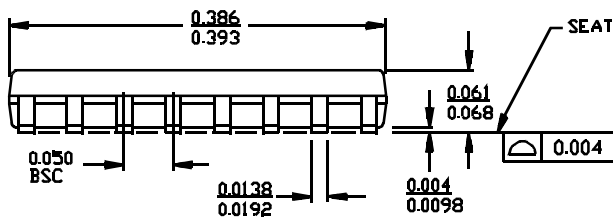


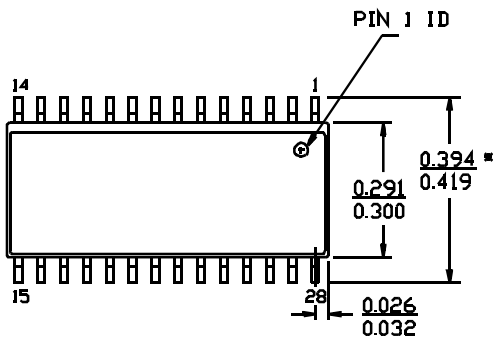
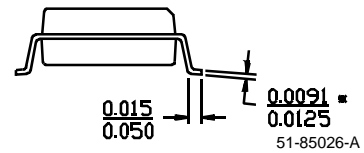
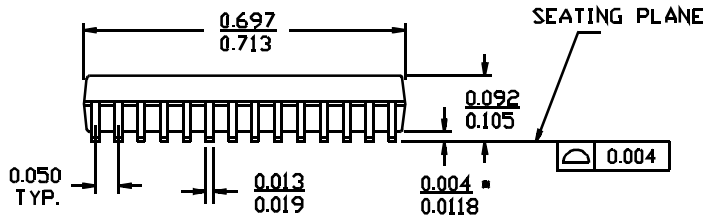
Plastic Small Outline ICs
16-Lead (300-Mil) Molded SOIC S1

18-Lead (300-Mil) Molded SOIC S3


20-Lead (300-Mil) Molded SOIC S5

8-Lead (150-Mil) SOIC S8


24-Lead (300-Mil) Molded SOIC S13

14-Lead (150-Mil) SOIC S14


16-Lead (150-Mil) Molded SOIC S16

 DIMENSIONS IN INCHES MIN.
MAX.


51-85068-A

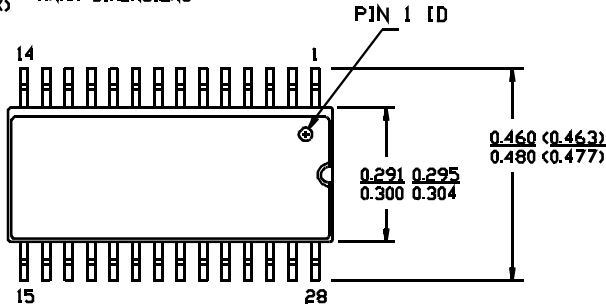
28-Lead (300-Mil) Molded SOIC S21

 DIMENSIONS IN INCHES MIN.
MAX.


51-85026-A

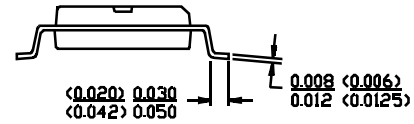
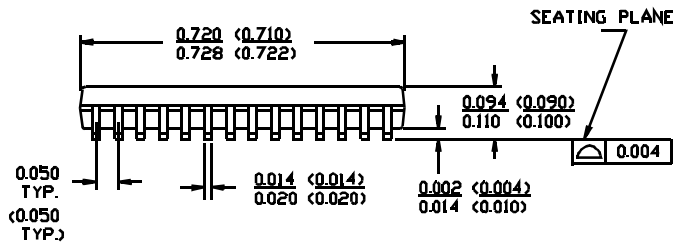
28-Lead 450-Mil (300-Mil Body Width) SOIC S22

.XXX = HYUNDAI DIMENSIONS
.XXX

(.XXX) = ANAM DIMENSIONS
(.XXX)

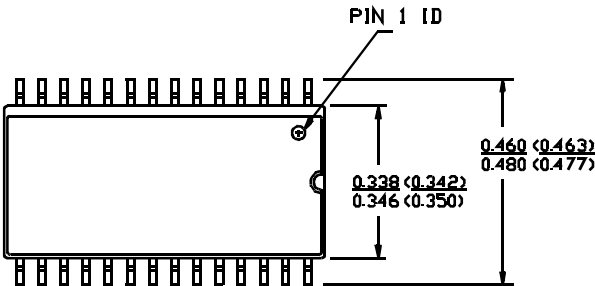


DIMENSIONS IN INCHES MIN.
MAX.



51-85073-A

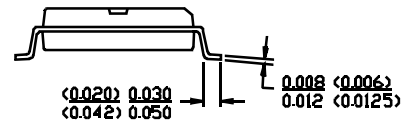
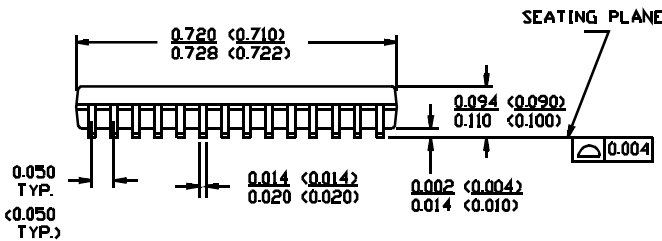
28-Lead (330-Mil) SOIC S23



DIMENSIONS IN INCHES MIN.
MAX.

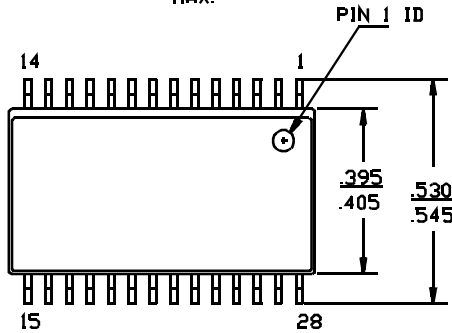
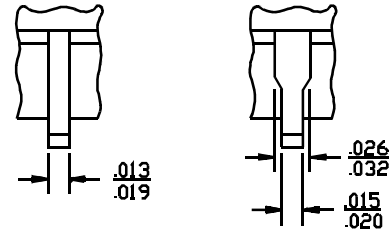
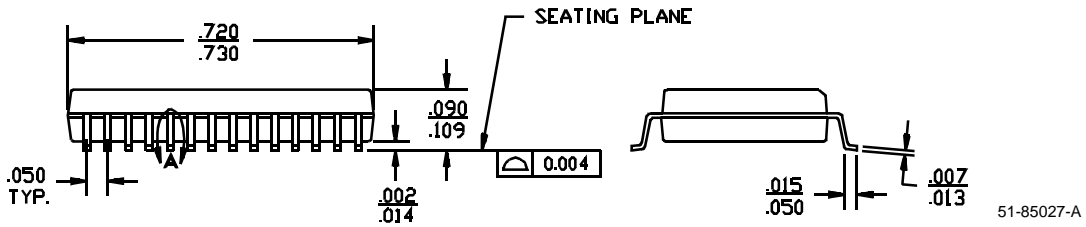
.XXX = HYUNDAI DIMENSIONS
.XXX

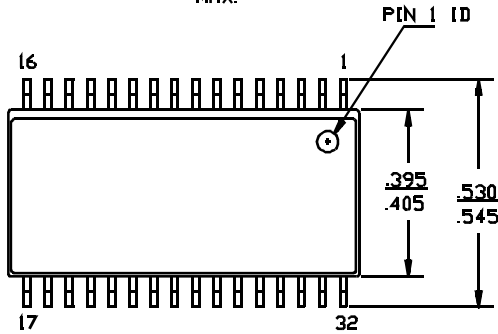
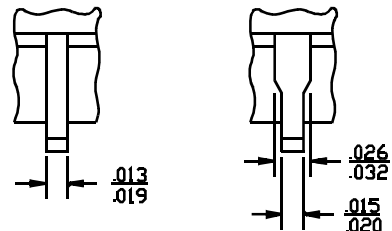
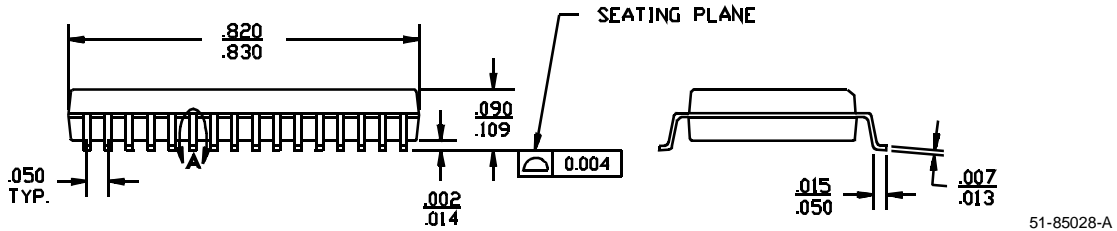
(.XXX) = ANAM DIMENSIONS
(.XXX)



51-85058

28-Lead (400-Mil) Molded SOIC S28

 DIMENSIONS IN INCHES MIN.
MAX.

DETAIL A
EXTERNAL LEAD DESIGN

OPTION 1
OPTION 2

32-Lead (400-Mil) Molded SOIC S33

 DIMENSIONS IN INCHES MIN.
MAX.

DETAIL A
EXTERNAL LEAD DESIGN

OPTION 1
OPTION 2


32-Lead (450 MIL) Molded SOIC S34

