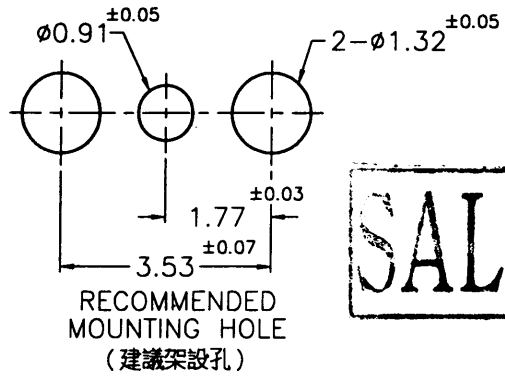
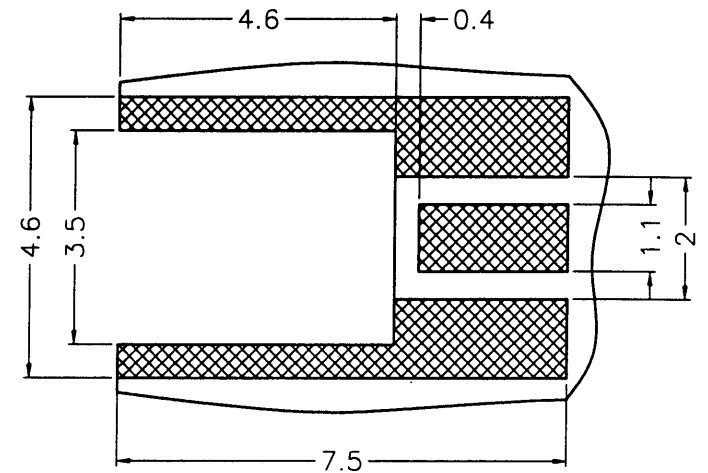
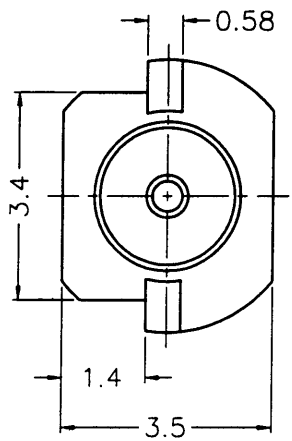
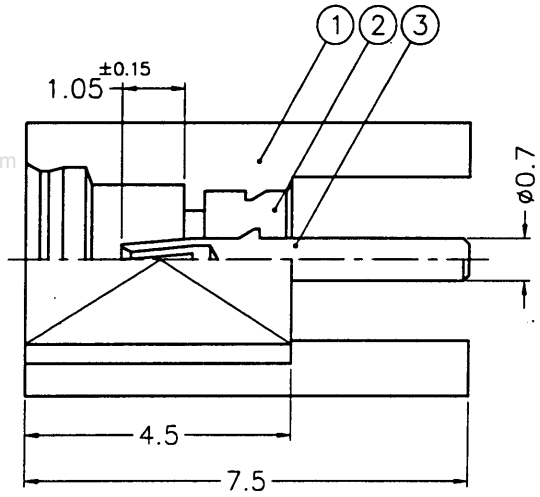


| REVISIONS |      |   |  |
|-----------|------|---|--|
| ISS       | ZONE | DESCRIPTION\PER REQUEST\DATE              |  |
| B         | A-1  | NO.1 WAS CHANGED\RD-DM88030901K\03-09-99' |  |
| C         | A-1  | NO.1 WAS CHANGED\RD-DM91070801H\07-08-02' |  |

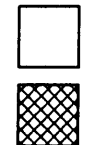


REMARK : 1. BETWEEN NO.1 AND NO.2 MUST WITHSTAND A 2.3 LBS MIN. SEPARATED FORCE.  
 2. BETWEEN NO.2 AND NO.3 MUST WITHSTAND A 2.3 LBS MIN. SEPARATED FORCE.  
 (1. 零件1及零件2至少須承受2.3磅的脫離力量)  
 (2. 零件2及零件3至少須承受2.3磅的脫離力量)

**SALES**

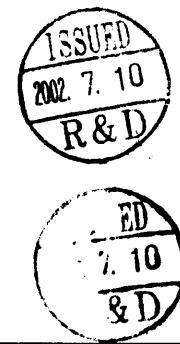


RECOMMENDED MOUNTING PATTERN (建議架設模型)



1. MAX. PATTERN THICKNESS=1.6mm

- NOTES: FINISH (PLATING THICKNESS IN MICRO-INCHES)  
 1. BRASS PER QQ-B-626  
 2. GOLD PL. 3 MIN. THICK OVER NICKEL PL. 100 MIN. THICK OVER COPPER STRIKE  
 3. BERYLLIUM COPPER PER QQ-C-530  
 4. GOLD PL. 30 MIN. THICK OVER NICKEL PL. 100 MIN. THICK OVER COPPER STRIKE  
 5. TEFLON MIL-P-19468



| DIMENSIONS ARE IN MILLIMETERS         |  |  |  |  | PART NO.                              |  |  |  |
|---------------------------------------|--|--|--|--|---------------------------------------|--|--|--|
| UNLESS OTHERWISE SPECIFIED TOLERANCES |  |  |  |  | APPROVED                              |  |  |  |
| 0.5-6 = ±0.2                          |  |  |  |  | DATE 07-08-02'                        |  |  |  |
| 6-30 = ±0.4                           |  |  |  |  | CHECKED                               |  |  |  |
| 30-120 = ±0.6                         |  |  |  |  | DATE 07-08-02'                        |  |  |  |
| 120-315 = ±1                          |  |  |  |  | DRAWN                                 |  |  |  |
| 315-1000 = ±1.6                       |  |  |  |  | DATE 07-08-02'                        |  |  |  |
| 1000-2000 = ±2.4                      |  |  |  |  | FILE NO. CA DWG/MMCX/6251S1/50/3GT30G |  |  |  |
|                                       |  |  |  |  | <b>Amphenol - Kai Jack</b>            |  |  |  |
|                                       |  |  |  |  | TAINAN TAIWAN                         |  |  |  |
|                                       |  |  |  |  | TITLE                                 |  |  |  |
|                                       |  |  |  |  | MMCX EDGE CARD MOUNT JACK             |  |  |  |
|                                       |  |  |  |  | DRAWING NO.                           |  |  |  |
|                                       |  |  |  |  | KJ-MMCX6251S1-3GT30G-50               |  |  |  |
|                                       |  |  |  |  | ITEM NO.                              |  |  |  |
|                                       |  |  |  |  | 096251AAC02GE5F                       |  |  |  |

| NO. | DESCRIPTION | MATERIAL | FINISH  | Q'TY | DRAWING NO.      |
|-----|-------------|----------|---------|------|------------------|
| 3   | CONTACT PIN | NOTE 3   | NOTE 4  | 1    | MMCX6251N1-3     |
| 2   | INSULATOR   | NOTE 5   | NATURAL | 1    | MMCX6251N1-2T-50 |
| 1   | BODY        | NOTE 1   | NOTE 2  | 1    | MMCX6251S1-1-C   |