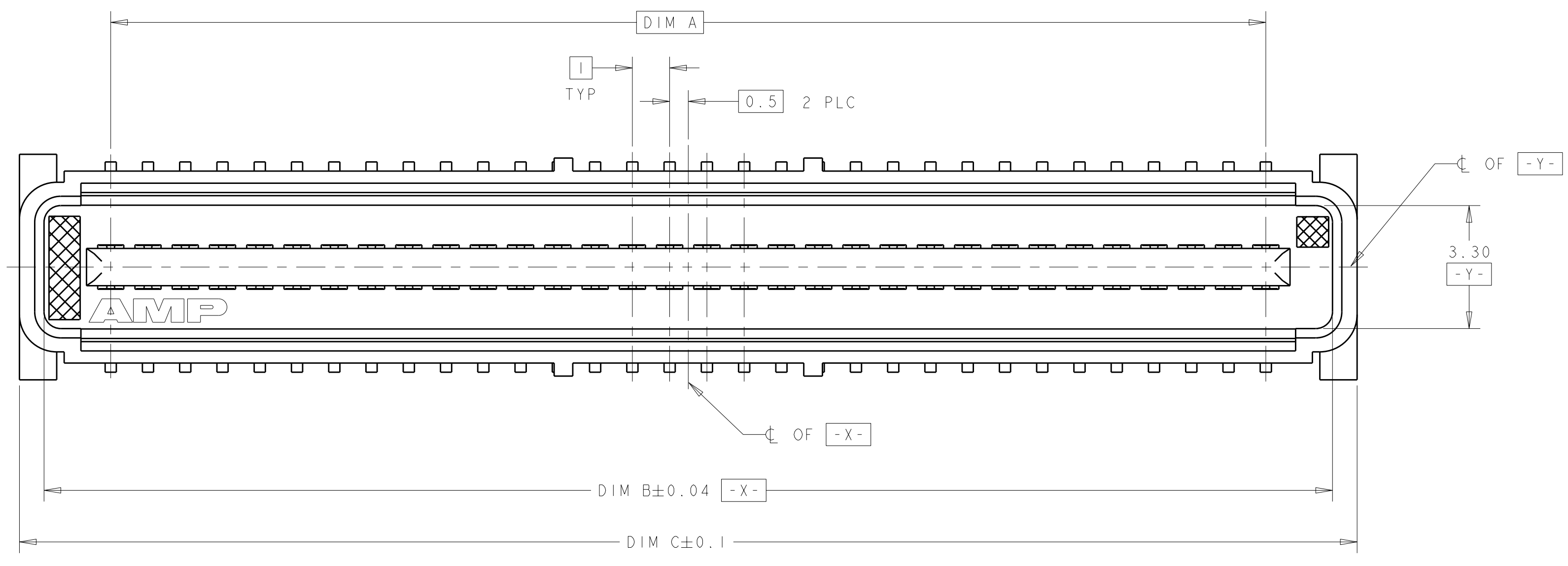
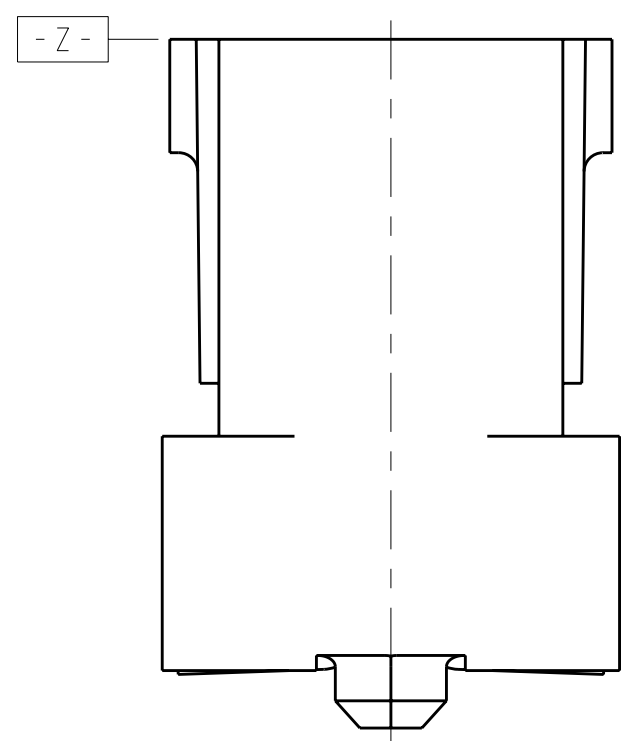
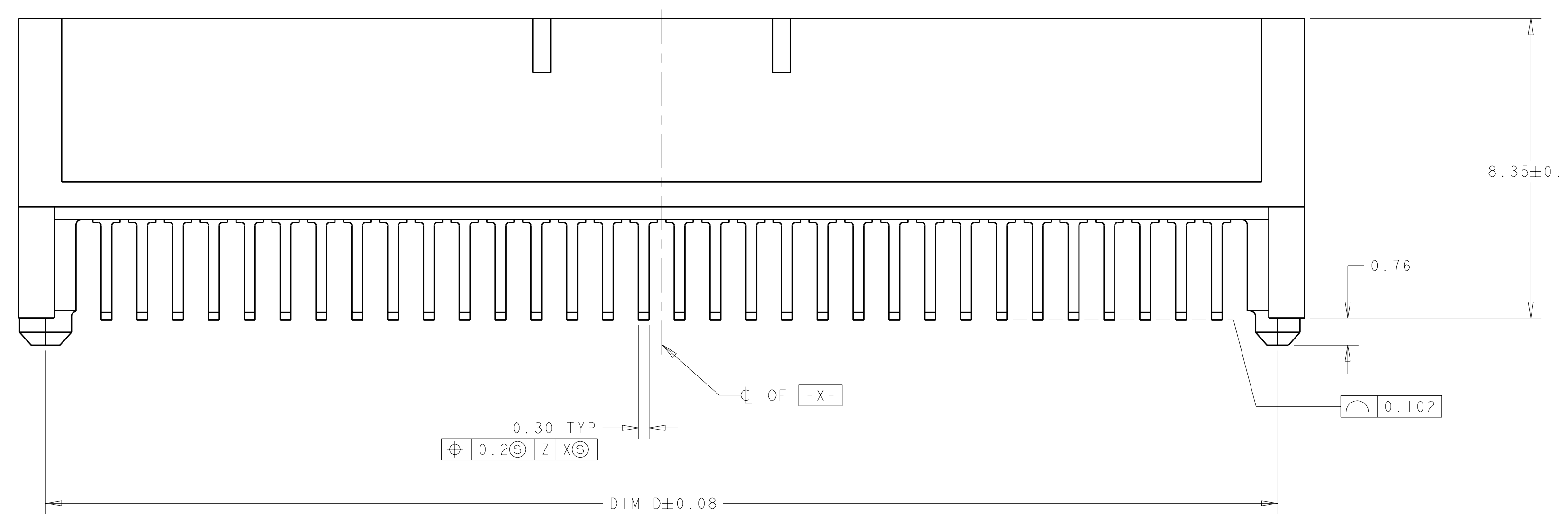


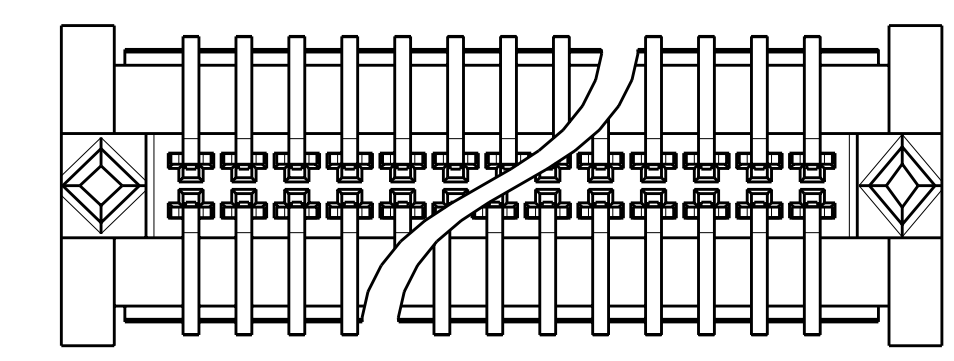
LOC	DIST	REV	DATE	BY	APP'D
AD	00	0	30SEP2004	BC	RW
		A	10JUL2006	DH	DB
		AI	14SEP2009	AEG	HM



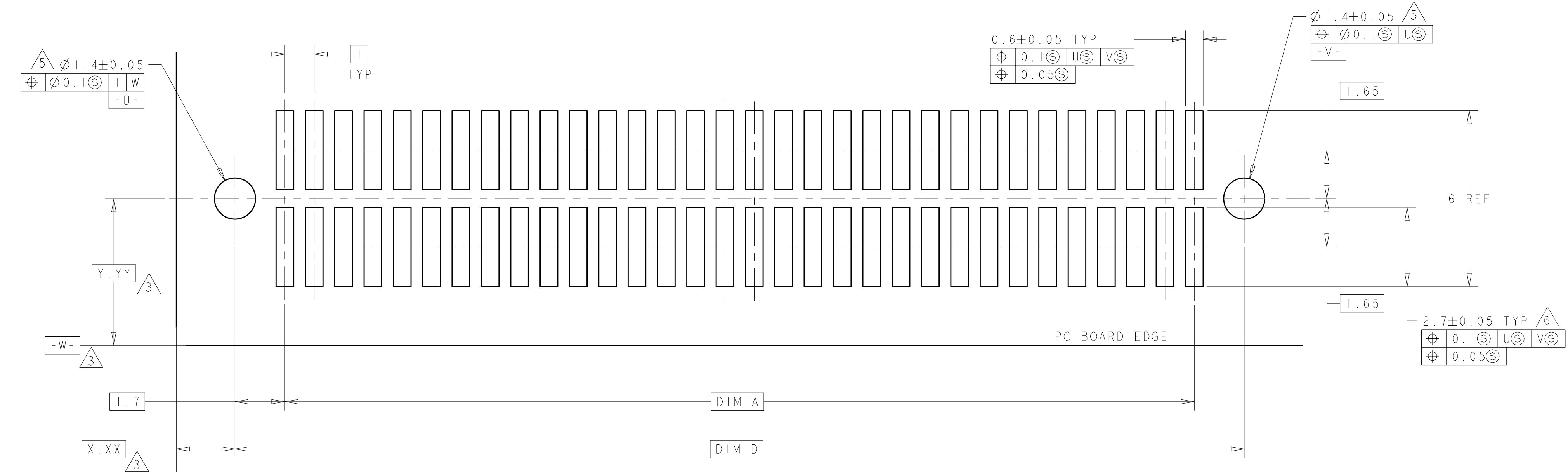
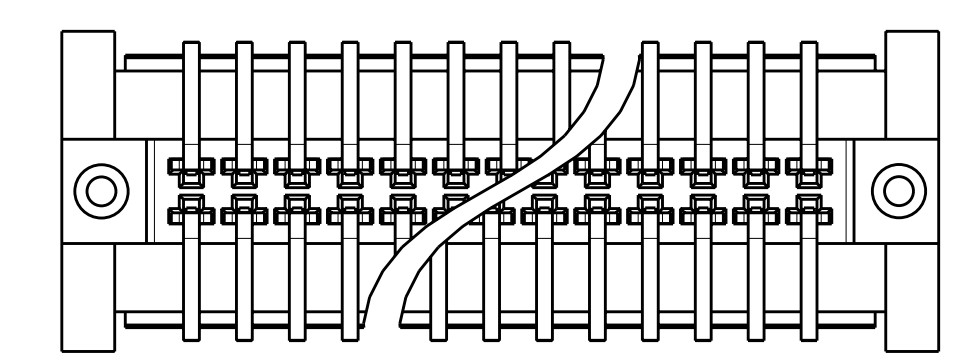
1. HOUSING MATERIAL: LIQUID CRYSTAL POLYMER. COLOR; BLACK. CONTACT MATERIAL: PHOSPHOR BRONZE.
2. CONTACT FINISH: NICKEL UNDERPLATE ALL OVER. MATING SURFACES PLATED TO MEET PLI PERFORMANCE REQUIREMENTS OF INDUSTRY SPECIFICATION EIA-700AAAB, SOLDER TAILS PLATED TIN.
3. DATUM LOCATIONS AND BASIC DIMENSIONS TO BE ESTABLISHED BY THE CUSTOMER. CONSULT AMP ENGINEERING WHEN PLACING MULTIPLE CONNECTORS ON A PC BOARD.
4. PACKAGED IN TAPE ON REELS PER EIA-841.
5. 1.5 MIN DIAMETER HOLE SHOULD BE USED IF USING POST STYLE "A" AND PLACING ON PCB WITH VACUUM PLACEMENT EQUIPMENT.
6. SHORTER SOLDER LANDS MAY BE USED PER EIA 700AAAB, HOWEVER 2.7 LENGTH ASSURES OPTIMUM SOLDER FILLET.
7. CONTACT FINISH: 0.00381 MINIMUM MATTE TIN PER ASTM B 545 ON SOLDER AREA, 0.00127 MINIMUM GOLD PER ASTM B 488 ON MATING AREA, BOTH OVER 0.00127 MINIMUM NICKEL PER SAE-AMS-QQ-N-290 ON ENTIRE CONTACT.
8. SQUARE AND DIAMOND SHAPED POSTS
9. ROUND SHAPED POSTS



8 STYLE A POSTS



9 STYLE B POSTS



RECOMMENDED PC BOARD LAYOUT

POST STYLE	FINISH	DIM D	DIM C	DIM B	DIM A	STACK HGTS	POS	PART NO
9	7	44.4	45.9	44.58	41	10, 12, 13, 15	84	3-5120527-2
9	7	34.4	35.9	34.58	31	10, 12, 13, 15	64	3-5120527-1
9	2	44.4	45.9	44.58	41	10, 12, 13, 15	84	2-5120527-2
9	2	34.4	35.9	34.58	31	10, 12, 13, 15	64	2-5120527-1
8	7	44.4	45.9	44.58	41	10, 12, 13, 15	84	1-5120527-2
8	7	34.4	35.9	34.58	31	10, 12, 13, 15	64	1-5120527-1
8	2	44.4	45.9	44.58	41	10, 12, 13, 15	84	5120527-2
8	2	34.4	35.9	34.58	31	10, 12, 13, 15	64	5120527-1

DIMENSIONS: mm TOLERANCES UNLESS OTHERWISE SPECIFIED: 9 PLC ± 1 PLC ±0.03 2 PLC ±0.003 4 PLC ± ANGLES ±0°30'		DIMENSIONS: mm TOLERANCES UNLESS OTHERWISE SPECIFIED: 9 PLC ± 1 PLC ±0.03 2 PLC ±0.003 4 PLC ± ANGLES ±0°30'		DIMENSIONS: mm TOLERANCES UNLESS OTHERWISE SPECIFIED: 9 PLC ± 1 PLC ±0.03 2 PLC ±0.003 4 PLC ± ANGLES ±0°30'		DIMENSIONS: mm TOLERANCES UNLESS OTHERWISE SPECIFIED: 9 PLC ± 1 PLC ±0.03 2 PLC ±0.003 4 PLC ± ANGLES ±0°30'		DIMENSIONS: mm TOLERANCES UNLESS OTHERWISE SPECIFIED: 9 PLC ± 1 PLC ±0.03 2 PLC ±0.003 4 PLC ± ANGLES ±0°30'	
MATERIAL: SEE TABLE		FINISH: SEE TABLE		WEIGHT: -		CUSTOMER DRAWING		DWN: B. CARBO CHK: R. WERTZ APP'D: R. WERTZ PRODUCT SPEC: 502-1079 APPLICATION SPEC: 114-25045 SCALE: 10:1	
Tyco Electronics Corporation Harrisburg, PA 17105-3608		Tyco Electronics Corporation Harrisburg, PA 17105-3608		NAME: PLUG ASSY, 1.0mm FH(IEEE 1386) CONNECTOR		SIZE: CAGE CODE DRAWING NO: A100779C=5120527		RESTRICTED TO: - SHEET 1 OF 1 REV AI	