

NOTES:

- Material:
1-1 Housing:LCP,Black,UL94V-0.
1-2 Terminal:Phosphor Bronze.
- Plating:
2-1 Under-Plate Nickel All Over.
2-2 Plate Gold In Contact Area.
2-3 Plate Tin In Tail Zone.
- Coplanarity:0.12 Max.
- Support SM Card/MS/MS Pro/SD Card/MMC/xD Card.
- The Connector With The Floated Mechanism?
If SMC Inserted, XD/ SD/ MMC Will Be Unable To Inset The Slot .
(MS To Be Allowed). If Any One Of xD/SD/MMC/MS Inserted ,
Any Other Card Will Be Unable To Insert The Slot .
- Coplanarity:0.12 Max.

NOTE:

100051FB066□□00ZA

- Selective Plating
S1-05u"Min.Gold in contact area/
100u"Min.Tin in solder area.
S2-Gold flash in contact area/
100u"Min.Tin in solder area.
S3-10u"Min.Gold in contact area/
100u"Min.Tin in solder area.
S4-15u"Min.Gold in contact area/
100u"Min.Tin in solder area.
S5-30u"Min.Gold in contact area/
100u"Min.Tin in solder area.
S6-50u"Min.Gold in contact area/
100u"Min.Tin in solder area.

2	TERMINAL	C5210-EH		Gold/Tin plated
1	PLASTIC	LCP	BLACK	UL94V-0
NO.	DESCRIPTION	MATERIAL	COLOR	REMARK

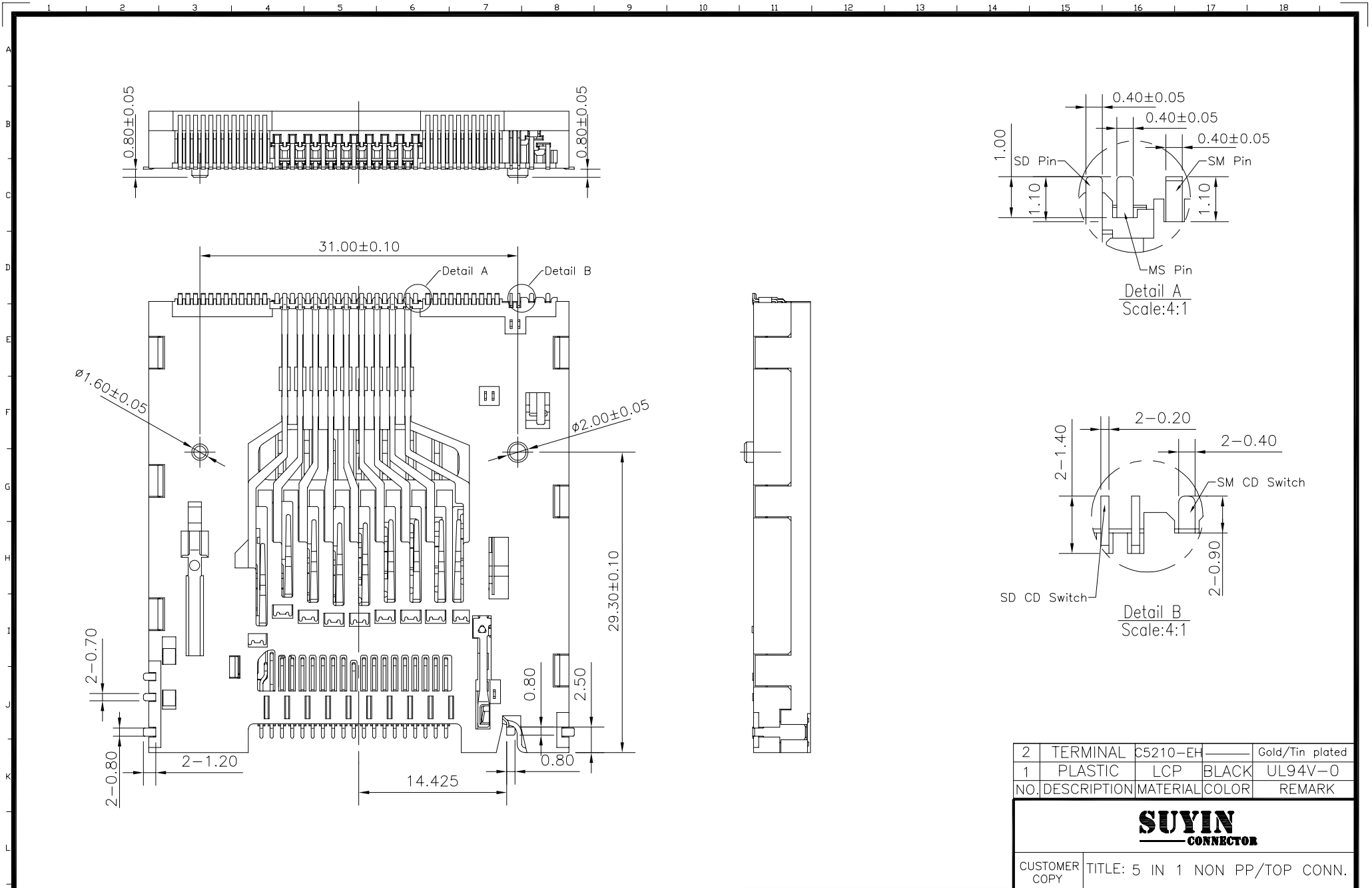
SUYIN
CONNECTOR

CUSTOMER COPY TITLE: 5 IN 1 NON PP/TOP CONN.

PART NO.	100051FB066SX00ZA
PART NO. (OLD)	
DRAWING NO.	C ING 100051FB066SX00ZA
SCALE	1:1
UNIT	mm
A4	⊕

Angle	±2°	DRAW	
30 ~	±0.50	DESIGN	
10 ~ 30	±0.30	CHECK	
~ 10	±0.15	APPRO.	
GENERAL TOLERANCE UNLESS OTHERWISE NOTED			

ECN (DCN) NO.	REV	DATE	DESCRIPTION	CHANGE	APPRO.
	PO		NEW		



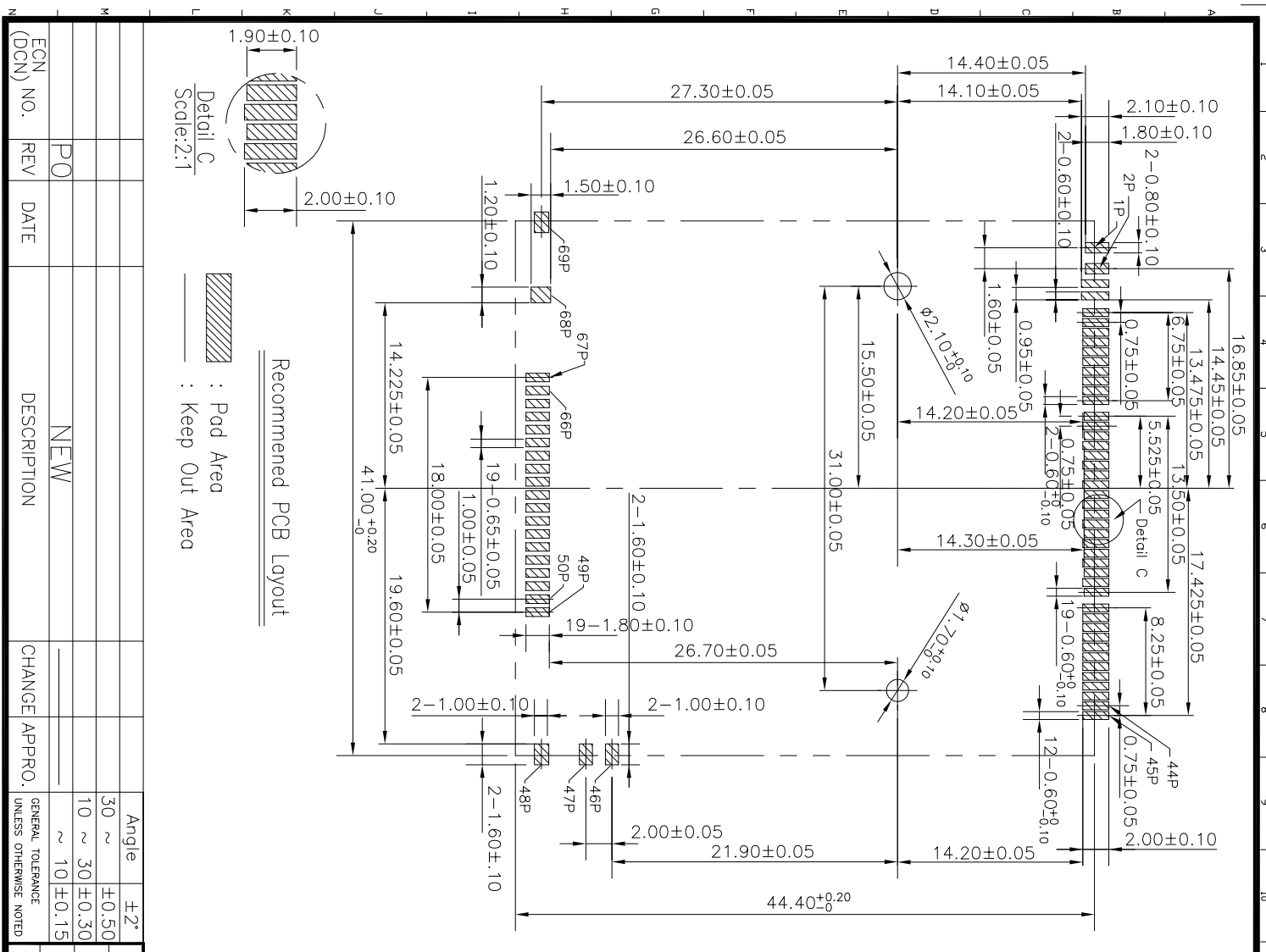
2	TERMINAL	C5210-EH		Gold/Tin plated
1	PLASTIC	LCP	BLACK	UL94V-0
NO.	DESCRIPTION	MATERIAL	COLOR	REMARK

SUYIN
CONNECTOR

CUSTOMER COPY TITLE: 5 IN 1 NON PP/TOP CONN.

PART NO.	100051FB066SX00ZA
PART NO. (OLD)	
DRAWING NO.	C ING 100051FB066SX00ZA
SCALE	1:1
UNIT	mm
A4	⊕

ECN (DCN) NO.	REV	DATE	DESCRIPTION	CHANGE	APPRO.	GENERAL TOLERANCE UNLESS OTHERWISE NOTED	APPRO.
	PO		NEW			Angle ±2°	DRAW
						30 ~ ±0.50	DESIGN
						10 ~ 30 ±0.30	CHECK
						~ 10 ±0.15	APPRO.



ECN (DCN)	NO.	REV	DATE	DESCRIPTION	CHANGE	APPRO.	GENERAL TOLERANCE UNLESS OTHERWISE NOTED
		PO		NEW			
							Angle ±2°
							30 ~ ±0.50
							10 ~ ±0.30
							~ 10 ±0.15

Pod No.	Pin Assignment	Pod No.	Pin Assignment	Pod No.	Pin Assignment
1P	SM-CD-1(CD)	24P	SD-04P(VDD)	47P	SM-WP-2(Signal GND)
2P	SM-CD-2(Signal GND)	25P	MS-06P(INS)	48P	Clip(GND)
3P	SD-COM(Signal GND)	26P	SD-03P(VSS)	49P	XD-01P(CD)
4P	SD-CD(CD)	27P	MS-07P(DAT3)	50P	XD-01P(GND)
5P	SM-11P(-CD)	28P	SD-02P(CMD)	51P	XD-02P(R/-B)
6P	SM-12P(Vcc)	29P	MS-08P(SCLK)	52P	XD-03P(-RE)
7P	SM-10P(GND)	30P	SD-01P(CD/DAT3)	53P	XD-04P(-CE)
8P	SM-13P(D4)	31P	MS-09P(Vcc)	54P	XD-05P(CLE)
9P	SM-09P(D03)	32P	SD-09P(DAT2)	55P	XD-06P(ALE)
10P	SM-14P(D5)	33P	MS-10P(VSS)	56P	XD-07P(-WE)
11P	SM-08P(D2)	34P	SM-17P(LVD)	57P	XD-08P(-WP)
12P	SM-15P(D6)	35P	SM-06P(D0)	58P	XD-09P(GND)
13P	SM-07P(D1)	36P	SM-18P(GND)	59P	XD-10P(D0)
14P	SM-16P(D7)	37P	SM-05P(-WP)	60P	XD-11P(D1)
15P	MS-01P(VSS)	38P	SM-19P(R/-B)	61P	XD-12P(D2)
16P	SD-08P(DAT1)	39P	SM-04P(-WE)	62P	XD-13P(D3)
17P	MS-02P(BS)	40P	SM-20P(-RE)	63P	XD-14P(D4)
18P	SD-07P(DAT0)	41P	SM-03P(ALE)	64P	XD-15P(D5)
19P	MS-03P(DAT1)	42P	SM-21(-CE)	65P	XD-16P(D6)
20P	SD-06P(VSS)	43P	SM-02P(CLE)	66P	XD-17P(D7)
21P	MS-04P(DAT0)	44P	SM-22P(Vcc)	67P	XD-18P(Vcc)
22P	SD-05P(CLK)	45P	SM-01P(GND)	68P	SD-WP(WP)
23P	MS-05P(DAT2)	46P	SM-WP-1(WP)	69P	Clip(GND)

Switch States

Card State	Switch State	SD Card	SM Card
Without Card Or MS/XD Card Inset	Card Detect Switch	3P/4P	1P/2P
SM Card Inserted Write Enable	Write Protection Switch	3P/68P	46P/47P
SM Card Inserted Write Protect		Open	Open
SD Card Inserted Write Enable		Open	Open
SD Card Inserted Write Protect		Open	Open
MMC Card Inserted		Close	Open

NO.	DESCRIPTION	MATERIAL	COLOR	REMARK
1				
2				

SUYIN
CONNECTOR

CUSTOMER TITLE: 5 IN 1 NON PP/TOP CONN. LAYOUT DRAWING
PART NO. 100051FB066SX00ZA
DRAWING NO. 100051FB066SX00ZA
SCALE 1:1 UNIT mm A4