

Power Supplies

DC to DC Converters

Insulation Type

CE-20 Series

For LAN ISO8802-3 10BASE2/5

SHAPES AND DIMENSIONS

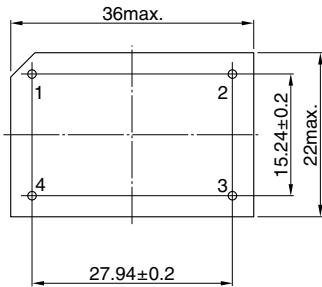


Fig.1

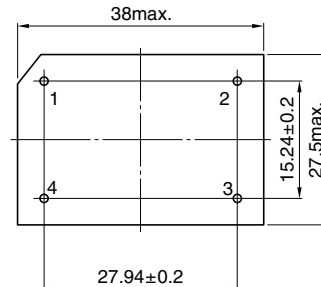
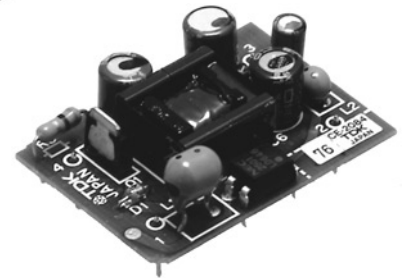
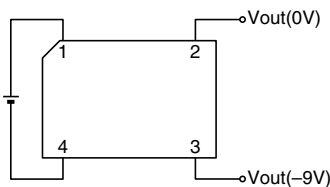


Fig.2

Dimensions in mm

CIRCUIT DIAGRAM



COMMON SPECIFICATIONS

Auxiliary functions			
Overcurrent protection		Yes	
Remote ON-OFF		No	
Temperature range	Operating(°C)	0 to +70	
	Storage(°C)	-20 to +80	
Humidity range	Operating(%RH)	20 to 95	
	Storage(%RH)	[Maximum wet-bulb temperature: 38°C, without dewing]	
Warranty period		1 year	

SPECIFICATIONS AND STANDARDS

Part No.		CE-2054	CE-2074	CE-2084	CE-2094
Maximum output power	W	1.8	1.8	1.8	1.8
Input conditions					
Input voltage E _{dc}	V	4.5 to 5.5	10 to 15.75	4.5 to 5.5	10 to 15.75
Efficiency*1	%	60min.	68min.	68min.	68min.
Output characteristics					
Output voltage E _{dc}	V	9	9	9	9
Maximum output current	mA	200	200	200	200
Total variation*2	%	±5	±5	±5	±5
Ripple noise E _{p-p} *2	mV	200typ.	200typ.	200typ.	200typ.
Withstand voltage E _{ac}	V	500	500	2,000	2,000
Shapes and dimensions		Fig.1	Fig.1	Fig.2	Fig.2
Weight	g	6	6	8	8

*1 Typical input voltage, maximum output current.

*2 Total variation and output ripple are determined under the conditions listed below.

CE-2054, CE-2084 : V_{in}=4.5 to 5.5V, I_o=50 to 200mA, T_a=0 to +70°C

CE-2074, CE-2094 : V_{in}=10 to 15.75V, I_o=50 to 200mA, T_a=0 to +70°C

PRECAUTIONS

- Input fuse
A fuse should be connected to the input with a current rating 3 times that of the standard(normal) input current.
- An electrolytic capacitor is used for this product. When using this product for a long time, the life should be taken into consideration.

• All specifications are subject to change without notice.