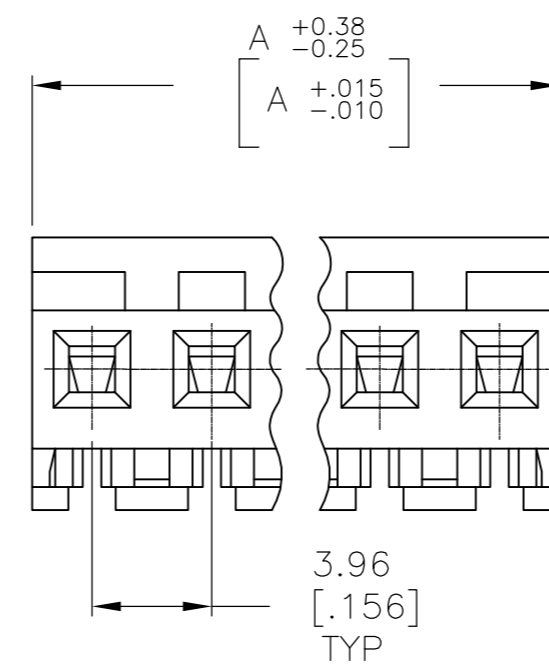
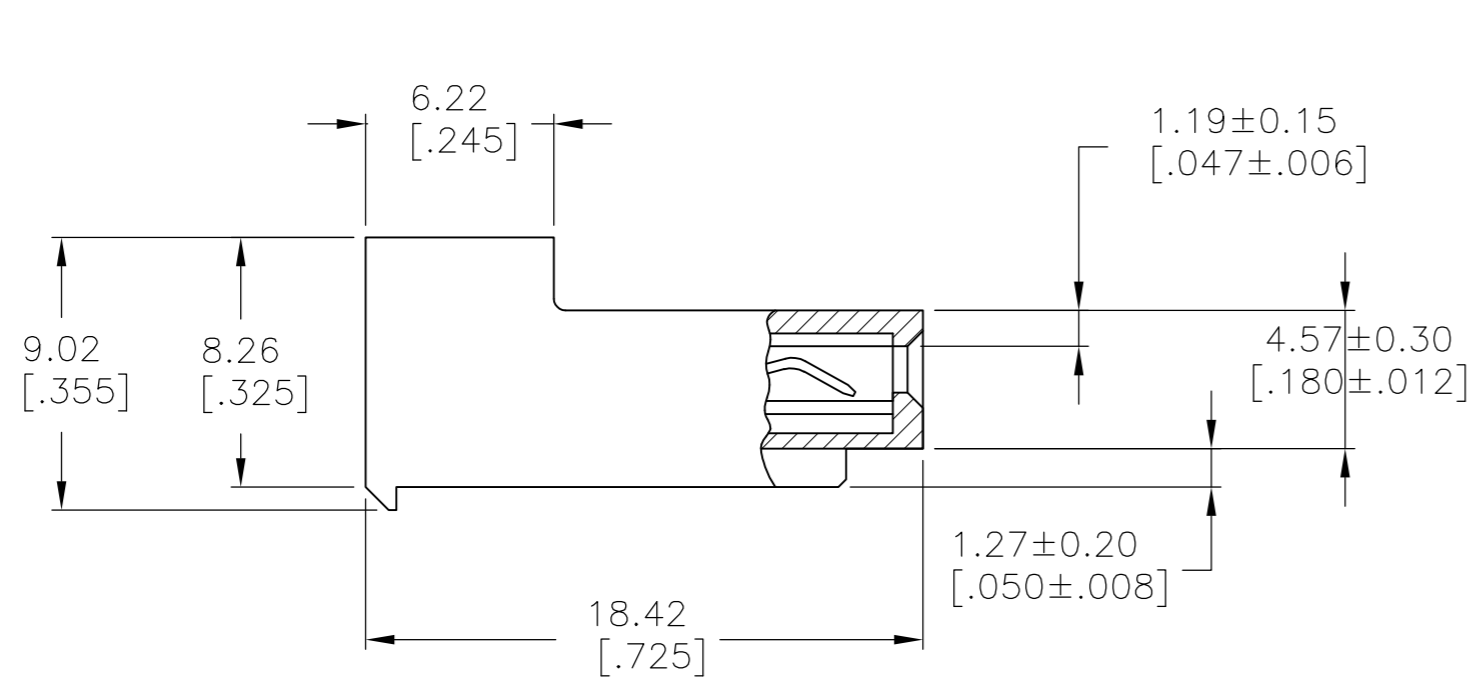
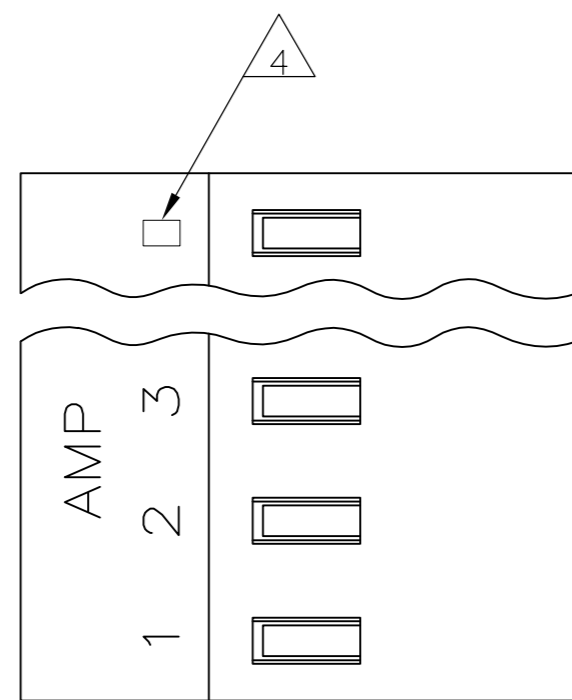


THIS DRAWING IS UNPUBLISHED. RELEASED FOR PUBLICATION  
 © COPYRIGHT BY TYCO ELECTRONICS CORPORATION. ALL RIGHTS RESERVED.

LOC	DIST	REVISIONS					
CM	OO	P	LTR	DESCRIPTION	DATE	DWN	APVD
		T1		ECO-07-028233	28NOV07	KW	DB
		T2		REVISED PER ECO-10-000443	15JAN10	KK	AEQ



95.10[3.744]	24	5-640432-4
91.13[3.588]	23	5-640432-3
87.17[3.432]	22	5-640432-2
83.21[3.276]	21	5-640432-1
79.25[3.120]	20	5-640432-0
75.29[2.964]	19	4-640432-9
71.32[2.808]	18	4-640432-8
67.36[2.652]	17	4-640432-7
63.40[2.496]	16	4-640432-6
59.44[2.340]	15	4-640432-5
55.47[2.184]	14	4-640432-4
51.51[2.028]	13	4-640432-3
47.55[1.872]	12	4-640432-2
43.59[1.716]	11	4-640432-1
39.62[1.560]	10	4-640432-0
35.66[1.404]	9	3-640432-9
31.70[1.248]	8	3-640432-8
27.74[1.092]	7	3-640432-7
23.77[.936]	6	3-640432-6
19.81[.780]	5	3-640432-5
15.85[.624]	4	3-640432-4
11.89[.468]	3	3-640432-3
7.92[.312]	2	3-640432-2
95.10[3.744]	24	2-640432-4
91.13[3.588]	23	2-640432-3
87.17[3.432]	22	2-640432-2
83.21[3.276]	21	2-640432-1
79.25[3.120]	20	1-640432-0
75.29[2.964]	19	1-640432-9
71.32[2.808]	18	1-640432-8
67.36[2.652]	17	1-640432-7
63.40[2.496]	16	1-640432-6
59.44[2.340]	15	1-640432-5
55.47[2.184]	14	1-640432-4
51.51[2.028]	13	1-640432-3
47.55[1.872]	12	1-640432-2
43.59[1.716]	11	1-640432-1
39.62[1.560]	10	1-640432-0
35.66[1.404]	9	640432-9
31.70[1.248]	8	640432-8
27.74[1.092]	7	640432-7
23.77[.936]	6	640432-6
19.81[.780]	5	640432-5
15.85[.624]	4	640432-4
11.89[.468]	3	640432-3
7.92[.312]	2	640432-2
DIM A	NO. OF CIRCUITS	PART NO.

- 1 MATERIAL: CONNECTOR - NYLON UL94-V2 (YELLOW)  
CONTACTS - 0.30[.012] THICK COPPER ALLOY  
(BRIGHT TIN-LEAD 0.00203[.000080] MIN. THICK FOR CONTACTS 640432-2 THRU 2-640432-4).  
(MATTE WHISKER MITIGATED TIN 0.00203[.000080] MIN. THICKNESS OVER NICKEL UNDERPLATE FOR 3-640432-2 THRU 5-640432-4).
- 2. CONTACTS ACCEPT 20 AWG WIRE WITH 2.41[.095] MAX INSULATION DIAMETER.
- 3. CONTACTS MUST ACCEPT 1.14±0.03[.045] POST AND REMAIN LOCKED IN POSITION.
- 4 IDENTIFICATION NUMBER FOR LAST CIRCUIT MAY NOT APPEAR ON ALL ASSEMBLIES.
- 5. DIMENSIONS IN BRACKETS ARE IN INCHES.
- 6. HOUSING FEATURES ARE: CLOSED END WITH LOCKING RAMP.
- 7 OBSOLETE PARTS: OBSOLETE CIS STREAMLINING PER D.RENAUD/D.SINISI

**METRIC**

THIS DRAWING IS A CONTROLLED DOCUMENT.		DWN S. CARPENTER 13AUG2003	Tyco Electronics Corporation Harrisburg, Pa 17105-3608	
DIMENSIONS: mm [INCHES]		CHK D. BOSSI 13AUG2003	NAME MTA 156 CONNECTOR ASSEMBLY, 20 AWG, STANDARD	
TOLERANCES UNLESS OTHERWISE SPECIFIED: 0 PLC ± - 1 PLC ± - 2 PLC ± - 3 PLC ± 0.13 [.005] 4 PLC ± - ANGLES ± -		APVD D. BOSSI 13AUG2003	DRAWING NO C=640432	
MATERIAL		PRODUCT SPEC 108-1051	SIZE A2	RESTRICTED TO
FINISH		APPLICATION SPEC 114-1020	CAGE CODE 00779	SCALE 4:1
		WEIGHT -	DRAWING NO C=640432	SHEET 1 OF 1
		CUSTOMER DRAWING	SCALE 4:1	REV T2