

SPECIFICATIONS

POF Connector

Mechanical

Mating Force: 4.00Kg (8.81Lb) max. (POF)
 4.50Kg (9.91Lb) max. (Mini Din)
Unmating Force: 0.60~4.00Kg (1.32~8.81Lb) (POF)
 0.90~2.70Kg (1.98~5.95Lb) (Mini Din)
Durability: 500 Cycles

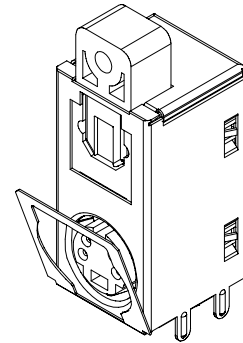
Electrical

Supply Voltage: -0.5~7V (POF)
DC Input Voltage: -0.5V~Vcc+0.5V (POF)
Current Rating: 100V 1A max. (Mini Din)
Contact Resistance: 30mΩ max. (Mini Din)
Dielectric Withstanding Voltage: 750V AC/1min min.

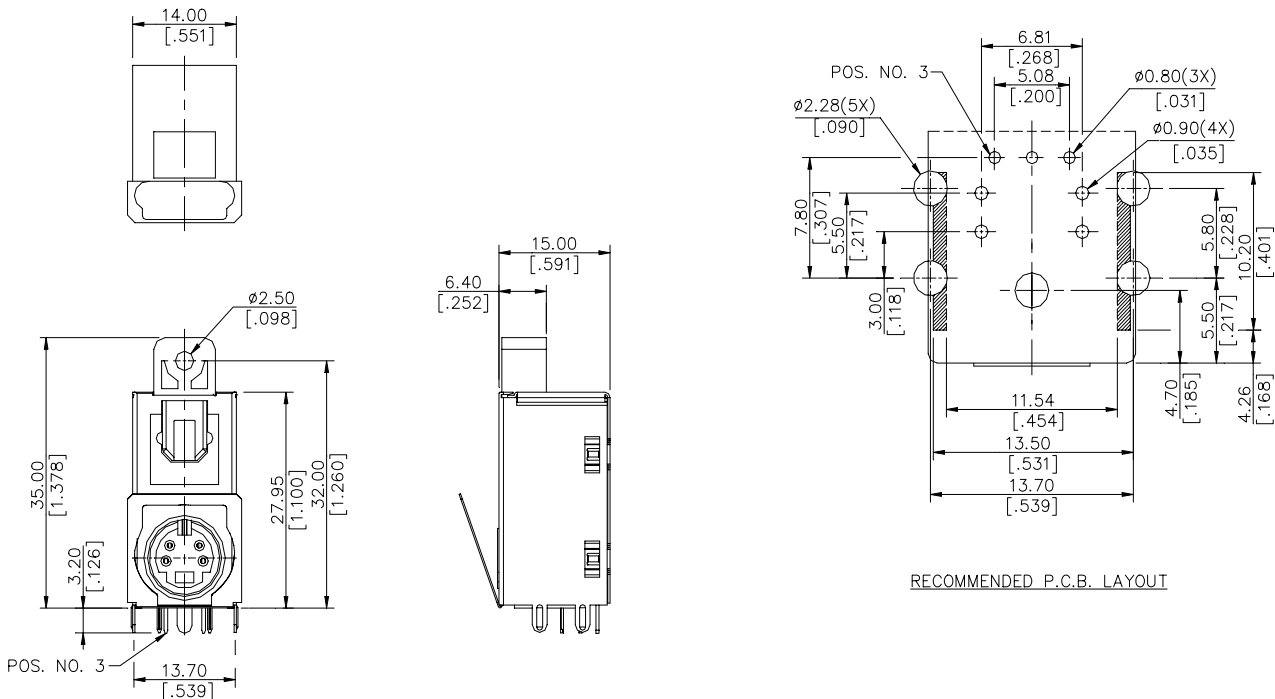
Physical

Housing: Thermoplastic, UL 94V-0 rated
Contact & Shell: Copper alloy
Plating: See "ORDERING INFORMATION"
Operating Temperature: -20°C to +70°C

2F Series
Right Angle, T/H, Type
Over Mini Din
7 Pos.



DRAWING



ORDERING INFORMATION

PRODUCT NO.: 2F 1 2 3 * 1 - T M 1

Plastic Fiber Optical _____
 Termination Type _____
 1=R/A Through Hole
 Body Type _____
 2=Stack
 No. of Pos. _____
 3=3 Pos.
 Transmission Speed _____
 5=6M bps
 8=8M bps
 C=13.2M bps

Modification Code _____
 Mating Type _____
 M=Toslink Door Type
 Driver Type _____
 T=Transmitter
 Contact Area Plating _____
 1=Gold Flash