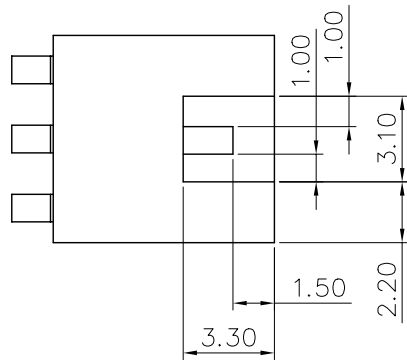
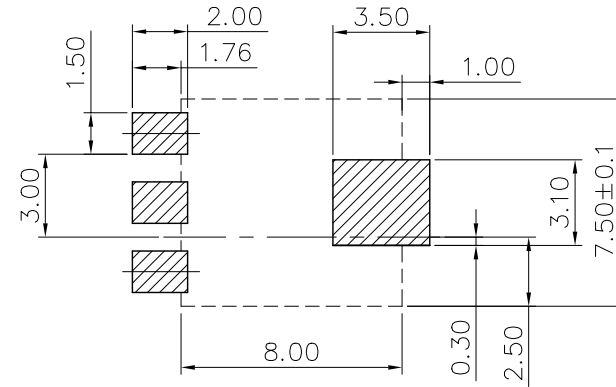


Recommended P.C.B Layout



NOTE:
250101MA□□□□□□00ZU

- 1.No.of pins
- 2.Selective plating
- 'S1,-05u"select.gold in contact/
Min 100u".Tin in solder area.
- 'S2,-Gold flash in contact area/
Min 100u".Tin in solder area.
- 'S3,-10u"select.gold in contact/
Min 100u".Tin in solder area.
- 'S4,-15u"select.gold in contact/
Min 100u".Tin in solder area.
- 'S5,-30u"select.gold in contact/
Min 100u".Tin in solder area.
- 'S6,-50u"select.gold in contact/
Min 100u".Tin in solder area.

| | | | | |
|-----|-------------|-------------|-------|------------------|
| 4 | | | | |
| 3 | Frok | Brass | — | Tin Plated |
| 2 | TERMINAL | PHOS.BRONZE | — | Gold/Tin Plating |
| 1 | PLASTIC | NY-6T | BLACK | UL94V-0 |
| NO. | DESCRIPTION | MATERIAL | COLOR | REMARK |

SUYIN
CONNECTOR

(2/3)

CUSTOMER COPY TITLE: 2.50mm Mobile Phone Battery

| | | | | | | | | | | |
|----------------|-----|----------|--|--------|--------|--|-------|--------|-----|----------|
| | B | | B1: ADD Stroke Dimension; B2: 變更新料號 | | | Angle | ±2° | DRAW | 周孫宇 | 01/12/03 |
| EC1T-020516-03 | A | 02/05/16 | A1: 4.65 ^{+0.00} _{-0.25} -4.50 ^{+0.10} _{-0.20} | 貴能桂 | 李儒平 | 30 ~ | ±0.50 | DESIGN | 周孫宇 | 01/12/03 |
| | O | 01/12/06 | NEW | | | 10 ~ 30 | ±0.30 | CHECK | 宋權哲 | 01/12/03 |
| ECN (DCN) NO. | REV | DATE | DESCRIPTION | CHANGE | APPRO. | ~ 10 | ±0.15 | APPRO. | 宋權哲 | 01/12/03 |
| | | | | | | GENERAL TOLERANCE UNLESS OTHERWISE NOTED | | | | |

| | |
|----------------|-------------------------------|
| PART NO. | 250101MA003SX00ZU |
| PART NO. (OLD) | 2501A-03GXT |
| DRAWING NO. | D ING 250101MA003SX00ZU |
| SCALE | 4:1 |
| UNIT | mm |
| A4 | ☉ |