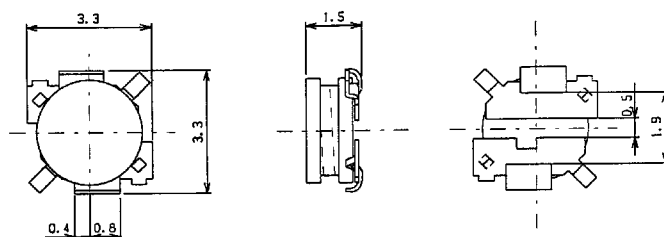


**TYPE D31FU**

**Frequency Range:** 10kHz - 1MHz

**Inductance Range:** 0.1 - 1.2mH

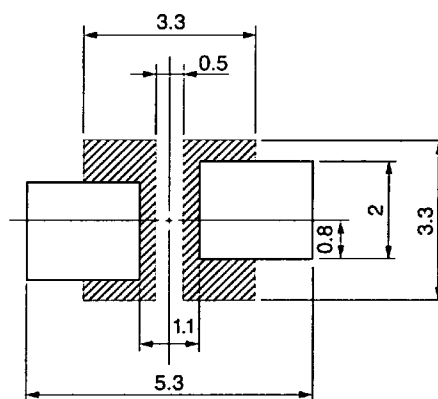


Unit: mm  
Tolerance : ±0.2

**Features**

- Low profile (1.5mm typ. Height) and 3.3mm square
- Ideal for IC inverter EL lamp driver applications
- Available on tape and reel for auto-insertion
- Suitable for reflow soldering

**Recommended patterns:**



Unit: mm

**STANDARD PARTS SELECTION GUIDE**

- (1) Inductance is measured by LCR-meter 4284A (HP) or equivalent.
- (2) DC Resistance is measured by Digital Multimeter TR6871 (Advantest) or equivalent.
- (3) Maximum allowable DC current is that which causes a 10% inductance reduction from the initial value, or coil temperature to rise by 40°C, whichever is smaller. (Reference ambient temperature 20°C).

**TYPE D31FU**

TOKO Part Number	Inductance <sup>(1)</sup> (mH) ±20%	DC <sup>(2)</sup> Resistance (Ω) max.	Inductance Decrease Current (mA) max.	Temperature Rise Current (mA) max.
888FU-101M	0.1	4.8	168	161
888FU-121M	0.12	6.0	152	148
888FU-151M	0.15	7.1	138	137
888FU-181M	0.18	9.0	121	121
888FU-221M	0.22	10	115	107
888FU-271M	0.27	14	100	97
888FU-331M	0.33	16	92	90
888FU-391M	0.39	18	85	86
888FU-471M	0.47	26	78	68
888FU-561M	0.56	30	72	68
888FU-681M	0.68	34	66	62
888FU-821M	0.82	46	58	52
888FU-102M	1.0	53	54	50
888FU-122M	1.2	60	50	47