

Compact Insert Reader with Magnetic and IC Card Interface

- Ideally suited for applications using hybrid magnetic stripe and IC cards
- Landing-style IC contact supports both ISO and CP8 chip contact locations
- Red and green LEDs for operation status indication
- Solenoid-controlled IC card release mechanism
- Configurations available to read on card push or pull
- TTL-compatible interface



Ordering Information

Magnetic Tracks Supported (R, R/W)					IC Contact	Interface	Mag Read Direction	Solenoid	Cover	Cable	Color	Part Number
1	2	3	Center	JIS II								
—	—	—	—	—	ISO 7816	TTL	—	Yes	No	No	Black	3S4YR-SGR0J
R	R	R	—	—	ISO 7816	TTL	Push	Yes	No	No	Black	3S4YR-SGR1J
R	R	R	—	—	ISO 7816, CP8	TTL	Push	Yes	No	No	Black	3S4YR-SGR1X
R	R	R	—	—	—	TTL	Push/pull	No	No	No	Black	3S4YR-SGR1N
—	R	—	—	—	ISO 7816	TTL	Push	Yes	No	No	Black	3S4YR-SGR4J
—	R	—	—	—	—	TTL	Push/pull	No	No	No	Black	3S4YR-SGR4N
R	R	—	—	—	ISO 7816	TTL	Push	Yes	No	No	Black	3S4YR-SGR6J
R	R	—	—	—	—	TTL	Push/pull	No	No	No	Black	3S4YR-SGR6N
—	R	R	—	—	ISO 7816	TTL	Push	Yes	No	No	Black	3S4YR-SGR7J
—	R	R	—	—	—	TTL	Push/pull	No	No	No	Black	3S4YR-SGR7N

Note: Consult the *IC Card Basics* section of this catalog for IC contact descriptions.

■ TYPICAL APPLICATIONS

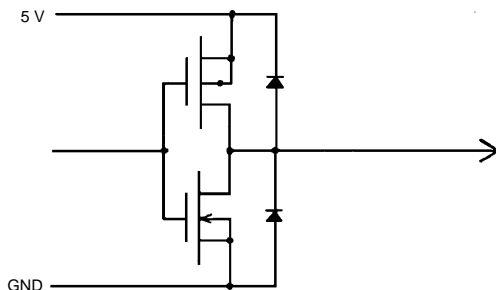
- Remote Terminals for Computers
- Credit Card Readers
- ID Card Checkers
- Electronic Locks
- Automatic Gate Machines
- POS Terminals
- ATMs
- Gas Pump Control
- Vending Machines
- Pre-Paid Systems
- Kiosks

Specifications

Part number		3S4YR-SGR (except 0J)	3S4YR-SGR0J
Recommended card type	Magnetic card	ISO 7810 - 7813	
	IC card	ISO 7816/1-2	
Service life	Mag head	300,000 passes (preliminary)	
	IC contact	500,000 passes (preliminary)	
Operating power supply		5 VDC ± 5%	
Card feed speed		100 to 800 mm/sec.	
Current consumption		2.5 A max. (during solenoid release), 100 mA typ.	
Mounting location		Indoors — away from wind, rain, sunlight, and dust	
Ambient temperature		0° to 45°C (32° to 113°F)	
Ambient humidity	Operation	30% to 85% RH without condensation and frost formation	
Vibration		10-150 Hz, single vibration width of 0.15 mm or on acceleration of 2 G (19.6 m/s ²), whichever is smaller	
Shock		20 G (196 m/s ²) in X, Y, and Z directions, respectively	
Dimensions		126L x 76W x 30H mm (4.96L x 2.99W x 1.18H in)	126L x 76W x 25H mm (4.96L x 2.99W x 0.98H in)
Weight		Approx. 100 g (3.5 oz)	

Engineering Data

■ I/O INFORMATION

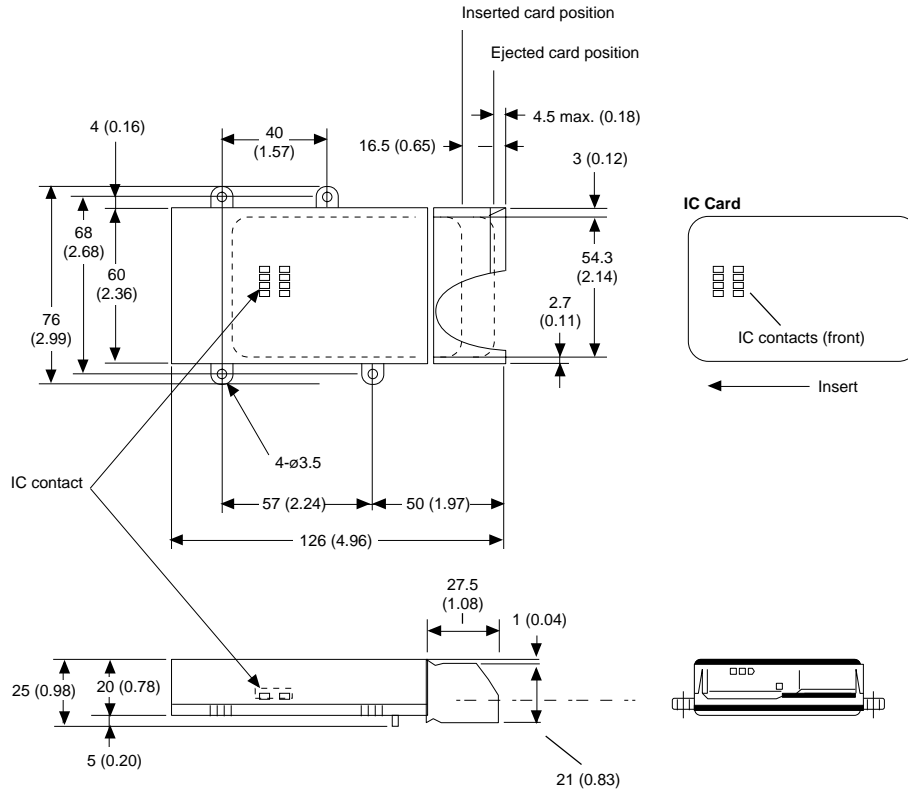


Output signal levels

$V_{OL} = 0.4 \text{ V at } 5 \text{ mA}$

$V_{OH} = 2.8 \text{ at } 0.1 \text{ mA}$

■ 3S4YR-SGR0J



NOTE: DIMENSIONS SHOWN ARE IN MILLIMETERS. To convert millimeters to inches divide by 25.4.

OMRON®

OMRON ELECTRONICS, INC.

One East Commerce Drive
Schaumburg, IL 60173

1-800-55-OMRON

OMRON CANADA, INC.

885 Milner Avenue
Scarborough, Ontario M1B 5V8

416-286-6465