

## AUDIO

- 3 - 9 way available
- Competitively priced
- Industry compatible
- Mates with DBCMD0508, 0508A & 0509 series
- Cable mounted
- Machined Pin

## DIN PLUGS



## SPECIFICATION

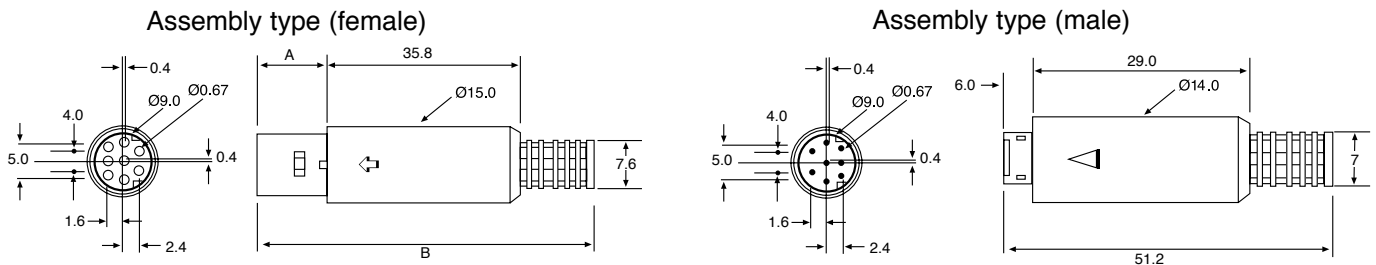
### Material & Finish

<b>Insulator:</b>	PBT Glass filled UL94V-0
<b>Cover:</b>	PVC
<b>Contact:</b>	Copper Alloy
<b>Shell:</b>	Steel
<b>Plating:</b>	Contact <ul style="list-style-type: none"> <li>1. Tin Plated (Complete)</li> <li>2. Gold Flash (Complete)</li> <li>3. Selective Gold over Nickel Plated (Contact Area), tin/lead over Nickel Plated (Tail area)</li> </ul> Shell Nickel Plated

### Electrical Characteristics

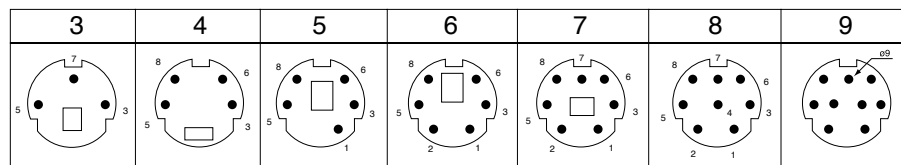
<b>Rating Current:</b>	1 Amp
<b>Contact Resistance:</b>	<15 mΩ
<b>Insulation Resistance:</b>	>1000MΩ at 500v
<b>Dielectric Voltage:</b>	500v at 1 minute
<b>Operating Temperature:</b>	-55°C to +105°C

## OUTLINE DRAWING



Pins	A	B
3	20.50	72.00
4	19.30	71.00
5	12.00	63.50
6	12.50	64.00
7	12.00	63.50
8	15.80	67.50

### Pins



## ORDERING INFORMATION

DBC	MD	11	M	4	T
Dubilier Connectors	Mini Din Connector	Series	Contact Type	No of Ways	Plating Options
			M = Male (plug) F = Female (socket)	3 = 3 Ways 4 = 4 Ways etc...	T = Tin (Std) G = Gold Flash S = Selective