

PLEASE CHECK WWW.MOLEX.COM FOR LATEST PART INFORMATION

Part Number: [0015381024](#)
Status: **Active**
Overview: [cgrid_iii|cgrid_sl_products](#)
Description: 2.54mm (.100") Pitch C-Grid® Shunt Terminal Housings, All Over Tin (Sn), 2 Circuits, with Open End

Documents:

3D Model	Product Specification PS-7859 (PDF)
Packaging Specification (PDF)	RoHS Certificate of Compliance (PDF)
Drawing (PDF)	

Agency Certification

CSA	LR19980
UL	E29179

General

Product Family	Accessories
Series	7859
Component Type	Shunt
MolexKits	Yes
Overview	cgrid_iii cgrid_sl_products
Product Name	C-Grid®, C-Grid III™, SL™

Physical

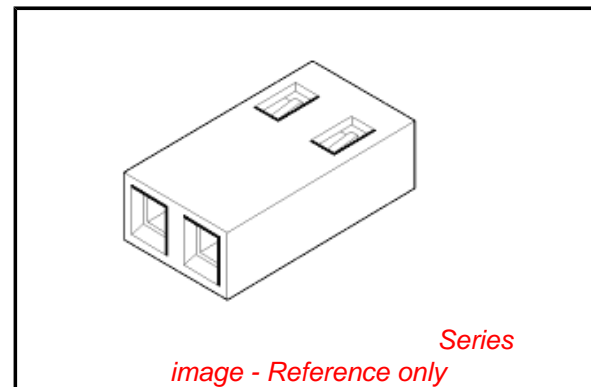
Circuits (Loaded)	2
Color - Resin	Black
Flammability	94V-0
Lock to Mating Part	No
Material - Metal	Phosphor Bronze
Material - Resin	Polyester
Number of Rows	1
Packaging Type	Bag

Material Info

Old Part Number	7859-2164N
-----------------	------------

Reference - Drawing Numbers

Packaging Specification	PK-70873-0815
Product Specification	PS-7859
Sales Drawing	SDA-7859-2***N
Test Summary	TS-7859-0001



EU RoHS

**ELV and RoHS
Compliant**
REACH SVHC
 Not Reviewed
**Halogen-Free
Status**

China RoHS



**Need more information on product
environmental compliance?**

Email productcompliance@molex.com
 For a multiple part number RoHS Certificate of Compliance, [click here](#)

Please visit the [Contact Us](#) section for any non-product compliance questions.

Search Parts in this Series

[7859Series](#)

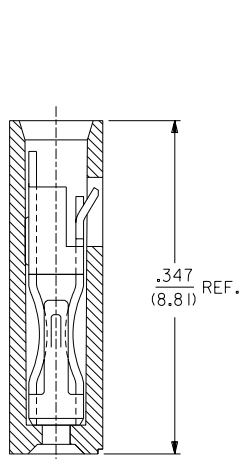
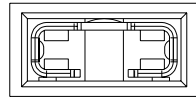
Use With

[70280](#) C-Grid Breakaway Header, [71308](#) C-Grid® Header, [71764](#) C-Grid® Breakaway Header, [42375](#) KK® Breakaway Header, [42377](#) KK® Breakaway Header, [4030](#) KK® Wire-to-Board Header, [42152](#) KK® Wire-to-Board Header

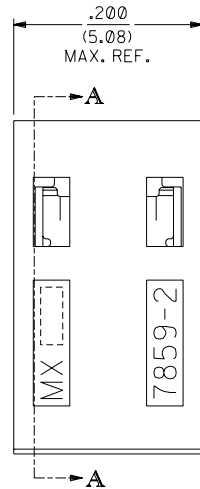
EDP NO.	ENG NO.	FINISH
15-38-1024	A-7859-2164	TIN OVERALL
15-29-1024	A-7859-2554	15 GOLD
15-29-1026	A-7859-2561	30 GOLD

PART IDENTIFICATION:

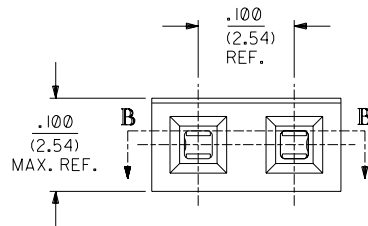
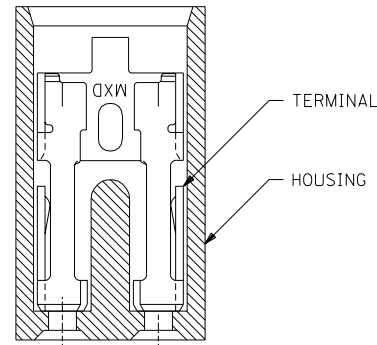
A-7859-2***
 └── PLATING SPECIFICATION



SECTION A-A



SECTION B-B



NOTES:

1. THIS PRODUCT CONFORMS TO MOLEX PRODUCT SPEC. PS-7859.
2. TO BE USED WITH .025/(0.64) SQUARE PINS.
3. MINIMUM MATING PIN LENGTH: .200/(5.08)
4. PRODUCT IS PACKAGED IN BOXES PER PK-70873-0815

FINISH SPECIFICATION

- TIN OVERALL - .000150 MINIMUM TIN PLATE OVER .000050 MINIMUM NICKEL UNDERPLATE.
- 15 GOLD - .000015 MINIMUM GOLD PLATE IN SELECT AREA OVER .000050 MINIMUM NICKEL UNDERPLATE OVERALL.
- 30 GOLD - .000030 MINIMUM GOLD PLATE IN SELECT AREA OVER .000050 MINIMUM NICKEL UNDERPLATE OVERALL.

MATERIAL:

HOUSING: GLASS FILLED POLYESTER; 94V-0; COLOR: BLACK.
 TERMINAL: PHOSPHOR BRONZE ALLOY

NOTE FOR LEAD FREE CONVERSION:

THE PRIMARY SHIPPING CARTON WILL BE LABELED "COMPLIANT TO ROHS DIRECTIVE 2002/95/EC AND ELV ANNEX II OF DIRECTIVE 2000/53/EC". CARTONS WITHOUT THIS LABEL MAY CONTAIN PRODUCT WITH LEAD.

7859

D	LEAD FREE CONV ECN UCP2004-2133 RKADAMS 04/04/27
C1	ADDED PKG. SPEC. PER ECN U10786 WHETSTON 97/2/7
C	CHANGED MATERIAL PER ECR # U51214 95/06/02 CAC
B	REVISED ENG. NOS. PER ECR # U31581 10/26/93 REED
A	RELEASED PER ECR # U30372 03/11/93 REED
3	REVISE GOLD PLTG. PER ECR # U12055 10/18/91 AAB
2	REVISE TERM. PLTG. PER ECR # U11096 06/18/91 AAB
1	*X* RELEASE PER ECR # U10445 02/07/91 AAB

DIMENSIONS SHOWN (METRIC) INCH		UNLESS OTHERWISE SPECIFIED TOLERANCES: ANGULAR ± 1/2°		REVISIONS	
INCH	METRIC	FILE NAME	SHEET NO.	DATE	
3 PLACE ± .005	---	7859X1	1 OF 1	02/07/91	
2 PLACE ± .01	± 0.13	MOLEX INCORPORATED U.S.A. 60532			
1 PLACE ---	± 0.25	SALES ASSY - SHUNT 2-CIRCUIT TERMINAL W/OPEN END			
DRAFT WHERE APPLICABLE MUST REMAIN WITHIN DIMENSIONS		SEE CHART		SDA-7859-2***N	
DRWG. BY: AAB	CHK'D. BY:	MFG, SH, REV, LTR.		REVISE ONLY ON CAD SYSTEM	
APP'D. BY: MJM	SCALE: 10: 1	THIS DRAWING CONTAINS INFORMATION THAT IS PROPRIETARY TO MOLEX INC. AND SHOULD NOT BE USED WITHOUT WRITTEN PERMISSION.			