

PLEASE CHECK WWW.MOLEX.COM FOR LATEST PART INFORMATION

Part Number: [0850017005](#)
Status: **Active**
Overview: [din_41612](#)
Description: 2.54mm (.100") Pitch DIN 41612 B Style Male Header, High Temperature Housing, Right Angle, Through Hole, 0.60µm (24µ") Selective Gold (Au) Plating, 64 Circuits, with Mounting Clips, No Flux Proof, Lead free

Documents:

[Drawing \(PDF\)](#) [RoHS Certificate of Compliance \(PDF\)](#)
[Product Specification PS-85003-0001 \(PDF\)](#)

General

| | |
|----------------|------------------------------------|
| Product Family | Backplane Connectors |
| Series | 85001 |
| Application | Backplane |
| Comments | With Mounting Clips. No Flux Proof |
| Component Type | PCB Header |
| Overview | din_41612 |
| Product Name | IEC 603-2/DIN 41612 |
| Style | B |

Physical

| | |
|--------------------------------|---|
| Circuits (Loaded) | 64 |
| Circuits (maximum) | 64 |
| Circuits Detail | Standard Contacts at A:a1-a32; B:b1-b32 |
| Color - Resin | Natural |
| Durability (mating cycles max) | 400 |
| First Mate / Last Break | No |
| Guide to Mating Part | No |
| Keying to Mating Part | Yes |
| Material - Metal | Brass |
| Material - Plating Mating | Gold |
| Material - Plating Termination | Tin |
| Material - Resin | High Temperature Thermoplastic |
| Number of Columns | 16 |
| Number of Pairs | Open Pin Field |
| Number of Rows | 2 |
| Orientation | Right Angle |
| PC Tail Length (in) | 0.154 In |
| PC Tail Length (mm) | 3.90 mm |
| PCB Locator | No |
| PCB Retention | Yes |
| Packaging Type | Carton |
| Pitch - Mating Interface (in) | 0.100 In |
| Pitch - Mating Interface (mm) | 2.54 mm |
| Pitch - Term. Interface (in) | 0.100 In |
| Pitch - Term. Interface (mm) | 2.54 mm |
| Plating min: Mating (µin) | 24 |
| Plating min: Mating (µm) | 0.60 |
| Plating min: Termination (µin) | 98 |
| Plating min: Termination (µm) | 2.5 |
| Polarized to PCB | Yes |
| Stackable | No |
| Surface Mount Compatible (SMC) | Yes |
| Temperature Range - Operating | -55°C to +125°C |
| Termination Interface: Style | Through Hole |

EU RoHS

**ELV and RoHS
Compliant**
REACH SVHC
 Not Reviewed
**Halogen-Free
Status**

China RoHS



Not Reviewed

Need more information on product environmental compliance?

Email productcompliance@molex.com
 For a multiple part number RoHS Certificate of Compliance, [click here](#)

Please visit the [Contact Us](#) section for any non-product compliance questions.

Search Parts in this Series

[85001Series](#)

Electrical

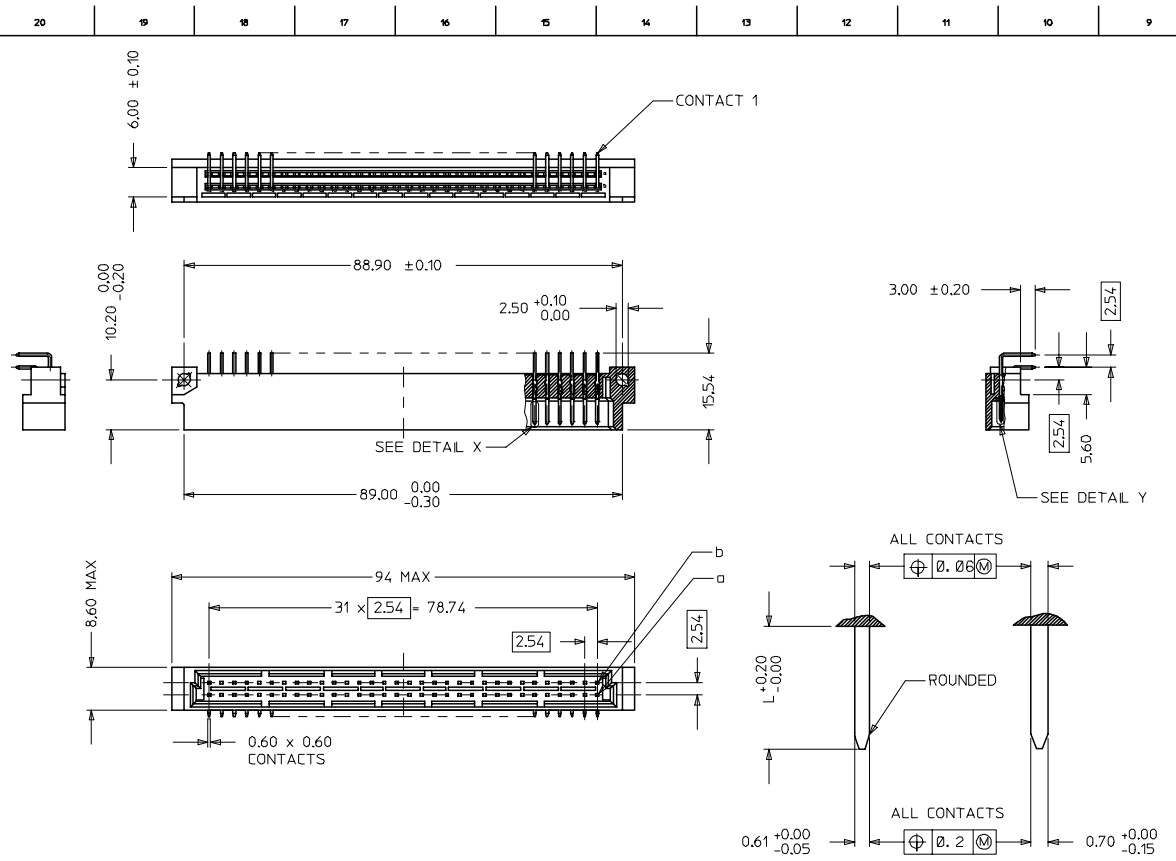
| | |
|-------------------------------|---------------|
| Current - Maximum per Contact | 1A |
| Data Rate | 622.0 Mbps |
| Voltage - Maximum | 250V AC (RMS) |

Material Info**Reference - Drawing Numbers**

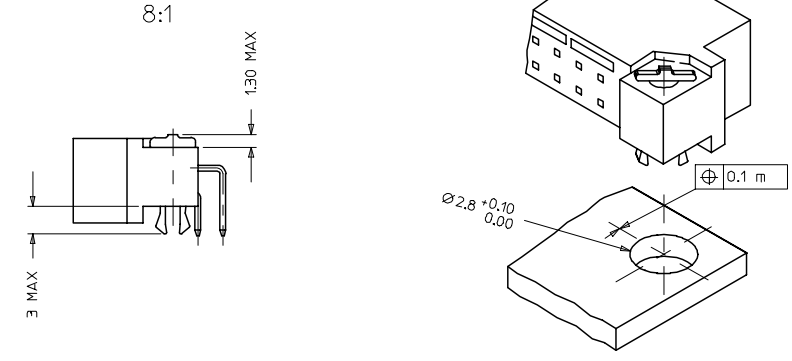
| | |
|-------------------------|---|
| Packaging Specification | PK-36507-001 |
| Product Specification | PS-85003-0001 |
| Sales Drawing | SD-85001-0001, SDA-85001-0001, SDA-85001-7005 |

This document was generated on 05/17/2010

PLEASE CHECK WWW.MOLEX.COM FOR LATEST PART INFORMATION

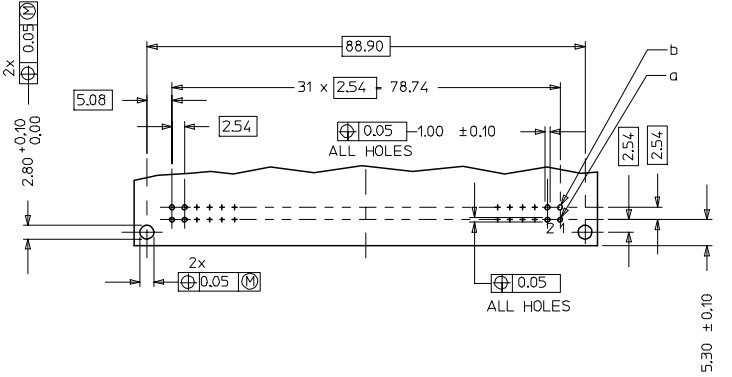


WITH MOUNTING CLIPS



- NOTES:
- MATERIALS: THERMX (PCT), GLASS FILLED, UL94V-0.COLOUR: NATURAL
TERMINAL - BRASS
MOUNTING CLIP: STEEL
 - FINISH: TERMINAL-
CONTACT AREA
1. PERFORMANCE LEVEL 1: SELECTIVE GOLD (Au), THICKNESS = 1.1 MICROMETER
OVER NICKEL, THICKNESS = 1.25 MICROMETER
2. PERFORMANCE LEVEL 2: SELECTIVE GOLD (Au), THICKNESS = 0.6 MICROMETER
OVER NICKEL, THICKNESS = 1.25 MICROMETER
3. PERFORMANCE LEVEL 3: SELECTIVE GOLD (Au), THICKNESS = 0.3 MICROMETER
OVER NICKEL, THICKNESS = 1.25 MICROMETER
TERMINATION AREA:
SELECTIVE TIN, THICKNESS = 2.5 MICROMETER
OVER NICKEL, THICKNESS = 1.25 MICROMETER OVERALL
 - MOUNTING CLIP:-
TIN (Sn), THICKNESS = 5-10 MICROMETER,
OVER NICKEL (Ni), THICKNESS = 2.5 MICROMETER
 - FOR NON MOUNTING CLIP OPTION, CONNECTOR TO BE SECURED WITH
RIVETS: 2 TUBULAR RIVETS 2.5 x 0.3 - DIN 7340
SCREWS: 2 CHEESEHEAD SCREWS M2.5 x ... DIN 84 AND 2 HEXAGONAL NUTS M2.5 DIN 934
 - MATERIAL NUMBER, BATCH CODE, UL AND CSA MARKING
TO BE PRINTED ON THE CONNECTOR
 - CUT FACE OF TIP WITHOUT PLATING PERMITTED
 - PRODUCT SPECIFICATION PS : 85003-0001

RECOMMENDED PCB LAYOUT COMPONENT SIDE



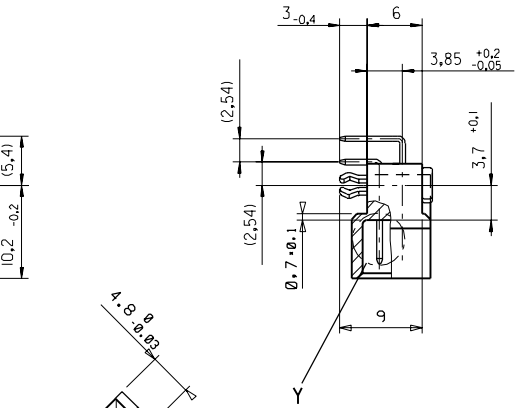
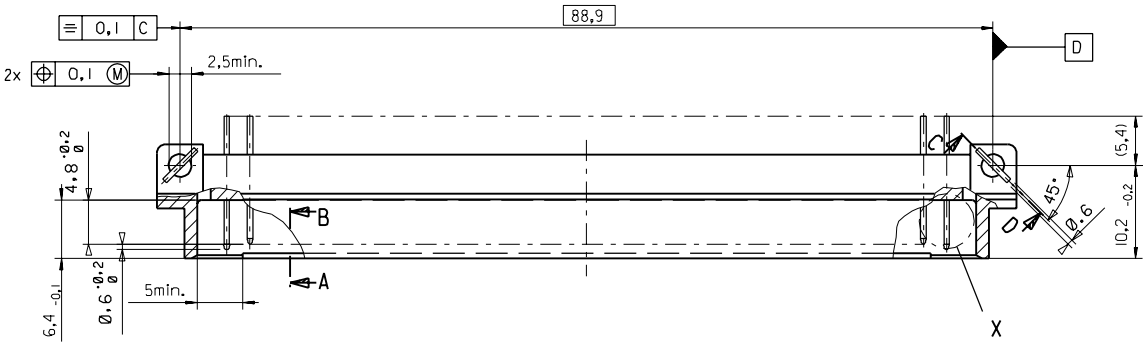
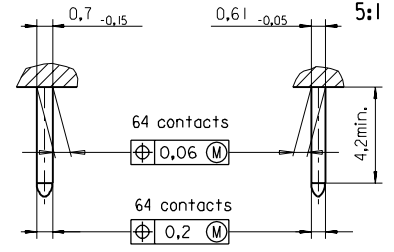
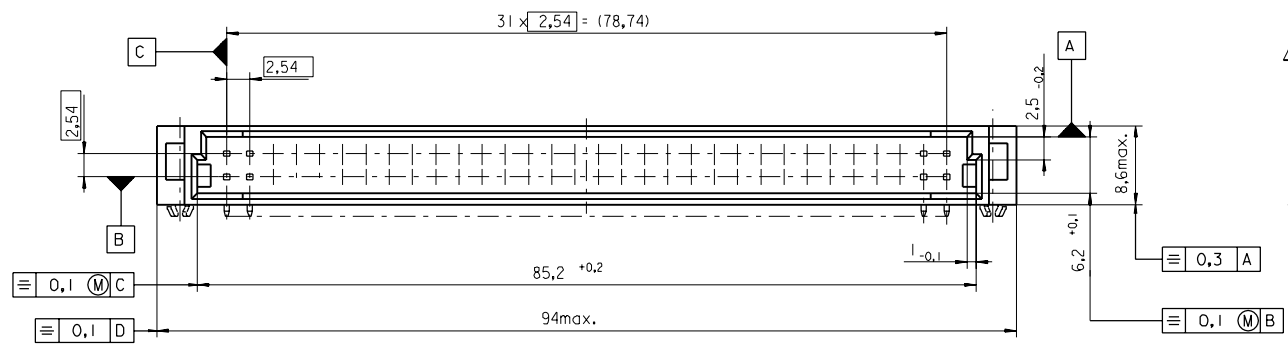
| | |
|---------------------|-----|
| PRE MATING CONTACTS | 5.4 |
| NORMAL CONTACTS | 4.8 |
| | L |

RoHS COMPLIANT

| | | | | | | | | |
|---|--------------------------------------|---|---------------------------------|---|--------------------|-------------------------------------|------------------------|--|
| ENTER DESCRIPTION ELC.NCL.12007-0193 DRAWING NO. 2007/01/08 CHKD.SSUDHAR 2007/01/08 APPR.PRASAD 2007/01/09 | QUALITY SYMBOLS ▽=0 ▽=0 | GENERAL TOLERANCES (UNLESS SPECIFIED) | | DIMENSION STYLE MM ONLY | | SCALE 2:1 | DESIGN UNITS METRIC | THIRD ANGLE PROJECTION |
| | | 4 PLACES ± --- ± --- 3 PLACES ± 0.05 ± --- 2 PLACES ± 0.1 ± --- 1 PLACE ± 0.15 ± --- | INCH ± --- ± --- ± --- | DRAWN BY SS | DATE 2004/04/06 | CHECKED BY G.J.LOWE | DATE 2004/04/06 | ASSEMBLY, DIN 41612, B MALE, 64 POS. HIGH TEMPERATURE CONNECTOR |
| DRAFT WHERE APPLICABLE MUST REMAIN WITHIN DIMENSIONS | | SEE CHART | | MATERIAL NO. | | DOCUMENT NO. | | SHEET NO. |
| | | SIZE A1 | | THIS DRAWING CONTAINS INFORMATION THAT IS PROPRIETARY TO MOLEX INCORPORATED AND SHOULD NOT BE USED WITHOUT WRITTEN PERMISSION | | MOLEX INCORPORATED SD-85001-0001 | | 4 OF 4 |

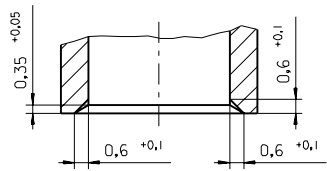
PART NO.
DWG. NO.

View X 5:1 View Y 5:1



Section C - D

Section A - B
5:1



| | | | | | |
|--|---|---|-----------------------|--|------|
| FIRST ANGLE PROJECTION | | REVISE ONLY ON CAD SYSTEM | | SH. | REV. |
| first release see ECN No. 1887 | REVISIONS FOR PREVIOUS REVISIONS SEE MRI LIST | UNLESS OTHERWISE SPECIFIED TOLERANCES: ANGULAR ±2° | DRWG BY Ca | CAD/CAM PROJECT NAME 85001000 811 | |
| | | INCH METRIC | CHK'D BY KN | THIS DRAWING CONTAINS INFORMATION THAT IS PROPRIETARY TO MOLEX INC. & SHOULD NOT BE USED WITHOUT WRITTEN PERMISSION | |
| | | 3 PLACE ± . ± | APP'D BY | TITLE 64 pos. Male connector acc. DIN 41612 style B Dimensions | |
| | | 2 PLACE ± . ± | SCALE 2:1 | SHEET NO. DATE 1 OF 95/06/06 | |
| 1 PLACE ± . ± | DESIGN DIMENSION <input checked="" type="checkbox"/> MM | MOLEX MOLEX EUROPE | | SHEET NO. DATE | |
| DRAFT WHERE APPLICABLE MUST REMAIN WITHIN DIMENSIONS | EQUIVALENT DIMENSION <input type="checkbox"/> MM | PART NO. | | DWG NO. | |
| IF TWO DIMENSIONS ARE SHOWN THE UPPER IS THE DESIGN DIMENSION, LOWER IS SECONDARY | | SDA-85001-0001 | | SIZE B | |

