

PLEASE CHECK WWW.MOLEX.COM FOR LATEST PART INFORMATION

Part Number: [0395011007](#)
Status: **Active**
Description: 3.50mm (.138") Pitch Eurostyle™ Vertical PCB Header, 7 Circuits

Documents:

[3D Model](#) [Product Specification PS-39500-001 \(PDF\)](#)
[Drawing \(PDF\)](#) [RoHS Certificate of Compliance \(PDF\)](#)

General

| | |
|-----------------------------|---------------------------|
| Product Family | Terminal Blocks |
| Series | 39501 |
| Application | Wire-to-Board |
| Component Type | PCB Header |
| Product Literature Order No | USA-355 |
| Product Name | ESE, Eurostyle™ Pluggable |
| Type | Euro Block |

Physical

| | |
|--------------------------------|-----------------|
| Circuits (Loaded) | 7 |
| Entry Angle | N/A |
| Lock to Mating Part | None |
| Number of Rows | 1 |
| Orientation | Vertical |
| PC Tail Length (in) | 0.138 In |
| PC Tail Length (mm) | 3.50 mm |
| PCB Thickness Recommended (in) | 0.098 In |
| PCB Thickness Recommended (mm) | 2.50 mm |
| Panel Mount | No |
| Pitch - Mating Interface (in) | 0.138 In |
| Pitch - Mating Interface (mm) | 3.50 mm |
| Polarized to Mating Part | Yes |
| Shrouded | Fully |
| Stackable | No |
| Temperature Range - Operating | -40°C to +105°C |
| Wire Size AWG | N/A |

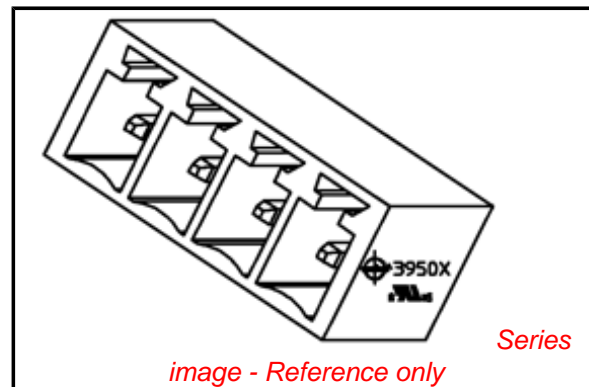
Electrical

| | |
|-------------------------------|------|
| Current - Maximum per Contact | 8A |
| Voltage - Maximum | 300V |

Material Info

Reference - Drawing Numbers

| | |
|-----------------------|----------------------------|
| Product Specification | PS-39500-001 |
| Sales Drawing | SD-39501-001, SD-39501-002 |



EU RoHS

**ELV and RoHS
Compliant**
REACH SVHC
 Not Reviewed
**Halogen-Free
Status**
 Not Reviewed

China RoHS



**Need more information on product
environmental compliance?**

Email productcompliance@molex.com
 For a multiple part number RoHS Certificate of
 Compliance, [click here](#)

Please visit the [Contact Us](#) section for any
 non-product compliance questions.

Search Parts in this Series

[39501Series](#)

Mates With

Most 3.50mm (.138") Pitch Industry
 Standard Plugs, [39500](#) Horizontal Plug,
[39503](#) Vertical Plug

10 9 8 7 6 5 4 3 2 1

F

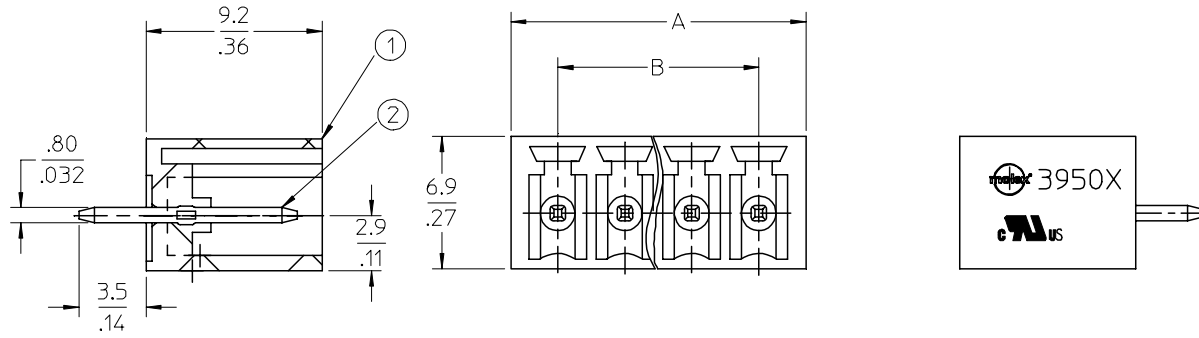
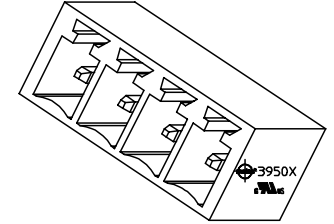
E

D

C

B

A



SPECIFICATIONS:

- 1. Material:
 - (1). Body: PA66
 - (2). Terminal: Brass
- 2. Wire range: N/A
- 3. Electrical rating: 300V, 8A.
- 4. Max Torque: N/A.
- 5. Wire strip length: N/A.
- 6. Operating temperature: -40C to +105C.
- 7. A = (N x P) + 1.4MM
- 8. B = (N - 1) x P
- 9. P (PITCH) = 3.5MM (.138").
- 10. N = Number of positions available 2 through 20.

| | | | | | | | | | |
|---|-------------------------------|--|--|---------------------------|--|---|----------------------|---|--|
| ENTER DESCRIPTION EC NO: NEO2006-0310 DRWNL: LROTHAUS 2006/01/09 CHKD: CYORK 2006/01/09 APPR: JPAMLICK 2006/01/10 | QUALITY SYMBOLS = 0 = 0 | GENERAL TOLERANCES (UNLESS SPECIFIED) | | DIMENSION STYLE MM/IN | | SCALE 4:1 | DESIGN UNITS INCH | THIRD ANGLE PROJECTION | |
| | | | | DRAWN BY LROTHAUS | | DATE 12/06/05 | | TITLE 3.5MM, EURO HEADER VERTICAL, CLOSED END | |
| | | | | CHECKED BY C. YORK | | DATE 01/06/06 | | | |
| | | | | APPROVED BY | | DATE | | MOLEX INCORPORATED | |
| | | ANGULAR ± 2 ° | | MATERIAL NO. SEE CHART | | DOCUMENT NO. SD-39501-001 | | SHEET NO. 1 OF 1 | |
| | | DRAFT WHERE APPLICABLE MUST REMAIN WITHIN DIMENSIONS | | SIZE B | | THIS DRAWING CONTAINS INFORMATION THAT IS PROPRIETARY TO MOLEX INCORPORATED AND SHOULD NOT BE USED WITHOUT WRITTEN PERMISSION | | | |

9 8 7 6 5 4 3 2 1

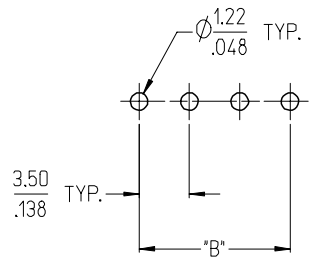
10 9 8 7 6 5 4 3 2 1

| Description | Circuit size | Material Numbers | | | | | | | | | | | Dimensional Information | | | | |
|------------------------------|--------------|------------------|-----------|-----------|------------------|-----------|-----------|------------------|-----------|-----------|------------------|-----------|-------------------------|-------|-------|-------|-------|
| | | Black | | | | | | Green | | | | | Dim. A | | Dim B | | |
| | | 100% Tin | | | 30 u" Gold | | | 100% Tin | | | 30 u" Gold | | | | | | |
| | | Printing Options | | | Printing Options | | | Printing Options | | | Printing Options | | | | | | |
| None | 10AV | 11AV | None | 10AV | 11AV | None | 10AV | 11AV | None | 10AV | 11AV | mm | inch | mm | inch | | |
| 3.5mm, Euro Header, Vertical | 2 | 395011002 | 395011302 | 395011402 | 395011502 | 395011802 | 395011902 | 395016002 | 395016302 | 395016402 | 395016502 | 395016802 | 395016902 | 8.40 | 0.331 | 3.50 | 0.138 |
| 3.5mm, Euro Header, Vertical | 3 | 395011003 | 395011303 | 395011403 | 395011503 | 395011803 | 395011903 | 395016003 | 395016303 | 395016403 | 395016503 | 395016803 | 395016903 | 11.90 | 0.469 | 7.00 | 0.276 |
| 3.5mm, Euro Header, Vertical | 4 | 395011004 | 395011304 | 395011404 | 395011504 | 395011804 | 395011904 | 395016004 | 395016304 | 395016404 | 395016504 | 395016804 | 395016904 | 15.40 | 0.606 | 10.50 | 0.413 |
| 3.5mm, Euro Header, Vertical | 5 | 395011005 | 395011305 | 395011405 | 395011505 | 395011805 | 395011905 | 395016005 | 395016305 | 395016405 | 395016505 | 395016805 | 395016905 | 18.90 | 0.744 | 14.00 | 0.551 |
| 3.5mm, Euro Header, Vertical | 6 | 395011006 | 395011306 | 395011406 | 395011506 | 395011806 | 395011906 | 395016006 | 395016306 | 395016406 | 395016506 | 395016806 | 395016906 | 22.40 | 0.882 | 17.50 | 0.689 |
| 3.5mm, Euro Header, Vertical | 7 | 395011007 | 395011307 | 395011407 | 395011507 | 395011807 | 395011907 | 395016007 | 395016307 | 395016407 | 395016507 | 395016807 | 395016907 | 25.90 | 1.020 | 21.00 | 0.827 |
| 3.5mm, Euro Header, Vertical | 8 | 395011008 | 395011308 | 395011408 | 395011508 | 395011808 | 395011908 | 395016008 | 395016308 | 395016408 | 395016508 | 395016808 | 395016908 | 29.40 | 1.157 | 24.50 | 0.965 |
| 3.5mm, Euro Header, Vertical | 9 | 395011009 | 395011309 | 395011409 | 395011509 | 395011809 | 395011909 | 395016009 | 395016309 | 395016409 | 395016509 | 395016809 | 395016909 | 32.90 | 1.295 | 28.00 | 1.102 |
| 3.5mm, Euro Header, Vertical | 10 | 395011010 | 395011310 | 395011410 | 395011510 | 395011810 | 395011910 | 395016010 | 395016310 | 395016410 | 395016510 | 395016810 | 395016910 | 36.40 | 1.433 | 31.50 | 1.240 |
| 3.5mm, Euro Header, Vertical | 11 | 395011011 | 395011311 | 395011411 | 395011511 | 395011811 | 395011911 | 395016011 | 395016311 | 395016411 | 395016511 | 395016811 | 395016911 | 39.90 | 1.571 | 35.00 | 1.378 |
| 3.5mm, Euro Header, Vertical | 12 | 395011012 | 395011312 | 395011412 | 395011512 | 395011812 | 395011912 | 395016012 | 395016312 | 395016412 | 395016512 | 395016812 | 395016912 | 43.40 | 1.709 | 38.50 | 1.516 |
| 3.5mm, Euro Header, Vertical | 13 | 395011013 | 395011313 | 395011413 | 395011513 | 395011813 | 395011913 | 395016013 | 395016313 | 395016413 | 395016513 | 395016813 | 395016913 | 46.90 | 1.846 | 42.00 | 1.654 |
| 3.5mm, Euro Header, Vertical | 14 | 395011014 | 395011314 | 395011414 | 395011514 | 395011814 | 395011914 | 395016014 | 395016314 | 395016414 | 395016514 | 395016814 | 395016914 | 50.40 | 1.984 | 45.50 | 1.791 |
| 3.5mm, Euro Header, Vertical | 15 | 395011015 | 395011315 | 395011415 | 395011515 | 395011815 | 395011915 | 395016015 | 395016315 | 395016415 | 395016515 | 395016815 | 395016915 | 53.90 | 2.122 | 49.00 | 1.929 |
| 3.5mm, Euro Header, Vertical | 16 | 395011016 | 395011316 | 395011416 | 395011516 | 395011816 | 395011916 | 395016016 | 395016316 | 395016416 | 395016516 | 395016816 | 395016916 | 57.40 | 2.260 | 52.50 | 2.067 |
| 3.5mm, Euro Header, Vertical | 17 | 395011017 | 395011317 | 395011417 | 395011517 | 395011817 | 395011917 | 395016017 | 395016317 | 395016417 | 395016517 | 395016817 | 395016917 | 60.90 | 2.398 | 56.00 | 2.205 |
| 3.5mm, Euro Header, Vertical | 18 | 395011018 | 395011318 | 395011418 | 395011518 | 395011818 | 395011918 | 395016018 | 395016318 | 395016418 | 395016518 | 395016818 | 395016918 | 64.40 | 2.535 | 59.50 | 2.343 |
| 3.5mm, Euro Header, Vertical | 19 | 395011019 | 395011319 | 395011419 | 395011519 | 395011819 | 395011919 | 395016019 | 395016319 | 395016419 | 395016519 | 395016819 | 395016919 | 67.90 | 2.673 | 63.00 | 2.480 |
| 3.5mm, Euro Header, Vertical | 20 | 395011020 | 395011320 | 395011420 | 395011520 | 395011820 | 395011920 | 395016020 | 395016320 | 395016420 | 395016520 | 395016820 | 395016920 | 71.40 | 2.811 | 66.50 | 2.618 |

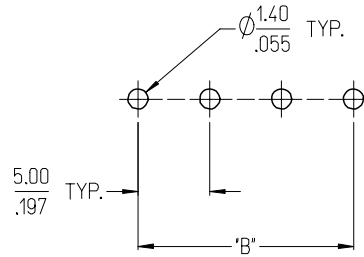
| | | | | | | | | |
|---|-------------------------------|---|--------|---|----------------------|---------------------|--|------------------------|
| SEE SHEET 1 EC NO: NEC2006-0310 (DRW):LROTHAUS 2006/01/09 (CHKD):CYORK 2006/01/09 (APPR):JPAWLIK 2006/01/10 | QUALITY SYMBOLS ▽=0 ▽=0 | GENERAL TOLERANCES (UNLESS SPECIFIED) | | DIMENSION STYLE MM/IN | | SCALE 4:1 | DESIGN UNITS INCH | THIRD ANGLE PROJECTION |
| | | | mm | INCH | DRAWN BY LROTHAUS | DATE 12/6/05 | TITLE 3.5MM, EURO HEADER VERTICAL, CLOSED END | |
| | | 4 PLACES ± --- | ±.0015 | CHECKED BY C. YORK | DATE 01/06/06 | | | |
| | | 3 PLACES ±0.038 | ±.005 | APPROVED BY | DATE | | | |
| 2 PLACES ±0.13 | ±.01 | MATERIAL NO. SEE CHART | | DOCUMENT NO. SD-39501-001 | | SHEET NO. 2 OF 2 | | |
| 1 PLACE ±0.3 | ± --- | DRAFT WHERE APPLICABLE MUST REMAIN WITHIN DIMENSIONS | | THIS DRAWING CONTAINS INFORMATION THAT IS PROPRIETARY TO MOLEX INCORPORATED AND SHOULD NOT BE USED WITHOUT WRITTEN PERMISSION | | | | |
| ANGULAR ± 2 ° | | | | | | | | |

9 8 7 6 5 4 3 2 1

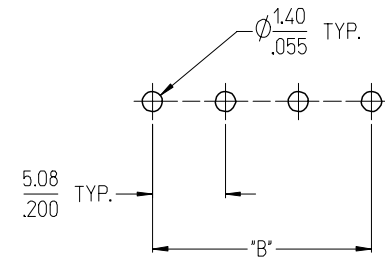
3950X SERIES
3.50mm HEADERS



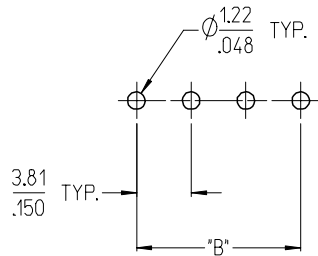
3952X & 3954X SERIES
5.00mm HEADERS
5.00mm 10 AMP FIXED



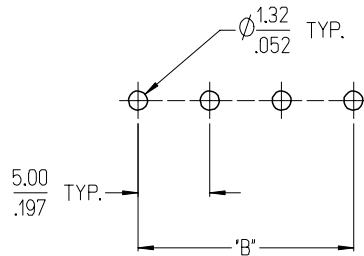
3953X SERIES
5.08mm HEADERS



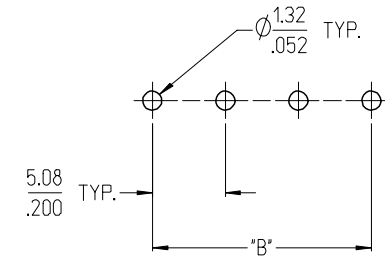
3951X SERIES
3.81mm HEADERS



3954X SERIES
5.00mm 15 AMP FIXED



3954X SERIES
5.08mm 15 AMP FIXED



NOTES:

- REFER TO INDIVIDUAL PRODUCT SALES DRAWINGS FOR "B" DIMENSION.
- DOES NOT APPLY TO DUAL LEVEL HEADERS, SERIES 39528 AND 39538.
- TYP. = TYPICAL.

| | |
|-----------------|---------------------|
| INITIAL RELEASE | EC NO: ETC2007-0096 |
| DRWN: CLYORK | 2006/10/02 |
| CHKD: JMACNEIL | 2006/10/04 |
| APPR: JMACNEIL | 2006/10/04 |
| REV | DESCRIPTION |
| A | |

| |
|-----------------|
| QUALITY SYMBOLS |
| ▽=0 |
| ▽=0 |

| GENERAL TOLERANCES (UNLESS SPECIFIED) | |
|--|---------------|
| | mm INCH |
| 4 PLACES | ± .005 ± .002 |
| 3 PLACES | ± .005 ± .002 |
| 2 PLACES | ± 0.13 ± .01 |
| 1 PLACE | ± 0.3 ± .01 |
| ANGULAR ± 2 ° | |
| DRAFT WHERE APPLICABLE MUST REMAIN WITHIN DIMENSIONS | |

| DIMENSION STYLE | |
|-----------------|------------|
| MM/IN | |
| DRAWN BY | DATE |
| C. YORK | 2006/08/25 |
| CHECKED BY | DATE |
| J. MACNEIL | 2006/08/25 |
| APPROVED BY | DATE |
| J. MACNEIL | 2006/08/25 |
| MATERIAL NO. | |
| -- | |

| | | |
|---|--------------|------------------------|
| SCALE | DESIGN UNITS | THIRD ANGLE PROJECTION |
| 3:1 | INCH | |
| TITLE | | |
| RECOMMENDED PCB LAYOUT FOR ESE TERMINAL BLOCKS | | |
| MOLEX INCORPORATED | | |
| DOCUMENT NO. | SHEET NO. | |
| SD-39501-002 | 1 OF 1 | |
| THIS DRAWING CONTAINS INFORMATION THAT IS PROPRIETARY TO MOLEX INCORPORATED AND SHOULD NOT BE USED WITHOUT WRITTEN PERMISSION | | |