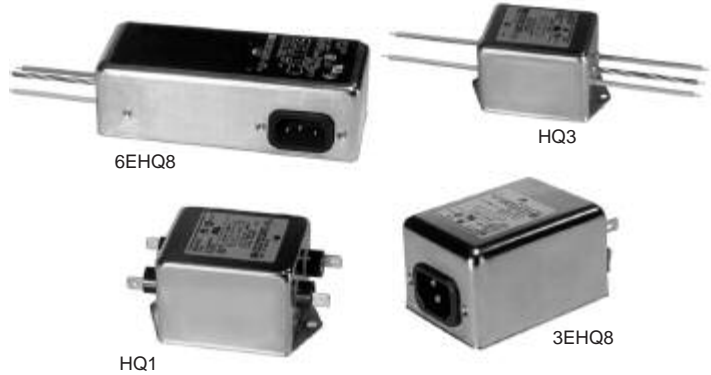


Highest Performance RFI Filters for Medical Equipment

HQ Series



**UL Recognized
CSA Certified
VDE Approved**



HQ Series

The HQ series power line filters provide the highest available common-mode and differential-mode attenuation to RFI noise in the frequency range from 10kHz to 30MHz, for IEC 60601 and UL2601 patient-connected equipment, as well as all other electronic equipment that cannot tolerate any leakage current.

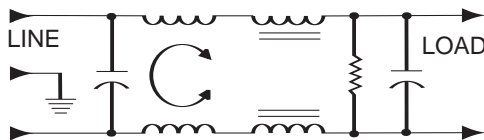
They are a size- and more cost-effective solution to the problem of meeting both medical leakage current limits and conducted emissions limits in equipment with high noise sources (such as switching power supplies). HQ series filters can help meet the following Conducted Emissions standards:

- European Normalized Standards based on EN55022, Level B
- FCC Part 15, Computing Devices, Class B.
- FCC Part 18, ISM Equipment, Industrial and Consumer.

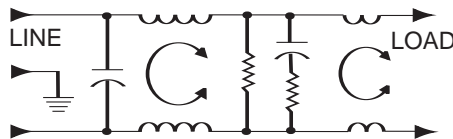
For more information on UL2601, see Appendix C.

Electrical Schematics

3 Amp Models



6 Amp Models



Resistor location for reference only.

Specifications

Maximum leakage current, each line-to-ground	
@ 120 VAC 60 Hz:	2µA
@ 250 VAC 50 Hz:	5µA
Hipot rating (one minute):	
line-to-ground	2250 VDC
line-to-line	1450 VDC
Operating frequency:	50/60 Hz
Rated voltage (max.):	250 VAC
Rated current:	
3EHQ	3A
6EHQ	6A
Maximum rated current peaks:	
3EHQ	10A
6EHQ	18A
Minimum insertion loss in dB:	
Line-to-ground in 50 ohm circuit	

Current Rating	Frequency—MHz											
	.01	.02	.05	.15	.5	1	2	5	7	10	20	30
3A	19	24	32	44	44	40	38	28	25	22	13	10
6A	24	29	39	42	28	35	36	30	30	24	16	15

Line-to-line in 50 ohm circuit

Current Rating	Frequency—MHz											
	.01	.02	.05	.15	.5	1	2	5	7	10	20	30
3A	1	18	43	68	75	75	72	70	66	65	60	60
6A	6	10	43	70	75	75	75	65	50	55	50	40

Line Cord

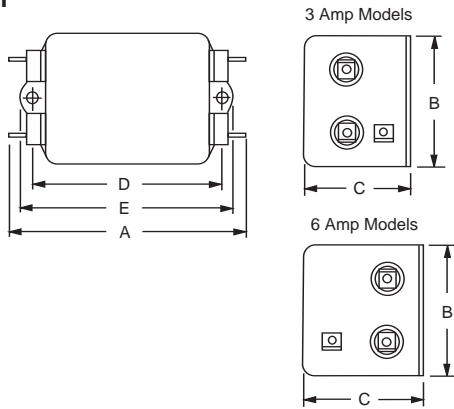
Line Cord No. GA400:

7 1/2 foot, 3-conductor line cord to mate with Q8 models.

HQ Series

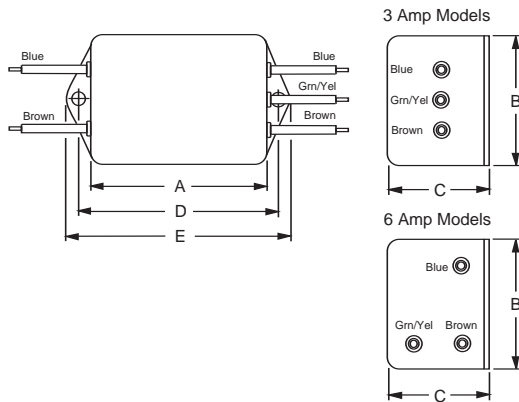
Case Styles

HQ1



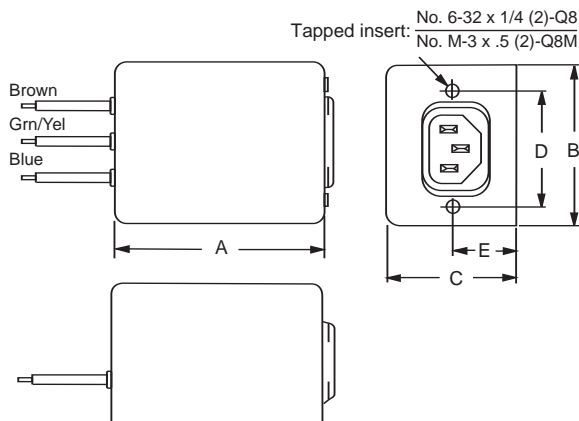
Typical dimensions:
Terminals: .250 [6.35] (5) Holes: .07 [1.8] Dia.(4) Slot: .07 x .16 [1.8 x 4.1]
Mounting holes: .188 [4.78] Dia. (2)

HQ3



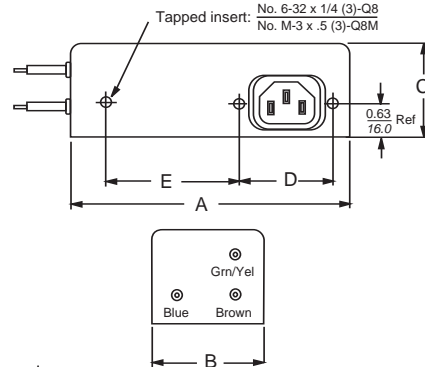
Typical dimensions:
Wire leads: 4.0 [101.6] Min. Mounting holes: .188 [4.78] Dia. (2)

3EHQ8 & 3EHQ8M (with metric insert)



Typical dimensions:
Wire leads: 6.0 [152.4] Min.

6EHQ8 & 6EHQ8M (with metric insert)



Typical dimensions:
Wire leads: 6.0 [152.4] Min.

Case Dimensions

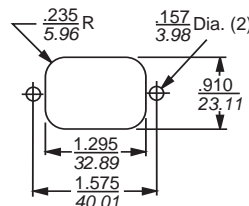
Part No.	A (max)	B (max)	C (max)	D $\pm .015$ $\pm .38$	E (max)
3EHQ1	3.85 97.8	2.07 52.6	1.78 45.2	2.938 74.63	3.34 84.8
3EHQ3	2.56 65.0	2.07 52.6	1.78 45.2	2.938 74.63	3.34 84.8
3EHQ8, 3EHQ8M	3.07 78.0	2.25 57.2	1.78 45.2	1.575 40.01	0.63 16.0 †
6EHQ1	4.98 126.5	2.27 57.7	1.8 45.7	4.063 103.2	4.47 113.5
6EHQ3	3.69 93.7	2.27 57.7	1.8 45.7	4.063 103.2	4.47 113.5
6EHQ8, 6EHQ8M	5.47 138.9	2.07 52.6	1.78 45.2	1.575 40.01	2.7 68.6 †

† $\pm .02$ [$\pm .5$]

Part Numbers

3EHQ1	6EHQ1
3EHQ3	6EHQ3
3EHQ8	6EHQ8
3EHQ8M	6EHQ8M
Line Cord No.	GA400

Recommended Panel Cutouts



Panel Cutout (back mount)

Tolerance $\pm .005$ [0.13]