

# Monolithic crystal filter

## MQF20.0-0300/01



### Application

- 2 pol filter
- i.f.- filter
- use in mobile and stationary transceivers

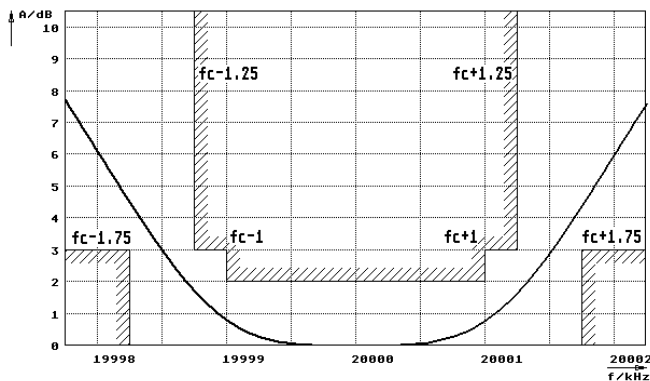
Limiting values		Unit	Value
Nominal frequency	$f_0$	MHz	20.0
Centre frequency	$f_c$	MHz	$20.0 \pm 300$ Hz
Insertion loss		dB	< 4.0
Pass band at 3.0dB		kHz	$f_c \pm 1.25 \dots 1.75$
Ripple in pass band	$f_c \pm 1$ kHz	dB	< 2.0
Stop band attenuation	$f_0 \pm 10$ kHz	dB	> 30
Alternate attenuation	$f_0 \pm 10 \dots 5000$ kHz	dB	> 30
Spurious response	$f_0 \pm 100 \dots 500$ kHz	dB	> 20

Terminating impedance Z			
R1  C1		Ohm/pF	200    2
R2  C2		Ohm/pF	200    2

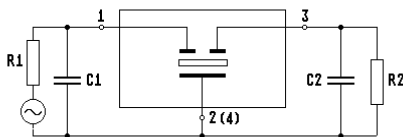
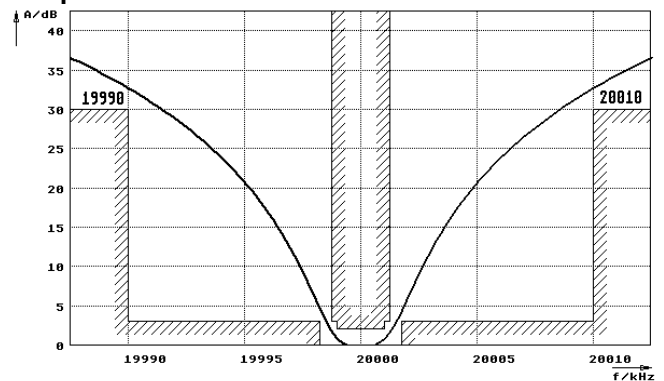
Operating temp. range	°C	-15... +65
Storage temp. range	°C	-45... +85
Environment conditions		according to CF001

### Characteristics MQF20.0-0300/01

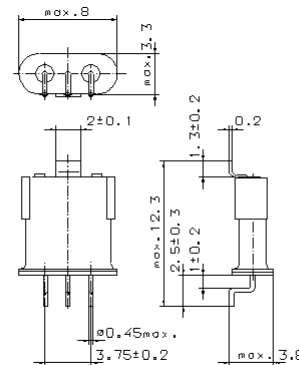
#### Pass band



#### Stop band



- Pin connections:
- 1 Input
  - 2 Ground
  - 3 Output
  - 4 Ground



GH9S1

RoHS compliant