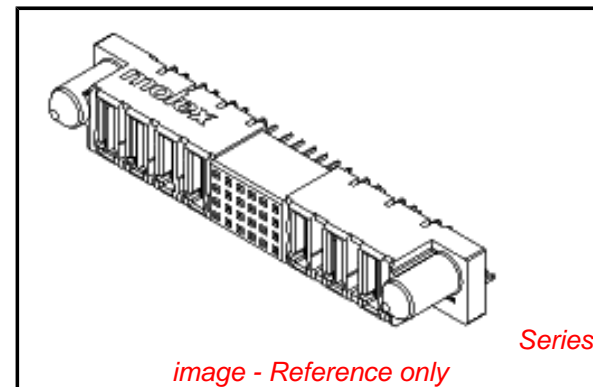


**PLEASE CHECK WWW.MOLEX.COM FOR LATEST PART INFORMATION**

**Part Number:** [0877342000](#)  
**Status:** **Active**  
**Overview:** [extreme powerplus ssi](#)  
**Description:** 6.35mm (.250") Pitch, Power, 2.54mm (.100") Pitch, Signal, EXTreme PowerPlus™ AC/DC Receptacle, P(A)DC-S-P(B)AC, Through Hole, Vertical, 0.76µm (30µ") Gold(Au) Selective Plating, 23 Circuits, Recessed Power Pins at all locations except B1, Lead-free

**Documents:**

[3D Model](#) [Product Specification PS-87663-006 \(PDF\)](#)  
[Drawing \(PDF\)](#) [RoHS Certificate of Compliance \(PDF\)](#)



**General**

Product Family	PCB Receptacles
Series	87734
Application	Board-to-Board
Comments	Recessed Power Circuit Positions: All except B1
Overview	<a href="#">extreme powerplus ssi</a>
Product Literature Order No	987650-3002
Product Name	EXTreme PowerPlus™

**Physical**

Circuits (Loaded)	23
Circuits Detail	Power Beta 3, Signal 12, Power Alpha 8
Color - Resin	Black
Glow-Wire Compliant	No
Guide to Mating Part	Yes
Lock to Mating Part	None
Material - Metal	Copper Alloy
Material - Plating Mating	Gold
Material - Plating Termination	Tin
Material - Resin	High Temperature Thermoplastic
Number of Rows	4
Orientation	Vertical
PCB Locator	No
PCB Retention	None
Packaging Type	Tray
Pitch - Mating Interface (in)	0.100 In, 0.250 In, 0.300 In
Pitch - Mating Interface (mm)	2.54 mm, 6.35 mm, 7.62 mm
Pitch - Term. Interface (in)	0.100 In, 0.125 In, 0.150 In, 0.200 In
Pitch - Term. Interface (mm)	2.54 mm, 3.18 mm, 3.81 mm, 5.08 mm
Plating min: Mating (µin)	30
Plating min: Mating (µm)	0.76
Plating min: Termination (µin)	100
Plating min: Termination (µm)	2.54
Polarized to Mating Part	Yes
Polarized to PCB	Yes
Stackable	No
Temperature Range - Operating	-20°C to +105°C
Termination Interface: Style	Through Hole

**Electrical**

Current - Maximum per Contact	2.5A, 30A, 50A
Voltage - Maximum	250V (RMS)

**Solder Process Data**

**EU RoHS**

**ELV and RoHS Compliant**  
**REACH SVHC**  
 Not Reviewed  
**Halogen-Free Status**  
 Not Reviewed

**China RoHS**



**Need more information on product environmental compliance?**

Email [productcompliance@molex.com](mailto:productcompliance@molex.com)  
 For a multiple part number RoHS Certificate of Compliance, [click here](#)

Please visit the [Contact Us](#) section for any non-product compliance questions.

**Search Parts in this Series**

87734Series

**Mates With**

87663 PCB Header

Duration at Max. Process Temperature (seconds)	10
Lead-free Process Capability	SMC & Wave Capable (TH only)
Max. Cycles at Max. Process Temperature	3
Process Temperature max. C	260

### **Material Info**

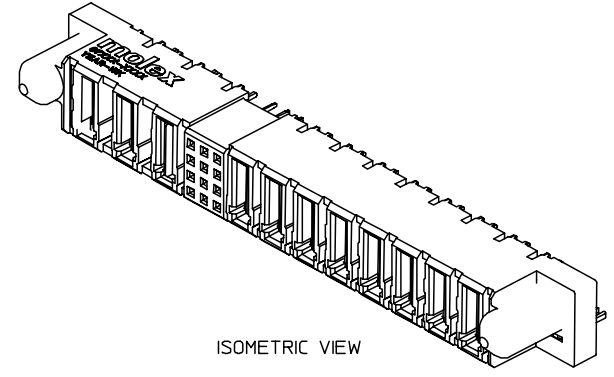
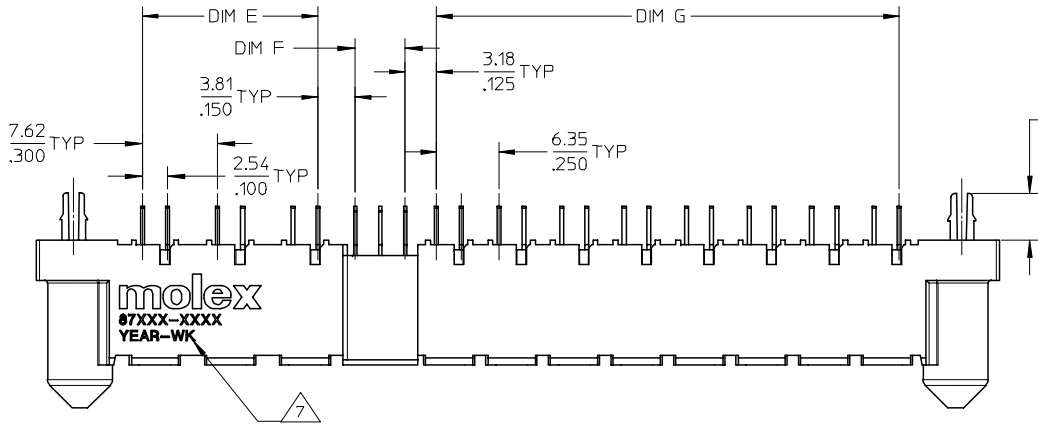
### **Reference - Drawing Numbers**

Application Specification	AS-87631-018
Product Specification	PS-87663-006
Sales Drawing	SD-87734-020

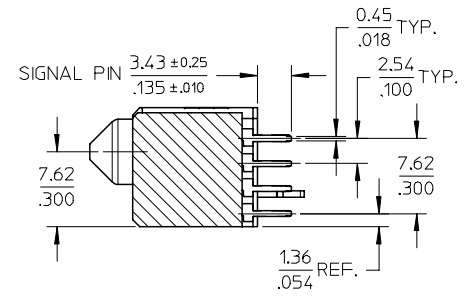
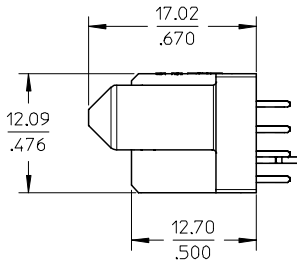
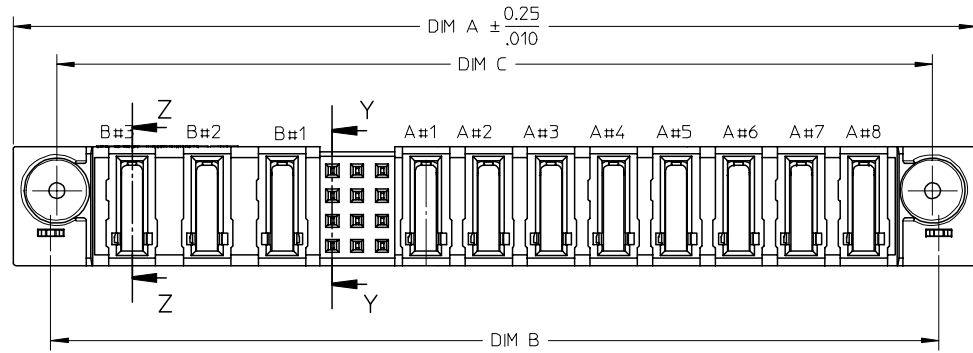
This document was generated on 05/22/2010

**PLEASE CHECK [WWW.MOLEX.COM](http://WWW.MOLEX.COM) FOR LATEST PART INFORMATION**

10 9 8 7 6 5 4 3 2 1

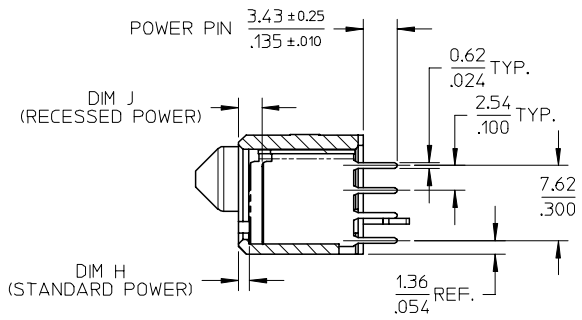


ISOMETRIC VIEW



SECTION Y-Y

POWER BETA AC      SIGNAL      POWER ALPHA DC



SECTION Z-Z

OBS TIN/LEAD P/N  
 EC NO: S2006-0791  
 DRWN:MLG 2006/03/30  
 CHKD:CGH 2006/03/30  
 APPR:PTL IM 2006/03/30

QUALITY SYMBOLS  
 ▽=0  
 ▽=0

GENERAL TOLERANCES (UNLESS SPECIFIED)	
4 PLACES	± --- ± ---
3 PLACES	± --- ± .005
2 PLACES	± 0.13 ± .010
1 PLACE	± 0.25 ± ---
ANGULAR ± 3 °	

DIMENSION STYLE	
MM/IN	
DRAWN BY	DATE
BHLOW	2004/02/18
CHECKED BY	DATE
KCL ING	2004/03/03
APPROVED BY	DATE
PTL IM	2004/03/15
MATERIAL NO.	SEE TABLE

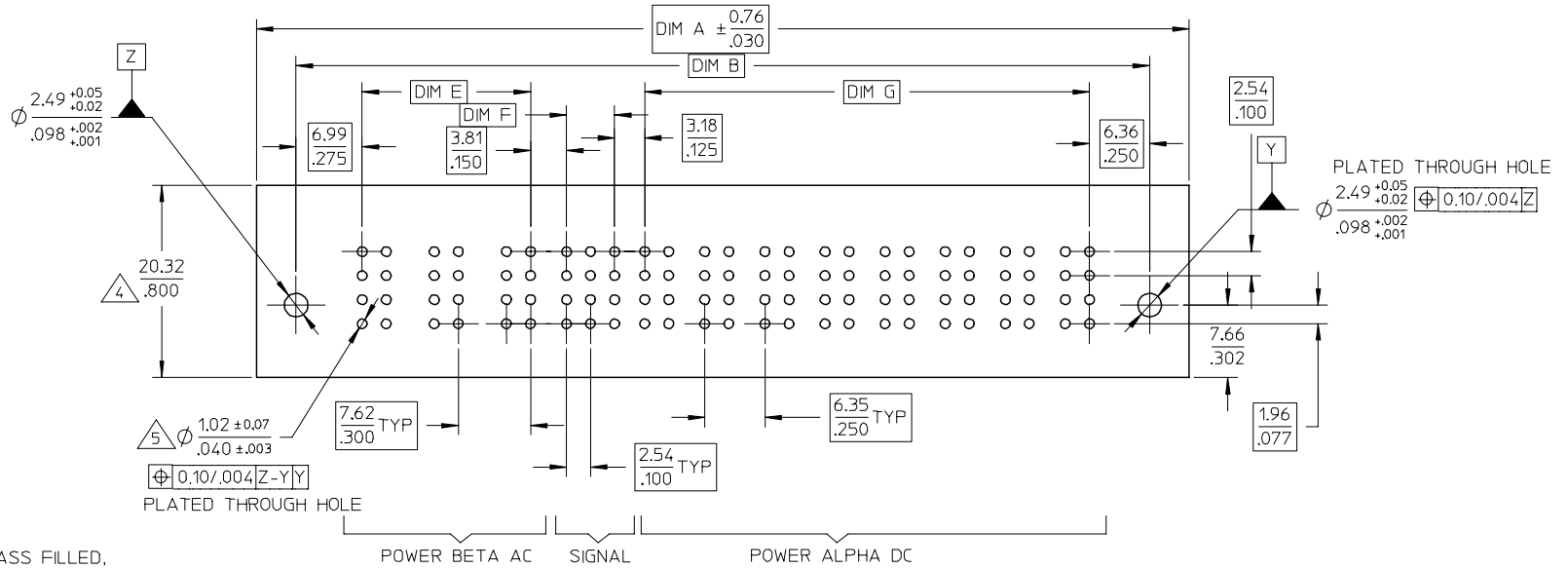
SCALE	DESIGN UNITS	THIRD ANGLE PROJECTION
NTS	METRIC	
TITLE		
DC/AC POWER RECEPTACLE P(A)DC-S-P(B)AC CONFIG. VERTICAL T/H, BOARD-LOCK		
MOLEX INCORPORATED		
DOCUMENT NO.	SHEET NO.	
SD-87734-020	1 OF 2	

DRAFT WHERE APPLICABLE  
 MUST REMAIN  
 WITHIN DIMENSIONS

THIS DRAWING CONTAINS INFORMATION THAT IS PROPRIETARY TO MOLEX INCORPORATED AND SHOULD NOT BE USED WITHOUT WRITTEN PERMISSION

9 8 7 6 5 4 3 2 1

PART NUMBER	P-S-P CONFIGURATION			RECESSED POWER CIRCUIT #	DIM A	DIM B	DIM C	DIM D	DIM E	DIM F	DIM G	DIM H STANDARD	DIM J RECESSED	BOARDLOCK OPITON	PACKAGING
	POWER BETA AC	SIGNAL	POWER ALPHA DC												
87734-2000	3	12	8	ALL EXCEPT B1.	97.79 3.850	90.17 3.550	88.90 3.500	74.30 2.925	17.78 .700	5.08 .200	46.99 1.850	1.07 .042	2.34 .092	NIL	TRAY
87734-2001	3	12	8	ALL EXCEPT B1.	97.79 3.850	90.17 3.550	88.90 3.500	74.30 2.925	17.78 .700	5.08 .200	46.99 1.850	1.07 .042	2.34 .092	YES	TRAY



**CONNECTOR - NOTES**

**1. MATERIALS :**

- HOUSING - LCP, GLASS FILLED, UL 94V-0, COLOR: BLACK.
- POWER PIN - COPPER ALLOY

**2. PLATING :**

- POWER CONTACTS
- 0.76 MICROMETER MINIMUM GOLD (Au) AT CONTACT AREA AND 2.54 MICROMETER MINIMUM TIN AT SOLDER TAIL AREA OVER 1.27um MIN. NICKEL (Ni) UNDERPLATE.

**3. PRODUCT SPECIFICATION: PS-87663-006.**

4. COMPONENT STAY AWAY ZONE FROM CONNECTOR.

5. PCB NOTE FOR DIAMETER 1.02/.040 PLATED HOLE.

- DRILLED HOLE SIZE IS 1.151/.0453
- PLATE WITH 0.007/.0003 MINIMUM TIN OVER 0.03/.001 TO 0.08/.003 COPPER PLATING TO ACHIEVE 1.02±0.08/.040±.003 HOLE. SEE SHEET 2 FOR RECOMMENDED PCB LAYOUT.

6. 4P(B)-24S-3P(A) CONFIGURATION IS SHOWN FOR ILLUSTRATION ONLY.

7. MANUFACTURER LOGO, PART NUMBER AND YEAR-WEEK CODE.

8. IMAGINARY LINE & DIMENSION TO POSITION AND PROVIDE CONNECTOR ORIENTATION W.R.T. TO PCB LAYOUT.

OBS TIN/LEAD P/N EC NO: S2006-0791 DRAWN: WLONG 2006/03/30 CHKD: CGOH 2006/03/30 APPR: PTLIM 2006/03/30	QUALITY SYMBOLS ▽=0 ▽C=0	GENERAL TOLERANCES (UNLESS SPECIFIED)		DIMENSION STYLE	SCALE	DESIGN UNITS	THIRD ANGLE PROJECTION	
				MM/IN	NTS	METRIC		
				DRAWN BY	DATE	TITLE		
				CHECKED BY	DATE	DC/AC POWER RECEPTACLE P(A)DC-S-P(B)AC CONFIG. VERTICAL T/H, BOARD-LOCK		
		ANGULAR ± 3°		APPROVED BY	DATE	MOLEX INCORPORATED		
		DRAFT WHERE APPLICABLE MUST REMAIN WITHIN DIMENSIONS		MATERIAL NO.	DOCUMENT NO.	SHEET NO.		
				SEE TABLE	SD-87734-020	2 OF 2		
				THIS DRAWING CONTAINS INFORMATION THAT IS PROPRIETARY TO MOLEX INCORPORATED AND SHOULD NOT BE USED WITHOUT WRITTEN PERMISSION				