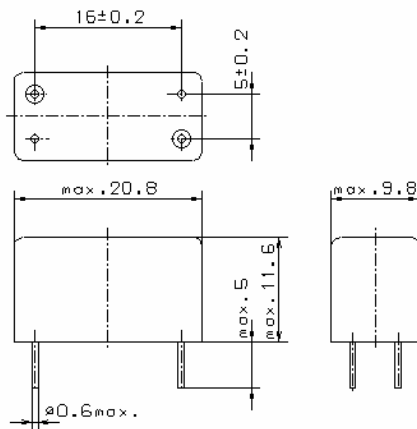
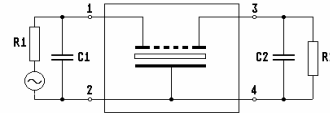


Specification for crystal filter:

**QF 70.0-8000/02**



GM 45



- |      |                              |                 |
|------|------------------------------|-----------------|
| 1.2. | Type name:                   | QF 70.0-8000/02 |
| 1.3. | Number of poles:             | 2               |
| 1.4. | Operating temperature range: | -40°C to +85°C  |
| 1.5. | Storage temperature range:   | -45°C to +85°C  |

**2. Electric values**

- |        |   |                                     |
|--------|---|-------------------------------------|
| 2.1.   | Nominal centre frequency fo:                          | 70.0 MHz                            |
| 2.2.   | <b>Pass band</b>                                      |                                     |
| 2.2.1. | Bandwidth between 3 dB - frequencies:                 | $> f_0 \pm 40$ kHz                  |
| 2.2.2. | Ripple in the range $f_0 \pm 40$ kHz:                 | Gaussian                            |
| 2.2.3. | Group delay at fo:                                    | $< 6 \mu\text{s}$                   |
| 2.3.4. | Group delay absolute at fo:                           | $4.5 \mu\text{s} \pm 1 \mu\text{s}$ |
| 2.3.5. | Group delay distortion in the range $f_0 \pm 40$ kHz: | $< 1 \mu\text{s}$                   |
| 2.2.6. | Insertion loss:                                       | $< 4$ dB                            |
|        | ( measured on smallest attenuation in pass band )     |                                     |
| 2.3.   | <b>Stop band</b>                                      |                                     |
| 2.3.1. | $f_0 \pm 400$ kHz                                     | $\geq 30$ dB                        |
| 2.3.2. | Alternate attenuation:                                | $\geq 40$ dB ( except spurious )    |
| 2.4.   | Terminating impedance ( input and output ):           | $50 \Omega // 0$ pF                 |
| 3.     | Marking on the case:                                  | firm, year week<br>QF 70.0-8000/02  |
| 4.     | Environment conditions:                               | Corresponding to Telefilter CF001   |

Edited by: \_\_\_\_\_ date: \_\_\_\_\_

Name: \_\_\_\_\_